

À des fins de recherche uniquement

Anticorps Polyclonal de lapin anti-MME,CD10



Numéro de catalogue: 23898-1-AP

2 Publications

Informations de base

Numéro de catalogue:

23898-1-AP

Taille:

150ul, Concentration: 800 µg/ml by Nanodrop and 447 µg/ml by Bradford method using BSA as the standard;

Hôte:

Lapin

Isotype:

IgG

Immunogen Catalog Number:

AG20963

Numéro d'acquisition GenBank:

BC101658

Identification du gène (NCBI):

4311

Nom complet:

membrane metallo-endopeptidase

MW calculé

750 aa, 86 kDa

MW observés:

90-110 kDa

Méthode de purification:

Purification par affinité contre l'antigène

Dilutions recommandées:

WB 1:500-1:2000

IHC 1:50-1:500

IF 1:50-1:500

Applications

Applications testées:

FC, IF, IHC, WB, ELISA

Demandes citées:

IF, WB

Spécificité de l'espèce:

Humain, rat, souris

Espèces citées:

Humain, souris

Remarque-IHC: il est suggéré de démasquer l'antigène avec un tampon de TE buffer pH 9,0; (*) A défaut, le démasquage de l'antigène peut être effectué avec un tampon citrate pH 6,0.

Contrôles positifs:

WB : tissu rénal de souris, tissu rénal de rat, tissu rénal humain

IHC : tissu rénal humain,

IF : tissu rénal de souris, cellules HepG2

Informations générales

MME is also names as neprilysin, CALLA, NEP, SFE, CD10 and belongs to the peptidase M13 family. It is a glycoprotein that is particularly abundant in kidney, where it is present on the brush border of proximal tubules and on glomerular epithelium. CD10 has been considered a useful marker in the diagnosis of renal carcinomas, because of its expression in clear cell and papillary renal cell carcinomas and its absence in chromophobe renal cell carcinomas (PMID:15286660).

Publications notables

Autrice	Pubmed ID	Journal	Application
Caiyun Li	34644519	Biochem Cell Biol	WB
Xintiu Zeng	29669342	Cell Physiol Biochem	IF

Stockage

Stockage:

Stocker à -20°C. Stable pendant un an après l'expédition.

Tampon de stockage:

PBS avec azoture de sodium à 0,02 % et glycérol à 50 % pH 7,3

L'aliquotage n'est pas nécessaire pour le stockage à -20C

*** Les 20ul contiennent 0,1% de BSA.

For technical support and original validation data for this product please contact:

T: 1 (888) 4PTGLAB (1-888-478-4522) (toll free in USA), or 1(312) 455-8498 (outside USA)

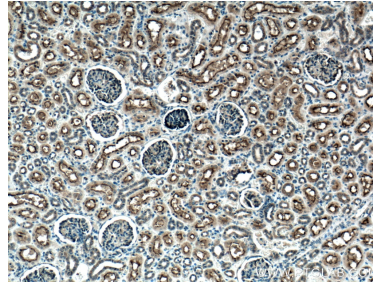
E: proteintech@ptglab.com
W: ptglab.com

This product is exclusively available under Proteintech Group brand and is not available to purchase from any other manufacturer.

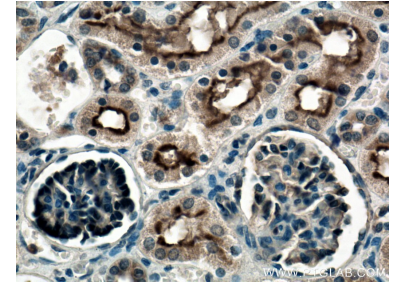
Données de validation sélectionnées



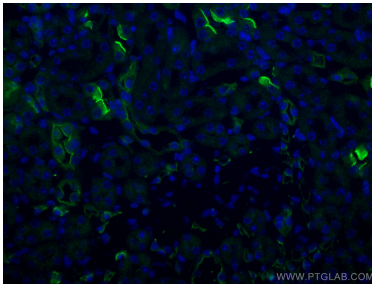
mouse kidney tissue were subjected to SDS PAGE followed by western blot with 23898-1-AP (MME,CD10 antibody) at dilution of 1:1000 incubated at room temperature for 1.5 hours.



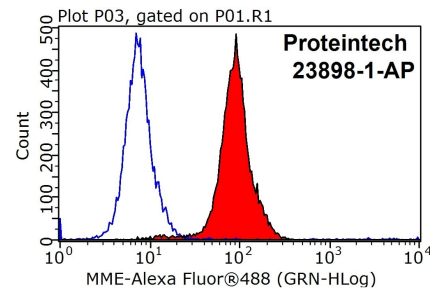
Immunohistochemical analysis of paraffin-embedded human kidney tissue slide using 23898-1-AP (MME,CD10 antibody) at dilution of 1:200 (under 10x lens. Heat mediated antigen retrieval with Tris-EDTA buffer (pH 9.0).



Immunohistochemical analysis of paraffin-embedded human kidney tissue slide using 23898-1-AP (MME,CD10 antibody) at dilution of 1:200 (under 40x lens. Heat mediated antigen retrieval with Tris-EDTA buffer (pH 9.0).



Immunofluorescent analysis of (4% PFA) fixed mouse kidney tissue using MME,CD10 antibody (23898-1-AP) at dilution of 1:200 and CoraLite@488-Conjugated AffiniPure Goat Anti-Rabbit IgG(H+L).



1x10⁶ HepG2 cells were stained with .2ug MME,CD10 antibody (23898-1-AP, red) and control antibody (blue). Fixed with 90% MeOH blocked with 3% BSA (30 min). Alexa Fluor 488-conjugated AffiniPure Goat Anti-Rabbit IgG(H+L) with dilution 1:1000.