

À des fins de recherche uniquement

Anticorps Polyclonal de lapin anti-CTGF



Numéro de catalogue: 23903-1-AP

6 Publications

Informations de base

Numéro de catalogue:

23903-1-AP

Taille:

150ul, Concentration: 193 µg/ml by Bradford method using BSA as the standard;

Hôte:

Lapin

Isotype:

IgG

Immunogen Catalog Number:

AG20985

Numéro d'acquisition GenBank:

BC087839

Identification du gène (NCBI):

1490

Nom complet:

connective tissue growth factor

MW calculé

349 aa, 38 kDa

Méthode de purification:

Purification par affinité contre l'antigène

Dilutions recommandées:

WB 1:500-1:2000

IP 0.5-4.0 ug for IP and 1:500-1:2000 for WB

IHC 1:20-1:200

Applications

Applications testées:

IHC, IP, WB, ELISA

Demandes citées:

IF, IHC, WB

Spécificité de l'espèce:

Humain

Espèces citées:

Humain, rat, souris

Remarque-IHC: il est suggéré de démasquer l'antigène avec un tampon de TE buffer pH 9,0; (*) À défaut, 'le démasquage de l'antigène peut être 'effectué avec un tampon citrate pH 6,0.

Contrôles positifs:

WB : tissu cardiaque de souris, tissu cérébral de souris, tissu rénal de souris

IP : tissu cérébral de souris,

IHC : tissu de cancer du côlon humain, tissu cardiaque humain, tissu de néphroblastome humain

Informations générales

CTGF, also known as CCN2, is a member of the CCN family of matricellular proteins. CTGF, a cysteine-rich, matrix-associated, heparin-binding protein, is widely expressed in various human tissues and organs. CTGF has important roles in many biological processes, including cell adhesion, migration, proliferation, angiogenesis, skeletal development, and tissue wound repair, and is critically involved in fibrotic disease and several forms of cancers. In western blotting, there are three different forms of CTGF reported: monomeric forms at approximately 36-38 kDa, homodimeric forms at approximately 70 kDa, and lower molecular mass fragment forms.

Publications notables

Autrice	Pubmed ID	Journal	Application
Kai Yang	27942222	Onco Targets Ther	WB
Xinliang Zou	35900670	J Cardiovasc Transl Res	WB,IHC
Shigehisa Aoki	30406776	Biomater Sci	WB,IHC

Stockage

Stockage:

Stocker à -20°C. Stable pendant un an après l'expédition.

Tampon de stockage:

PBS avec azoture de sodium à 0,02 % et glycérol à 50 % pH 7,3

L'aliquotage n'est pas nécessaire pour le stockage à -20C

*** Les 20ul contiennent 0,1% de BSA.

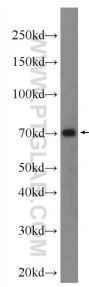
For technical support and original validation data for this product please contact:

T: 1 (888) 4PTGLAB (1-888-478-4522) (toll free in USA), or 1(312) 455-8498 (outside USA)

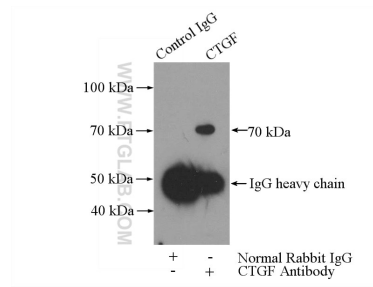
E: proteintech@ptglab.com
W: ptglab.com

This product is exclusively available under Proteintech Group brand and is not available to purchase from any other manufacturer.

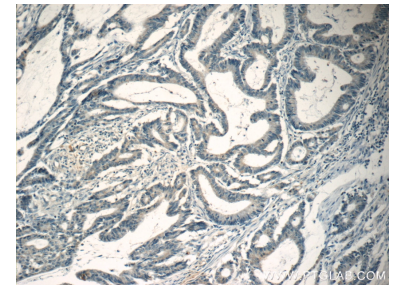
Données de validation sélectionnées



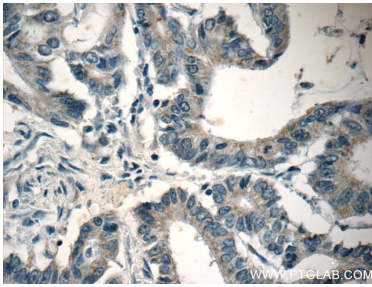
mouse heart tissue were subjected to SDS PAGE followed by western blot with 23903-1-AP (CTGF Antibody) at dilution of 1:1000 incubated at room temperature for 1.5 hours.



IP Result of anti-CTGF (IP:23903-1-AP, 5ug; Detection:23903-1-AP 1:1000) with mouse brain tissue lysate 2640ug.



Immunohistochemical analysis of paraffin-embedded human colon cancer tissue slide using 23903-1-AP (CTGF Antibody) at dilution of 1:50 (under 10x lens).



Immunohistochemical analysis of paraffin-embedded human colon cancer tissue slide using 23903-1-AP (CTGF Antibody) at dilution of 1:50 (under 40x lens).