

À des fins de recherche uniquement

Anticorps Polyclonal de lapin anti-AFAP1L1



Numéro de catalogue: 23909-1-AP

Informations de base

Numéro de catalogue: 23909-1-AP	Numéro d'acquisition GenBank: BC125093	Méthode de purification: Purifié par affinité contre l'antigène
Taille: 150ul , Concentration: 800 µg/ml by Nanodrop and 340 µg/ml by Bradford method using BSA as the standard;	Identification du gène (NCBI): 134265	Dilutions recommandées: WB 1:500-1:1000
Hôte: Lapin	Nom complet: actin filament associated protein 1-like 1	
Isotype: IgG	MW calculé: 768 aa, 86 kDa	
Immunogen Catalog Number: AG21006	MW observés: 75-86 kDa	

Applications

Applications testées: WB, ELISA	Contrôles positifs: WB : cellules COS-7,
Spécificité de l'espèce: Humain, singe	

Informations générales

Actin Filament-Associated Protein of 110 kDa (AFAP-110/AFAP1) is an adaptor protein with multiple protein binding motifs that is known to function as both an actin binding protein and a cSrc activating protein. A homology search of AFAP1 recently identified AFAP1L1 which has a similar sequence, domain structure and cellular localization. AFAP1L1 is highly expressed in human breast, colon and brain tissue. AFAP1L1 interacts with cortactin and involves the invadosomes formation. AFAP1L1 as a prognostic marker has a role in the progression of spindle cell sarcomas.

Stockage

Stockage:
Stocker à -20°C. Stable pendant un an après l'expédition.
Tampon de stockage:
PBS avec azoture de sodium à 0,02 % et glycérol à 50 % pH 7,3
L'aliquotage n'est pas nécessaire pour le stockage à -20C

*** Les 20ul contiennent 0,1% de BSA.

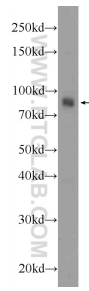
For technical support and original validation data for this product please contact:

T: 1 (888) 4PTGLAB (1-888-478-4522) (toll free in USA), or 1(312) 455-8498 (outside USA)

E: proteintech@ptglab.com
W: ptglab.com

This product is exclusively available under Proteintech Group brand and is not available to purchase from any other manufacturer.

Données de validation sélectionnées



COS-7 cells were subjected to SDS PAGE followed by western blot with 23909-1-AP (AFAP1L1 Antibody) at dilution of 1:600 incubated at room temperature for 1.5 hours.