

À des fins de recherche uniquement

# Anticorps Polyclonal de lapin anti-FAM158A



Numéro de catalogue: 23919-1-AP

## Informations de base

<b>Numéro de catalogue:</b> 23919-1-AP	<b>Numéro d'acquisition GenBank:</b> BC002491	<b>Méthode de purification:</b> Purifié par affinité contre l'antigène
<b>Taille:</b> 150ul , Concentration: 500 µg/ml by Nanodrop and 267 µg/ml by Bradford method using BSA as the standard;	<b>Identification du gène (NCBI):</b> 51016	<b>Dilutions recommandées:</b> WB 1:200-1:1000 IHC 1:20-1:200 IF 1:20-1:200
<b>Hôte:</b> Lapin	<b>Nom complet:</b> family with sequence similarity 158, member A	
<b>Isotype:</b> IgG	<b>MW calculé:</b> 208 aa, 23 kDa	
<b>Immunogen Catalog Number:</b> AG20744	<b>MW observés:</b> 23 kDa	

## Applications

<b>Applications testées:</b> IF, IHC, WB, ELISA	<b>Contrôles positifs:</b> WB : cellules HEK-293, IHC : tissu pancréatique humain, IF : cellules HEK-293,
<b>Spécificité de l'espèce:</b> Humain	
<b>Remarque-IHC: il est suggéré de démasquer l'antigène avec un tampon de TE buffer pH 9.0; (*) À défaut, le démasquage de l'antigène peut être effectué avec un tampon citrate pH 6,0.</b>	

## Informations générales

UPF0172 protein FAM158A, also known as c14orf122 or CGI112, is a protein that in humans is encoded by the FAM158A gene located on chromosome 14q11.2. Human FAM158A and its paralogs in other species are part of the uncharacterized protein family UPF0172 family, which is a subset of the JAB1/Mov34/MPN/PAD-1 ubiquitin protease protein family. The MPN superfamily contributes to ubiquitination and de-ubiquitination activity within the cell. The UPF0172 subset no longer has a functional ubiquitination domain and the function is uncharacterized. Fam158a is nearly ubiquitously expressed throughout the human body. The homolog in mice also shows expression throughout the entire body. Several micro-arrays demonstrate the variable expression of Fam158a in response to other factors and in various cancer types. None of this information gives any indication of a specific function but the wide expression of the gene and its high conservation indicate that Fam158a plays an important role in cellular function.

## Stockage

**Stockage:**  
Stocker à -20°C. Stable pendant un an après l'expédition.  
**Tampon de stockage:**  
PBS avec azoture de sodium à 0,02 % et glycérol à 50 % pH 7,3  
L'aliquoteage n'est pas nécessaire pour le stockage à -20C

\*\*\* Les 20ul contiennent 0,1% de BSA.

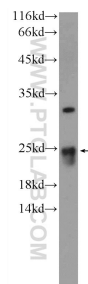
For technical support and original validation data for this product please contact:

T: 1 (888) 4PTGLAB (1-888-478-4522) (toll free in USA), or 1(312) 455-8498 (outside USA)

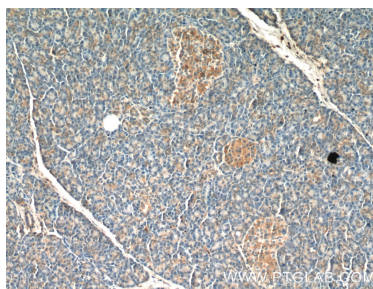
E: proteintech@ptglab.com  
W: ptglab.com

This product is exclusively available under Proteintech Group brand and is not available to purchase from any other manufacturer.

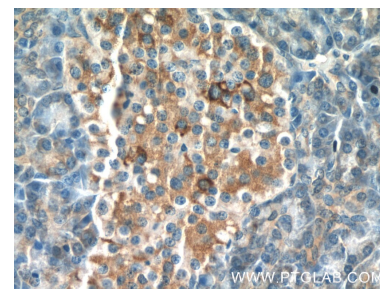
## Données de validation sélectionnées



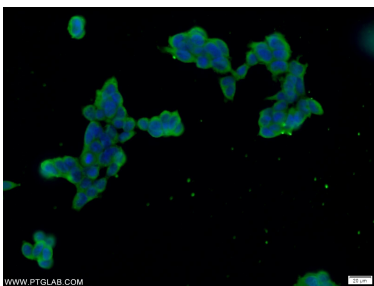
HEK-293 cells were subjected to SDS PAGE followed by western blot with 23919-1-AP (FAM158A Antibody) at dilution of 1:300 incubated at room temperature for 1.5 hours.



Immunohistochemical analysis of paraffin-embedded human pancreas tissue slide using 23919-1-AP (FAM158A Antibody) at dilution of 1:50 (under 10x lens).



Immunohistochemical analysis of paraffin-embedded human pancreas tissue slide using 23919-1-AP (FAM158A Antibody) at dilution of 1:50 (under 40x lens).



Immunofluorescent analysis of HEK-293 cells using 23919-1-AP (FAM158A antibody) at dilution of 1:50 and Alexa Fluor 488-conjugated AffiniPure Goat Anti-Rabbit IgG(H+L).