

À des fins de recherche uniquement

Anticorps Polyclonal de lapin anti-MAP4K1



Numéro de catalogue: 23950-1-AP

3 Publications

Informations de base

Numéro de catalogue: 23950-1-AP	Numéro d'acquisition GenBank: BC152994	Méthode de purification: Purifié par affinité contre l'antigène
Taille: 150ul , Concentration: 500 µg/ml by Nanodrop and 300 µg/ml by Bradford method using BSA as the standard;	Identification du gène (NCBI): 11184	Dilutions recommandées: WB 1:1000-1:8000 IP 0.5-4.0 ug for IP and 1:500-1:2000 for WB IHC 1:50-1:500
Hôte: Lapin	Nom complet: mitogen-activated protein kinase kinase kinase 1	
Isotype: IgG	MW calculé: 833 aa, 91 kDa	
Immunogen Catalog Number: AG20221	MW observés: 90 kDa	

Applications

Applications testées: IHC, IP, WB, ELISA	Contrôles positifs: WB : cellules Jurkat, cellules Raji IP : cellules Jurkat, IHC : tissu d'amygdalite humain, tissu hépatique humain
Demandes citées: WB	
Spécificité de l'espèce: Humain	
Espèces citées: Humain	

Remarque-IHC: il est suggéré de démasquer l'antigène avec un tampon de TE buffer pH 9,0; (*) A défaut, 'le démasquage de l'antigène peut être 'effectué avec un tampon citrate pH 6,0.

Informations générales

MAP4K1(Mitogen-activated protein kinase kinase kinase kinase 1) is also named as MEKKK 1, HPK1 and belongs to the protein kinase superfamily. It may function as a novel tumor suppressor and its loss plays a critical role in pancreatic cancer. MAP4K1 regulates stress responses, proliferation, and apoptosis in hematopoietic cells. This protein has 2 isoforms produced by alternative splicing.

Publications notables

Autrice	Pubmed ID	Journal	Application
Xunping Zhao	34530056	Cell Signal	WB
Li Zhou	37495569	Nat Commun	WB
Lin Yang	37106265	Clin Exp Med	WB

Stockage

Stockage:
Stocker à -20°C. Stable pendant un an après l'expédition.
Tampon de stockage:
PBS avec azoture de sodium à 0,02 % et glycérol à 50 % pH 7,3
L'aliquotage n'est pas nécessaire pour le stockage à -20C

*** Les 20ul contiennent 0,1% de BSA.

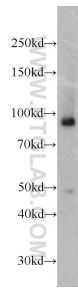
For technical support and original validation data for this product please contact:

T: 1 (888) 4PTGLAB (1-888-478-4522) (toll free in USA), or 1(312) 455-8498 (outside USA)

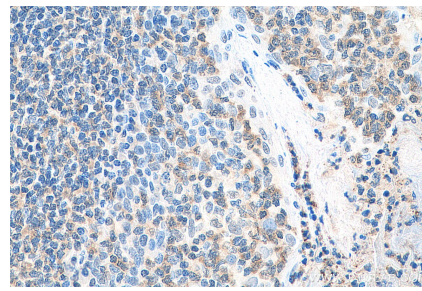
E: proteintech@ptglab.com
W: ptglab.com

This product is exclusively available under Proteintech Group brand and is not available to purchase from any other manufacturer.

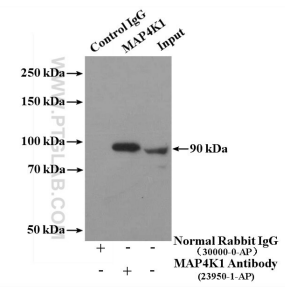
Données de validation sélectionnées



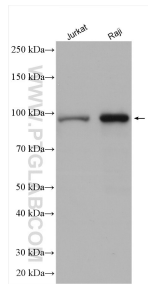
Raji cells were subjected to SDS PAGE followed by western blot with 23950-1-AP (MAP4K1 antibody) at dilution of 1:1000 incubated at room temperature for 1.5 hours.



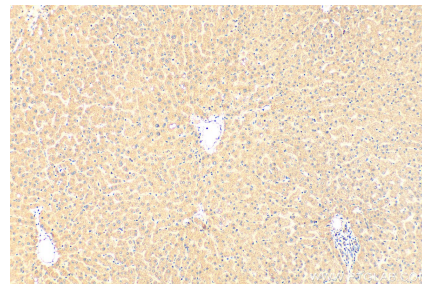
Immunohistochemical analysis of paraffin-embedded human tonsillitis tissue slide using 23950-1-AP (MAP4K1 antibody) at dilution of 1:200 (under 40x lens). Heat mediated antigen retrieval with Tris-EDTA buffer (pH 9.0).



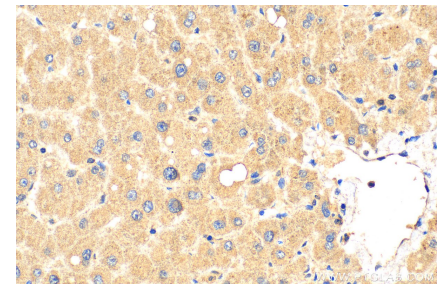
IP Result of anti-MAP4K1 (IP:23950-1-AP, 4ug; Detection:23950-1-AP 1:1000) with Jurkat cells lysate 3200ug.



Various lysates were subjected to SDS PAGE followed by western blot with 23950-1-AP (MAP4K1 antibody) at dilution of 1:4000 incubated at room temperature for 1.5 hours.



Immunohistochemical analysis of paraffin-embedded human liver tissue slide using 23950-1-AP (MAP4K1 antibody) at dilution of 1:200 (under 10x lens). Heat mediated antigen retrieval with Tris-EDTA buffer (pH 9.0).



Immunohistochemical analysis of paraffin-embedded human liver tissue slide using 23950-1-AP (MAP4K1 antibody) at dilution of 1:200 (under 40x lens). Heat mediated antigen retrieval with Tris-EDTA buffer (pH 9.0).