

À des fins de recherche uniquement

Anticorps Polyclonal de lapin anti-CLEC14A



Numéro de catalogue: 23964-1-AP

1 Publications

Informations de base

Numéro de catalogue:

23964-1-AP

Numéro d'acquisition GenBank:

BC031567

Méthode de purification:

Purifié par affinité contre l'antigène

Taille:

150ul, Concentration: 500 µg/ml by Nanodrop and 267 µg/ml by Bradford method using BSA as the standard;

Identification du gène (NCBI):

161198

Dilutions recommandées:

WB 1:500-1:2000

Hôte:

Lapin

Nom complet:

C-type lectin domain family 14, member A

MW calculé

490 aa, 52 kDa

Isotype:

IgG

MW observés:

52 kDa

Immunogen Catalog Number:

AG21081

Applications

Applications testées:

FC, WB, ELISA

Contrôles positifs:

WB : tissu cardiaque humain, tissu de muscle squelettique de souris

Demandes citées:

IHC, WB

Spécificité de l'espèce:

Humain, souris

Espèces citées:

Humain, souris

Informations générales

CLEC14A is a single-pass type I transmembrane protein whose extracellular domain consists of a C-type lectin-like domain (CTLD), a series of EGF-like domains, and a sushi-like domain (PMID: 23644659). CLEC14A is a member of the C-type lectin domain superfamily that also includes endosialin, thrombomodulin and CD93 (PMID: 16336259). It has been reported that CLEC14A is specifically expressed in endothelial cells and mediates cell to cell adhesion (PMID: 21095181). CLEC14A may be involved in tumor angiogenesis (PMID: 21706054; 23644659).

Publications notables

Autrice	Pubmed ID	Journal	Application
Zeyu Su	34107098	FASEB J	WB, IHC

Stockage

Stockage:

Stocker à -20°C. Stable pendant un an après l'expédition.

Tampon de stockage:

PBS avec azoture de sodium à 0,02 % et glycérol à 50 % pH 7,3

L'aliquotage n'est pas nécessaire pour le stockage à -20C

*** Les 20ul contiennent 0,1% de BSA.

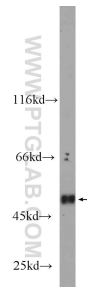
For technical support and original validation data for this product please contact:

T: 1 (888) 4PTGLAB (1-888-478-4522) (toll free in USA), or 1(312) 455-8498 (outside USA)

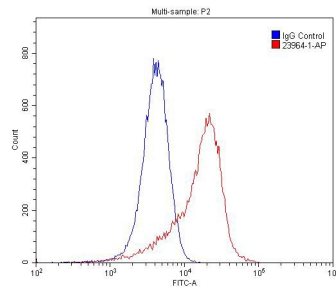
E: proteintech@ptglab.com
W: ptglab.com

This product is exclusively available under Proteintech Group brand and is not available to purchase from any other manufacturer.

Données de validation sélectionnées



human heart tissue were subjected to SDS PAGE followed by western blot with 23964-1-AP (CLEC14A antibody) at dilution of 1:1000 incubated at room temperature for 1.5 hours.



1×10^6 HUVEC cells were stained with 0.2ug CLEC14A antibody (23964-1-AP, red) and control antibody (blue). Fixed with 4% PFA blocked with 3% BSA (30 min). Alexa Fluor 488-conjugated AffiniPure Goat Anti-Rabbit IgG(H+L) with dilution 1:1500.