

À des fins de recherche uniquement

# Anticorps Polyclonal de lapin anti-Angiotensinogen



Numéro de catalogue: 23972-1-AP

1 Publications

## Informations de base

<b>Numéro de catalogue:</b> 23972-1-AP	<b>Numéro d'acquisition GenBank:</b> BC011519	<b>Méthode de purification:</b> Purifié par affinité contre l'antigène
<b>Taille:</b> 150ul , Concentration: 300 µg/ml by Nanodrop and 273 µg/ml by Bradford method using BSA as the standard;	<b>Identification du gène (NCBI):</b> 183	<b>Dilutions recommandées:</b> WB 1:500-1:2000 IHC 1:50-1:500 IF 1:10-1:100
<b>Hôte:</b> Lapin	<b>Nom complet:</b> angiotensinogen (serpin peptidase inhibitor, clade A, member 8)	
<b>Isotype:</b> IgG	<b>MW calculé:</b> 485 aa, 53 kDa	
<b>Immunogen Catalog Number:</b> AG21121	<b>MW observés:</b> 52 kDa	

## Applications

**Applications testées:**  
FC, IF, IHC, WB, ELISA

**Demandes citées:**  
IF

**Spécificité de l'espèce:**  
Humain

**Espèces citées:**  
souris

**Remarque-IHC: il est suggéré de démasquer l'antigène avec un tampon de TE buffer pH 9,0; (\*) A défaut, le démasquage de l'antigène peut être effectué avec un tampon citrate pH 6,0.**

**Contrôles positifs:**

WB : plasma humain,

IHC : tissu hépatique humain, tissu de cirrhose hépatique humain, tissu rénal humain

IF : cellules HepG2,

## Informations générales

Angiotensinogen is a precursor of angiotensin II (Ang II), is expressed and synthesized largely in the liver and is cleaved by the enzyme renin in response to lowered blood pressure. It has a key role in mediating vascular constriction and regulating salt and fluid homeostasis. The resulting product, angiotensin I, is then cleaved by angiotensin converting enzyme (ACE) to generate the physiologically active enzyme angiotensin II. Mutations in this gene are associated with susceptibility to essential hypertension, and can cause renal tubular dysgenesis, a severe disorder of renal tubular development. Defects in this gene have also been associated with non-familial structural atrial fibrillation, and inflammatory bowel disease.

## Publications notables

Autrice	Pubmed ID	Journal	Application
Wen Ding	29563333	JCI Insight	IF

## Stockage

**Stockage:**

Stocker à -20°C. Stable pendant un an après l'expédition.

**Tampon de stockage:**

PBS avec azoture de sodium à 0,02 % et glycérol à 50 % pH 7,3

L'aliquotage n'est pas nécessaire pour le stockage à -20C

\*\*\* Les 20ul contiennent 0,1% de BSA.

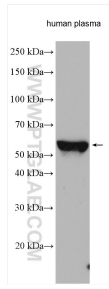
For technical support and original validation data for this product please contact:

T: 1 (888) 4PTGLAB (1-888-478-4522) (toll free in USA), or 1(312) 455-8498 (outside USA)

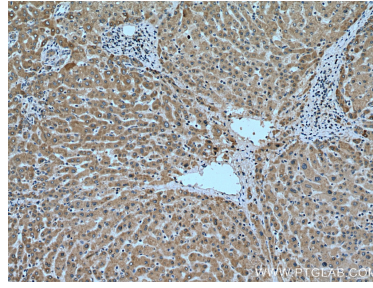
E: proteintech@ptglab.com  
W: ptglab.com

This product is exclusively available under Proteintech Group brand and is not available to purchase from any other manufacturer.

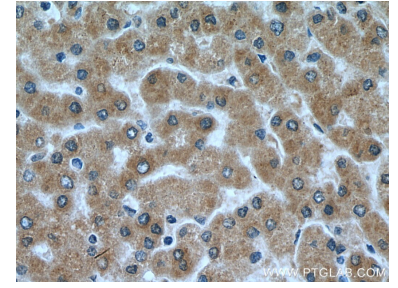
## Données de validation sélectionnées



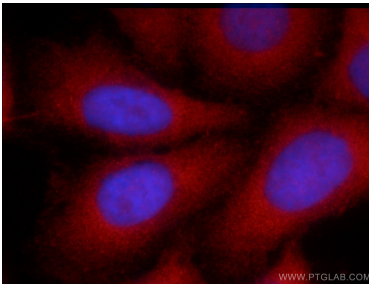
Human plasma were subjected to SDS PAGE followed by western blot with 23972-1-AP (Angiotensinogen antibody) at dilution of 1:1000 incubated at room temperature for 1.5 hours.



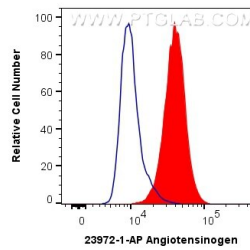
Immunohistochemical analysis of paraffin-embedded human liver tissue slide using 23972-1-AP (Angiotensinogen antibody) at dilution of 1:200 (under 10x lens). Heat mediated antigen retrieval with Tris-EDTA buffer (pH 9.0).



Immunohistochemical analysis of paraffin-embedded human liver tissue slide using 23972-1-AP (Angiotensinogen antibody) at dilution of 1:200 (under 40x lens). Heat mediated antigen retrieval with Tris-EDTA buffer (pH 9.0).



Immunofluorescent analysis of HepG2 cells using 23972-1-AP (Angiotensinogen antibody) at dilution of 1:25 and Rhodamine-Goat anti-Rabbit IgG.



1x10<sup>6</sup> HeLa cells were intracellularly stained with 0.4 ug Anti-Human Angiotensinogen (23972-1-AP) and CoraLite®488-Conjugated AffiniPure Goat Anti-Rabbit IgG(H+L) at dilution 1:1000 (red), or 0.4 ug Control Antibody. Cells were fixed with 4% PFA and permeabilized with Flow Cytometry Perm Buffer (PF00011-C).