

À des fins de recherche uniquement

Anticorps Polyclonal de lapin anti-TMEM55B



Numéro de catalogue: 23992-1-AP

Phare

5 Publications

Informations de base

Numéro de catalogue:

23992-1-AP

Taille:

150ul, Concentration: 700 µg/ml by Nanodrop;

Hôte:

Lapin

Isotype:

IgG

Immunogen Catalog Number:

AG21172

Numéro d'acquisition GenBank:

BC002867

Identification du gène (NCBI):

90809

Nom complet:

transmembrane protein 55B

MW calculé

277 aa, 29 kDa

MW observés:

29-32 kDa

Méthode de purification:

Purification par affinité contre l'antigène

Dilutions recommandées:

WB 1:2000-1:10000

IP 0.5-4.0 ug for IP and 1:500-1:1000 for WB

Applications

Applications testées:

IP, WB, ELISA

Demandes citées:

IP, WB

Spécificité de l'espèce:

Humain, rat, souris

Espèces citées:

Humain, rat, singe, souris

Contrôles positifs:

WB : cellules HeLa, cellules A549, cellules HepG2, cellules MCF-7, tissu cardiaque de rat, tissu cardiaque de souris

IP : cellules HeLa,

Informations générales

TMEM55B is also named as C14orf9 and PIP4P1. TMEM55B is originally identified as phosphatidylinositol-4,5-P2-4-phosphatases (PtdIns-4,5-P2-4-phosphatases) that catalyze dephosphorylation of PtdIns-4,5-P2 to PtdIns-5-P. The transmembrane protein TMEM55B is involved in the perinuclear clustering of lysosomes upon starvation. TMEM55B expression is upregulated upon starvation via TFEB and TFE3 activation, and loss of TMEM55B diminishes starvation-induced lysosomal clustering. TMEM55B can bind to the dynein adaptor JIP4, promoting dynein-dynactin-dependent lysosomal trafficking to the perinuclear region. TMEM55B is also suggested to contribute to lysosomal homeostasis and mTORC1 activation via the V-ATPase assembly (PMID: 33537719).

Publications notables

| Autrice | Pubmed ID | Journal | Application |
|-----------------|-----------|-------------------------------|-------------|
| Michiko Shirane | 32917905 | Nat Commun | WB |
| Yuan Yuan Qin | 32188273 | Arterioscler Thromb Vasc Biol | WB, IP |
| Jun Nakamura | 36649084 | JCI Insight | WB |

Stockage

Stockage:

Stocker à -20°C. Stable pendant un an après l'expédition.

Tampon de stockage:

PBS avec azoture de sodium à 0,02 % et glycérol à 50 % pH 7,3

L'aliquotage n'est pas nécessaire pour le stockage à -20C

*** Les 20ul contiennent 0,1% de BSA.

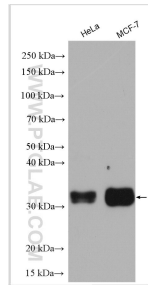
For technical support and original validation data for this product please contact:

T: 1 (888) 4PTGLAB (1-888-478-4522) (toll free in USA), or 1(312) 455-8498 (outside USA)

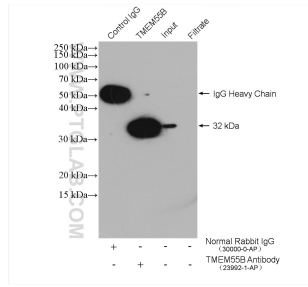
E: proteintech@ptglab.com
W: ptglab.com

This product is exclusively available under Proteintech Group brand and is not available to purchase from any other manufacturer.

Données de validation sélectionnées



Various lysates were subjected to SDS PAGE followed by western blot with 23992-1-AP (TMEM55B antibody) at dilution of 1:5000 incubated at room temperature for 1.5 hours.



IP result of anti-TMEM55B (IP:23992-1-AP, 4ug; Detection:23992-1-AP 1:500) with HeLa cells lysate 1600 ug.