

À des fins de recherche uniquement

Anticorps Polyclonal de lapin anti-TFAM



Numéro de catalogue: 23996-1-AP

5 Publications

Informations de base

Numéro de catalogue: 23996-1-AP	Numéro d'acquisition GenBank: BC126366	Méthode de purification: Purifié par affinité contre l'antigène
Taille: 150ul, Concentration: 400 µg/ml by Nanodrop and 353 µg/ml by Bradford method using BSA as the standard;	Identification du gène (NCBI): 7019	Dilutions recommandées: WB 1:1000-1:6000 IP 0.5-4.0 ug for IP and 1:500-1:2000 for WB IHC 1:50-1:500 IF 1:20-1:200
Hôte: Lapin	Nom complet: transcription factor A, mitochondrial	
Isotype: IgG	MW calculé: 246 aa, 29 kDa	
Immunogen Catalog Number: AG21196	MW observés: 25 kDa	

Applications

Applications testées:

IF, IHC, IP, WB, ELISA

Demandes citées:

IF, WB

Spécificité de l'espèce:

Humain

Espèces citées:

Humain

Contrôles positifs:

WB : cellules A431, cellules HeLa, cellules HL-60, cellules MCF-7

IP : cellules HeLa,

IHC : tissu rénal humain,

IF : cellules HepG2,

Remarque-IHC: il est suggéré de démasquer l'antigène avec un tampon de TE buffer pH 9,0; (*) A défaut, 'le démasquage de l'antigène peut être effectué avec un tampon citrate pH 6,0.

Informations générales

TFAM, also named as TCF6L2, MtTF1, TCF6, TCF6L1, TCF6L3 and mtTFA, is a mitochondrial transcription factor that is a key activator of mitochondrial transcription as well as a participant in mitochondrial genome replication. It is involved in mitochondrial transcription regulation. TFAM is required for accurate and efficient promoter recognition by the mitochondrial RNA polymerase. It activates transcription by binding immediately upstream of transcriptional start sites. TFAM is able to unwind and bend DNA.

Publications notables

Autrice	Pubmed ID	Journal	Application
Ying Shu	36314841	EMBO J	WB
Wenbin Hua	31666206	Biochim Biophys Acta Mol Basis Dis	WB
Jana Key	34943861	Cells	IF

Stockage

Stockage:

Stocker à -20°C. Stable pendant un an après l'expédition.

Tampon de stockage:

PBS avec azoture de sodium à 0,02 % et glycérol à 50 % pH 7,3

L'aliquotage n'est pas nécessaire pour le stockage à -20C

*** Les 20ul contiennent 0,1% de BSA.

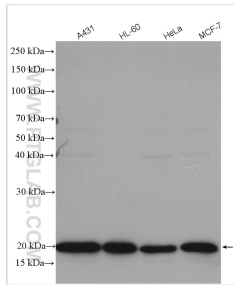
For technical support and original validation data for this product please contact:

T: 1 (888) 4PTGLAB (1-888-478-4522) (toll free in USA), or 1(312) 455-8498 (outside USA)

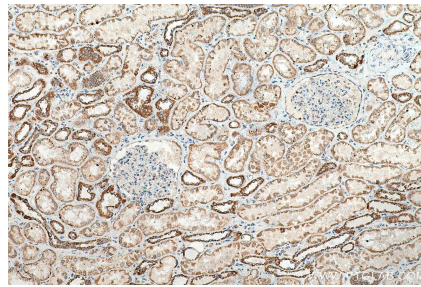
E: proteintech@ptglab.com
W: ptglab.com

This product is exclusively available under Proteintech Group brand and is not available to purchase from any other manufacturer.

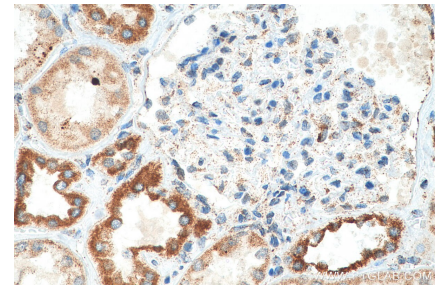
Données de validation sélectionnées



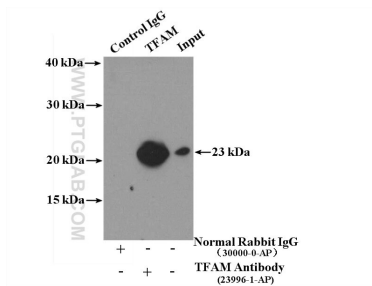
Various lysates were subjected to SDS PAGE followed by western blot with 23996-1-AP (TFAM antibody) at dilution of 1:3000 incubated at room temperature for 1.5 hours.



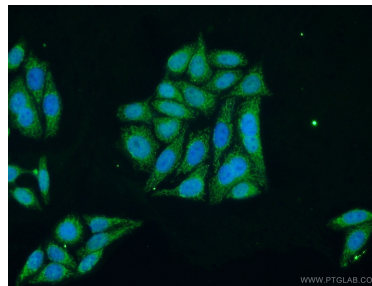
Immunohistochemical analysis of paraffin-embedded human kidney tissue slide using 23996-1-AP (TFAM antibody) at dilution of 1:200 (under 10x lens). Heat mediated antigen retrieval with Tris-EDTA buffer (pH 9.0).



Immunohistochemical analysis of paraffin-embedded human kidney tissue slide using 23996-1-AP (TFAM antibody) at dilution of 1:200 (under 40x lens). Heat mediated antigen retrieval with Tris-EDTA buffer (pH 9.0).



IP Result of anti-TFAM (IP:23996-1-AP, 4ug; Detection:23996-1-AP 1:1000) with HeLa cells lysate 2500ug.



Immunofluorescent analysis of HepG2 cells using 23996-1-AP (TFAM antibody) at dilution of 1:50 and Alexa Fluor 488-conjugated AffiniPure Goat Anti-Rabbit IgG(H+L).