

À des fins de recherche uniquement

Anticorps Polyclonal de lapin anti-CEP89



Numéro de catalogue: 24002-1-AP

3 Publications

Informations de base

Numéro de catalogue:

24002-1-AP

Taille:

150ul, Concentration: 220 µg/ml by Nanodrop and 220 µg/ml by Bradford method using BSA as the standard;

Hôte:

Lapin

Isotype:

IgG

Immunogen Catalog Number:

AG21206

Numéro d'acquisition GenBank:

BC136328

Identification du gène (NCBI):

84902

Nom complet:

coiled-coil domain containing 123

MW calculé

783 aa, 90 kDa

MW observés:

85 kDa, 40 kDa

Méthode de purification:

Purification par affinité contre l'antigène

Dilutions recommandées:

WB 1:200-1:1000

IF 1:50-1:500

Applications

Applications testées:

IF, WB, ELISA

Demandes citées:

IF, WB

Spécificité de l'espèce:

Humain, souris

Espèces citées:

Humain, souris

Contrôles positifs:

WB : cellules SH-SY5Y, cellules Neuro-2a

IF : cellules U-251,

Informations générales

CCDC123 (as known as CEP123), also named as CEP89, is a new player in the process of primary ciliogenesis and it also plays a role in mitochondrial metabolism where it may modulate complex IV activity. It has been shown that CEP123 is localized to the distal appendages of the mother centriole and the localization of CEP123 is cell cycle-dependent with its levels decreasing during mitosis. CEP123 depletion can cause defects in ciliary vesicle formation and prevent the formation of a ciliary vesicle at the distal end of the mother centriole. It is possible that CEP123 is involved in regulating the recruitment of membranes to the centrosome through its interaction with Cep290 (PMID:23575228, 23789104, 23348840). 24002-1-AP antibody recognizes all of CEP123 isoforms.

Publications notables

Auteur	Pubmed ID	Journal	Application
Pierrick Le Borgne	36070319	PLoS Biol	IF
Min Liu	34480124	Cell Res	WB, IF
Tomoharu Kanie	28625565	Dev Cell	IF

Stockage

Stockage:

Stocker à -20°C. Stable pendant un an après l'expédition.

Tampon de stockage:

PBS avec azoture de sodium à 0,02 % et glycérol à 50 % pH 7,3

L'aliquotage n'est pas nécessaire pour le stockage à -20°C

*** Les 20ul contiennent 0,1% de BSA.

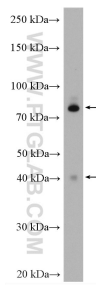
For technical support and original validation data for this product please contact:

T: 1 (888) 4PTGLAB (1-888-478-4522) (toll free in USA), or 1(312) 455-8498 (outside USA)

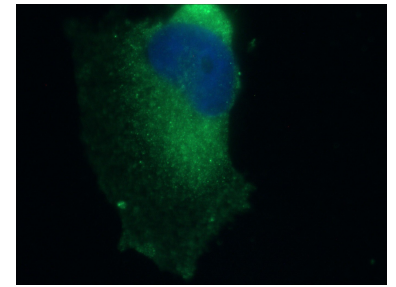
E: proteintech@ptglab.com
W: ptglab.com

This product is exclusively available under Proteintech Group brand and is not available to purchase from any other manufacturer.

Données de validation sélectionnées



Neuro-2a cells were subjected to SDS PAGE followed by western blot with 24002-1-AP (CEP89 antibody) at dilution of 1:300 incubated at room temperature for 1.5 hours.



Immunofluorescent analysis of (-20°C Ethanol) fixed U-251 cells using 24002-1-AP (CEP89 antibody) at dilution of 1:50 and Alexa Fluor 488-Conjugated AffiniPure Goat Anti-Rabbit IgG(H+L).

SH-SY5Y cells were subjected to SDS PAGE followed by western blot with 24002-1-AP (CEP89 antibody) at dilution of 1:300 incubated at room temperature for 1.5 hours.