

À des fins de recherche uniquement

Anticorps Polyclonal de lapin anti-FANCD2



Numéro de catalogue: 24006-1-AP

5 Publications

Informations de base

Numéro de catalogue:

24006-1-AP

Taille:

150ul , Concentration: 440 µg/ml by Bradford method using BSA as the standard;

Hôte:

Lapin

Isotype:

IgG

Numéro d'acquisition GenBank:

NM_033084

Identification du gène (NCBI):

2177

Nom complet:

Fanconi anemia, complementation group D2

MW calculé

166 kDa

MW observés:

150-155 kDa

Méthode de purification:

Purification par affinité contre l'antigène

Dilutions recommandées:

WB 1:200-1:1000

IP 0.5-4.0 ug for IP and 1:200-1:1000 for WB

IHC 1:20-1:200

Applications

Applications testées:

IHC, IP, WB, ELISA

Demandes citées:

IF, IHC, WB

Spécificité de l'espèce:

Humain, souris

Espèces citées:

Humain

Contrôles positifs:

WB : cellules HL-60,

IP : tissu testiculaire de souris,

IHC : tissu testiculaire humain,

Remarque-IHC: il est suggéré de démasquer l'antigène avec un tampon de TE buffer pH 9,0; (*) À défaut, le démasquage de l'antigène peut être effectué avec un tampon citrate pH 6,0.

Informations générales

FANCD2, also named as FACD and FACD2, is required for maintenance of chromosomal stability. FANCD2 promotes accurate and efficient pairing of homologs during meiosis. FANCD2 is involved in the repair of DNA double-strand breaks, both by homologous recombination and single-strand annealing. It may participate in S phase and G2 phase checkpoint activation upon DNA damage. It promotes BRCA2/FANCD1 loading onto damaged chromatin. FANCD2 may also be involved in B-cell immunoglobulin isotype switching. Defects in FANCD2 are a cause of Fanconi anemia (FA) which is a genetically heterogeneous, autosomal recessive disorder characterized by progressive pancytopenia, a diverse assortment of congenital malformations, and a predisposition to the development of malignancies. The antibody recognize both un-phospho and phospho-Ser(330) of FANCD2.

Publications notables

Autrice	Pubmed ID	Journal	Application
Yusuke Oku	29928579	FEBS Open Bio	WB
Huikai Miao	35236309	BMC Cancer	IHC
Anna Palovcak	37620397	Commun Biol	WB

Stockage

Stockage:

Stocker à -20°C. Stable pendant un an après l'expédition.

Tampon de stockage:

PBS avec azoture de sodium à 0,02 % et glycérol à 50 % pH 7,3

L'aliquote n'est pas nécessaire pour le stockage à -20C

*** Les 20ul contiennent 0,1% de BSA.

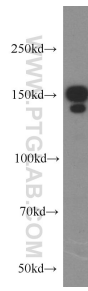
For technical support and original validation data for this product please contact:

T: 1 (888) 4PTGLAB (1-888-478-4522) (toll free in USA), or 1(312) 455-8498 (outside USA)

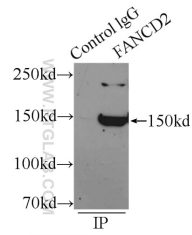
E: proteintech@ptglab.com
W: ptglab.com

This product is exclusively available under Proteintech Group brand and is not available to purchase from any other manufacturer.

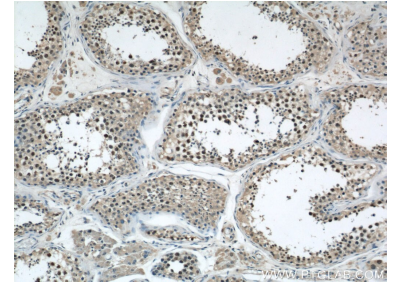
Données de validation sélectionnées



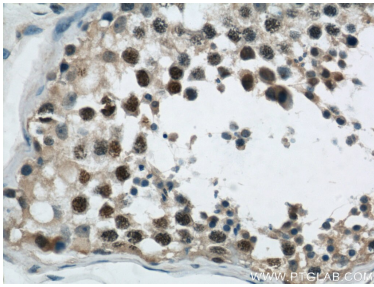
HL-60 cells were subjected to SDS PAGE followed by western blot with 24006-1-AP (FANCD2 antibody) at dilution of 1:300 incubated at room temperature for 1.5 hours.



IP Result of anti-FANCD2 (IP:24006-1-AP, 4ug; Detection:24006-1-AP 1:300) with mouse testis tissue lysate 6000ug.



Immunohistochemical analysis of paraffin-embedded human testis using 24006-1-AP (FANCD2 antibody) at dilution of 1:50 (under 10x lens).



Immunohistochemical analysis of paraffin-embedded human testis using 24006-1-AP (FANCD2 antibody) at dilution of 1:50 (under 40x lens).