

À des fins de recherche uniquement

# Anticorps Polyclonal de lapin anti-LIN28B



Numéro de catalogue: 24017-1-AP

3 Publications

## Informations de base

Numéro de catalogue:

24017-1-AP

Numéro d'acquisition GenBank:

BC137526

Méthode de purification:

Purification par affinité contre l'antigène

Taille:

150ul, Concentration: 173 µg/ml by Nanodrop and 173 µg/ml by Bradford method using BSA as the standard;

Identification du gène (NCBI):

389421

Dilutions recommandées:

WB 1:500-1:3000  
IP 0.5-4.0 ug for IP and 1:500-1:1000 for WB  
IF 1:200-1:800

Hôte:

Lapin

Nom complet:

lin-28 homolog B (C. elegans)

MW calculé

250 aa, 27 kDa

Isotype:

IgG

MW observés:

35 kDa

Immunogen Catalog Number:

AG21241

## Applications

Applications testées:

IF, IP, WB, ELISA

Contrôles positifs:

WB : cellules HEK-293, cellules HepG2, cellules K-562

Demandes citées:

IHC, IP, PLA, WB

IP : cellules HEK-293,

Spécificité de l'espèce:

Humain, souris

IF : cellules NCCIT,

Espèces citées:

Humain, souris

## Informations générales

LIN28B, also named as CSDD2, belongs to the lin-28 family. It acts as a suppressor of microRNA (miRNA) biogenesis by specifically binding the precursor let-7 (pre-let-7). LIN28B is specifically expressed in embryonic muscle, neurons, and epithelia, as well as in embryonic carcinoma cells. However, it is suppressed in most adult tissues except for skeletal and cardiac muscle. The calculated molecular weight of LIN28B is 27 kDa, but a 35 kDa band has been detected in some articles (PMID: 33029224, 33378003).

## Publications notables

Autrice	Pubmed ID	Journal	Application
Nam-Kyung Yu	34816099	iScience	WB, PLA
Xi Zhao	35148224	Pharm Biol	WB
Qian Hu	25197381	Int J Clin Exp Pathol	IP, IHC

## Stockage

Stockage:

Stocker à -20°C. Stable pendant un an après l'expédition.

Tampon de stockage:

PBS avec azoture de sodium à 0,02 % et glycérol à 50 % pH 7,3

L'aliquotage n'est pas nécessaire pour le stockage à -20C

\*\*\* Les 20ul contiennent 0,1% de BSA.

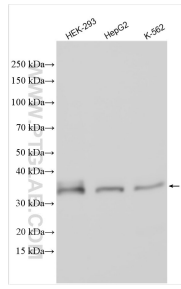
For technical support and original validation data for this product please contact:

T: 1 (888) 4PTGLAB (1-888-478-4522) (toll free in USA), or 1(312) 455-8498 (outside USA)

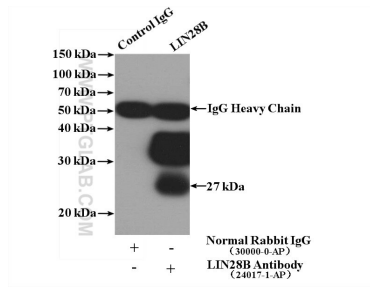
E: proteintech@ptglab.com  
W: ptglab.com

This product is exclusively available under Proteintech Group brand and is not available to purchase from any other manufacturer.

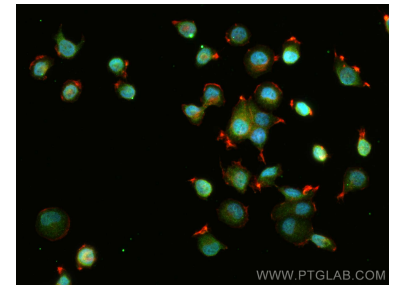
## Données de validation sélectionnées



Various lysates were subjected to SDS PAGE followed by western blot with 24017-1-AP (LIN28B antibody) at dilution of 1:1500 incubated at room temperature for 1.5 hours.



IP Result of anti-LIN28B (IP:24017-1-AP, 4ug; Detection:24017-1-AP 1:500) with HEK-293 cells lysate 1480ug.



Immunofluorescent analysis of (4% PFA) fixed NCCIT cells using LIN28B antibody (24017-1-AP) at dilution of 1:400 and CoraLite®488-Conjugated AffiniPure Goat Anti-Rabbit IgG(H+L), CL594-Phalloidin (red).