

À des fins de recherche uniquement

Anticorps Polyclonal de lapin anti-CXorf56



Numéro de catalogue: 24021-1-AP

3 Publications

Informations de base

Numéro de catalogue: 24021-1-AP	Numéro d'acquisition GenBank: BC023506	Méthode de purification: Purifié par affinité contre l'antigène
Taille: 150ul , Concentration: 600 µg/ml by Nanodrop and 280 µg/ml by Bradford method using BSA as the standard;	Identification du gène (NCBI): 63932	Dilutions recommandées: WB 1:500-1:2000 IP 0.5-4.0 ug for IP and 1:500-1:2000
Hôte: Lapin	Nom complet: chromosome X open reading frame 56	for WB IF 1:20-1:200
Isotype: IgG	MW calculé 222 aa, 26 kDa	
Immunogen Catalog Number: AG19856	MW observés: 26-30 kDa	

Applications

Applications testées:

IF, IP, WB, ELISA

Demandes citées:

IP, WB

Spécificité de l'espèce:

Humain, souris

Espèces citées:

Humain, singe

Contrôles positifs:

WB : cellules HeLa, cellules HEK-293, tissu rénal de souris

IP : tissu rénal de souris,

IF : cellules HeLa,

Informations générales

CxORF56 (also known as STEEP) is an evolutionarily highly conserved protein whose function is unknown. Recently CxORF56 has been identified as a protein that interacts with STING, and it is essential for STING ER exit. CxORF56-dependent STING ER exit is essential for STING signaling in antiviral defense and in inflammatory diseases.

Publications notables

Autrice	Pubmed ID	Journal	Application
Thaneas Prabakaran	33813142	EBioMedicine	WB
Ying Zhu	37156759	NPJ Breast Cancer	WB, IP
Feifei Diao	37039642	J Virol	WB

Stockage

Stockage:

Stocker à -20°C. Stable pendant un an après l'expédition.

Tampon de stockage:

PBS avec azoture de sodium à 0,02 % et glycérol à 50 % pH 7,3

L'aliquotage n'est pas nécessaire pour le stockage à -20C

*** Les 20ul contiennent 0,1% de BSA.

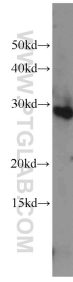
For technical support and original validation data for this product please contact:

T: 1 (888) 4PTGLAB (1-888-478-4522) (toll free in USA), or 1(312) 455-8498 (outside USA)

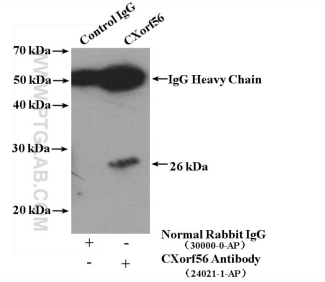
E: proteintech@ptglab.com
W: ptglab.com

This product is exclusively available under Proteintech Group brand and is not available to purchase from any other manufacturer.

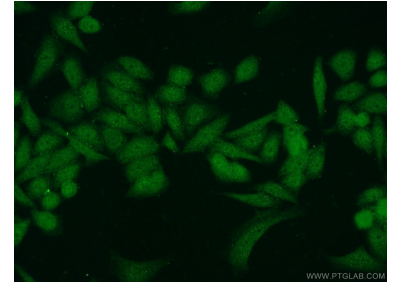
Données de validation sélectionnées



HeLa cells were subjected to SDS PAGE followed by western blot with 24021-1-AP (CXorf56 antibody) at dilution of 1:1000 incubated at room temperature for 1.5 hours.



IP Result of anti-CXorf56 (IP:24021-1-AP, 4ug; Detection:24021-1-AP 1:1000) with mouse kidney tissue lysate 8000ug.



Immunofluorescent analysis of HeLa cells using 24021-1-AP (CXorf56 antibody) at dilution of 1:50 and Alexa Fluor 488-conjugated AffiniPure Goat Anti-Rabbit IgG(H+L).