

À des fins de recherche uniquement

Anticorps Polyclonal de lapin anti-Glucocorticoid receptor



Numéro de catalogue: 24050-1-AP

Phare

75 Publications

Informations de base

Numéro de catalogue:

24050-1-AP

Taille:

150ul, Concentration: 850 µg/ml by Nanodrop;

Hôte:

Lapin

Isotype:

IgG

Immunogen Catalog Number:

AG21146

Numéro d'acquisition GenBank:

BC015610

Identification du gène (NCBI):

2908

Nom complet:

nuclear receptor subfamily 3, group C, member 1 (glucocorticoid receptor)

MW calculé

86 kDa

MW observés:

94-97 kDa

Méthode de purification:

Purification par affinité contre l'antigène

Dilutions recommandées:

WB 1:5000-1:50000

IP 0.5-4.0 µg for IP and 1:1000-1:8000 for WB

IHC 1:50-1:500

IF 1:50-1:500

Applications

Applications testées:

IF, IHC, IP, WB, ELISA

Demandes citées:

ChIP, CoIP, IF, IHC, IP, WB

Spécificité de l'espèce:

Humain, rat, souris

Espèces citées:

Humain, rat, souris

Remarque-IHC: il est suggéré de démasquer l'antigène avec un tampon de TE buffer pH 9,0; (*) À défaut, le démasquage de l'antigène peut être effectué avec un tampon citrate pH 6,0.

Contrôles positifs:

WB : cellules HEK-293, cellules DU 145, cellules HeLa, cellules HepG2, cellules PC-12, tissu cérébral de rat, tissu cérébral de souris

IP : cellules HepG2, tissu cardiaque de souris

IHC : tissu de cancer de la prostate humain, tissu de tumeur ovarienne humain

IF : cellules HepG2,

Informations générales

Glucocorticoid receptor (GR, or GCR) also known as NR3C1 (nuclear receptor subfamily 3, group C, member 1) is a receptor for glucocorticoids, which owns a dual mode of action: as a transcription factor that binds to glucocorticoid response elements (GRE) and as a modulator of other transcription factors. It is involved in cell proliferation and differentiation and specifically implicated in newborn birth weight, thus providing a biological mechanism by which NR3C1 expression may influence birth weight (PMID:22810058).

Publications notables

Autrice	Pubmed ID	Journal	Application
Yixuan Wang	36165414	Br J Pharmacol	WB,IF,CoIP
Sheng Hu	36038029	Neurosci Lett	WB
Mehdi Boutagouga Boudjadja	36182699	Curr Biol	IF

Stockage

Stockage:

Stocker à -20°C. Stable pendant un an après l'expédition.

Tampon de stockage:

PBS avec azoture de sodium à 0,02 % et glycérol à 50 % pH 7,3

L'aliquotage n'est pas nécessaire pour le stockage à -20C

*** Les 20ul contiennent 0,1% de BSA.

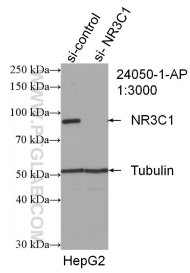
For technical support and original validation data for this product please contact:

T: 1 (888) 4PTGLAB (1-888-478-4522) (toll free in USA), or 1(312) 455-8498 (outside USA)

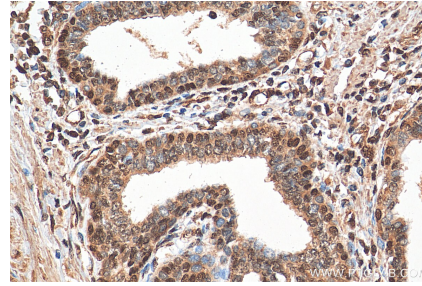
E: proteintech@ptglab.com
W: ptglab.com

This product is exclusively available under Proteintech Group brand and is not available to purchase from any other manufacturer.

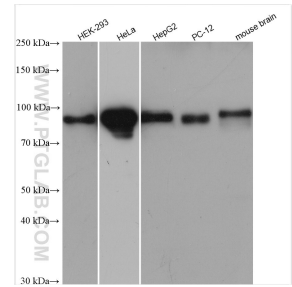
Données de validation sélectionnées



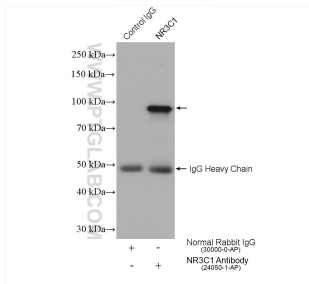
WB result of Glucocorticoid receptor antibody (24050-1-AP; 1:3000; incubated at room temperature for 1.5 hours) with sh-Control and sh-Glucocorticoid receptor transfected HepG2 cells.



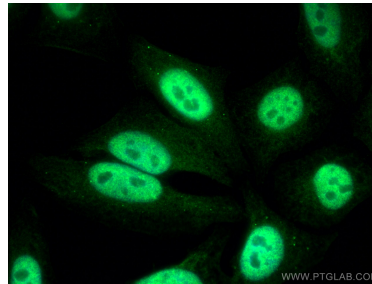
Immunohistochemical analysis of paraffin-embedded human prostate cancer tissue slide using 24050-1-AP (Glucocorticoid receptor antibody) at dilution of 1:200 (under 40x lens). Heat mediated antigen retrieval with Tris-EDTA buffer (pH 9.0).



Various lysates were subjected to SDS PAGE followed by western blot with 24050-1-AP (Glucocorticoid receptor antibody) at dilution of 1:10000 incubated at room temperature for 1.5 hours.



IP result of anti-Glucocorticoid receptor (IP: 24050-1-AP, 4ug; Detection: 24050-1-AP 1:4000) with HepG2 cells lysate 1720 ug.



Immunofluorescent analysis of (4% PFA) fixed HepG2 cells using Glucocorticoid receptor antibody (24050-1-AP) at dilution of 1:200 and CoraLite® 488-Conjugated AffiniPure Goat Anti-Rabbit IgG(H+L).