

À des fins de recherche uniquement

Anticorps Polyclonal de lapin anti-Matrilin 2



Numéro de catalogue: 24064-1-AP

2 Publications

Informations de base

Numéro de catalogue:

24064-1-AP

Taille:

150ul , Concentration: 500 µg/ml by Nanodrop and 327 µg/ml by Bradford method using BSA as the standard;

Hôte:

Lapin

Isotype:

IgG

Immunogen Catalog Number:

AG21113

Numéro d'acquisition GenBank:

BC010444

Identification du gène (NCBI):

4147

Nom complet:

matrilin 2

MW calculé

107 kDa

MW observés:

120-150 kDa

Méthode de purification:

Purifié par affinité contre l'antigène

Dilutions recommandées:

WB 1:500-1:1000

Applications

Applications testées:

WB, ELISA

Demandes citées:

IF, WB

Spécificité de l'espèce:

Humain, souris

Espèces citées:

poisson-zèbre, souris

Contrôles positifs:

WB : cellules NIH/3T3, cellules HEK-293, tissu hépatique de souris

Informations générales

The matrilins represent a new family of oligomeric non-collagenous extracellular matrix proteins that are assumed to act as adapter molecules connecting other proteins and proteoglycans in the extracellular matrix (PMID: 17513098). Four matrilins (matrilin-1, -2, -3, and -4) have been identified. They all share a structure made up of von Willebrand factor A domains, EGF-like domains and a coiled-coil alpha-helical module (PMID: 18386166). Matrilin-1 and matrilin-3 are expressed mainly in cartilage, while matrilin-2 and matrilin-4 show broader tissue distribution. Matrilin-2 is the largest member of the family. It incorporates into loose and dense connective tissue and becomes associated with some basement membranes (PMID: 17513098).

Publications notables

Autrice	Pubmed ID	Journal	Application
Ranjay Jayadev	35584218	Sci Adv	WB
Li-Fong Seet	35583819	J Mol Med (Berl)	WB, IF

Stockage

Stockage:

Stocker à -20°C. Stable pendant un an après l'expédition.

Tampon de stockage:

PBS avec azoture de sodium à 0,02 % et glycérol à 50 % pH 7,3

L'aliquotage n'est pas nécessaire pour le stockage à -20C

*** Les 20ul contiennent 0,1% de BSA.

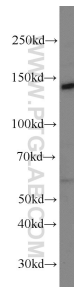
For technical support and original validation data for this product please contact:

T: 1 (888) 4PTGLAB (1-888-478-4522) (toll free in USA), or 1(312) 455-8498 (outside USA)

E: proteintech@ptglab.com
W: ptglab.com

This product is exclusively available under Proteintech Group brand and is not available to purchase from any other manufacturer.

Données de validation sélectionnées



NIH/3T3 cells were subjected to SDS PAGE followed by western blot with 24064-1-AP (Matrilin 2 antibody) at dilution of 1:800 incubated at room temperature for 1.5 hours.