

À des fins de recherche uniquement

Anticorps Polyclonal de lapin anti-SLC36A4



Numéro de catalogue: 24066-1-AP

Informations de base

Numéro de catalogue: 24066-1-AP	Numéro d'acquisition GenBank: BC047374	Méthode de purification: Purifié par affinité contre l'antigène
Taille: 150ul , Concentration: 200 µg/ml by Nanodrop and 180 µg/ml by Bradford method using BSA as the standard;	Identification du gène (NCBI): 120103	Dilutions recommandées: WB 1:500-1:2000
Hôte: Lapin	Nom complet: solute carrier family 36 (proton/amino acid symporter), member 4	
Isotype: IgG	MW calculé 504 aa, 56 kDa	
Immunogen Catalog Number: AG21142	MW observés: 41-66 kDa	

Applications

Applications testées: WB, ELISA	Contrôles positifs: WB : cellules A549, cellules HEK-293, cellules PC-3
Spécificité de l'espèce: Humain	

Informations générales

SLC36A4 (also known as proton-coupled amino-acid transporter 4, PAT4), is a member of the solute carrier (SLC) 36 family which functions as transporter for amino acids and derivatives. SLC36A4 is widely distributed at the mRNA level in normal tissues and many cancer cell lines. It modulates the mTORC1 signaling and is essential for the proliferation of cancer cells. In addition, small GTPase Rab12 controls the degradation of SLC36A4, which indirectly modulates mTORC1 activity and autophagy. This antibody can recognize the endogenous SLC36A4 protein in multiple cell lines.

Stockage

Stockage:
Stocker à -20°C. Stable pendant un an après l'expédition.
Tampon de stockage:
PBS avec azoture de sodium à 0,02 % et glycérol à 50 % pH 7,3
L'aliquotage n'est pas nécessaire pour le stockage à -20C

*** Les 20ul contiennent 0,1% de BSA.

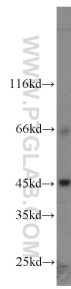
For technical support and original validation data for this product please contact:

T: 1 (888) 4PTGLAB (1-888-478-4522) (toll free in USA), or 1(312) 455-8498 (outside USA)

E: proteintech@ptglab.com
W: ptglab.com

This product is exclusively available under Proteintech Group brand and is not available to purchase from any other manufacturer.

Données de validation sélectionnées



A549 cells were subjected to SDS PAGE followed by western blot with 24066-1-AP (SLC36A4 antibody) at dilution of 1:1000 incubated at room temperature for 1.5 hours.