

À des fins de recherche uniquement

Anticorps Polyclonal de lapin anti-CEP120



Numéro de catalogue: 24067-1-AP

Informations de base

Numéro de catalogue: 24067-1-AP	Numéro d'acquisition GenBank: BC040527	Méthode de purification: Purification par affinité contre l'antigène
Taille: 150ul , Concentration: 600 µg/ml by Nanodrop;	Identification du gène (NCBI): 153241	Dilutions recommandées: WB 1:1000-1:6000 IHC 1:50-1:500 IF 1:50-1:500
Hôte: Lapin	Nom complet: centrosomal protein 120kDa	
Isotype: IgG	MW calculé: 986 aa, 113 kDa	
Immunogen Catalog Number: AG21165	MW observés: 120-130 kDa	

Applications

Applications testées: IF, IHC, WB, ELISA	Contrôles positifs: WB : cellules Jurkat, tissu pulmonaire de souris IHC : tissu pancréatique humain, IF : cellules HeLa,
Spécificité de l'espèce: Humain, souris	
Remarque-IHC: il est suggéré de démasquer l'antigène avec un tampon de TE buffer pH 9,0; (*) À défaut, 'le démasquage de l'antigène peut être effectué avec un tampon citrate pH 6,0.	

Informations générales

CEP120 encodes a protein that functions in the microtubule-dependent coupling of the nucleus and the centrosome. It is involved in regulating centrosome-mediated interkinetic nuclear migration of neural progenitors (PubMed: 27185865, PubMed: 23857771). CEP120, SPICE1 and CPAP are required for centriole elongation and for recruitment of distal microtubule-capping proteins and CEP135 to procentrioles (PubMed: 23810536). Cep120 and Taccs are required for the neural progenitor pool during mouse neocortical development (PubMed: 17920017).

Stockage

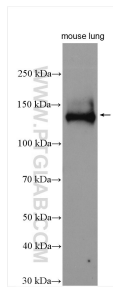
Stockage:
Stocker à -20°C. Stable pendant un an après l'expédition.
Tampon de stockage:
PBS avec azoture de sodium à 0,02 % et glycérol à 50 % pH 7,3
L'aliquotage n'est pas nécessaire pour le stockage à -20C

*** Les 20ul contiennent 0,1% de BSA.

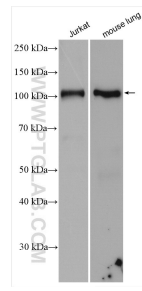
For technical support and original validation data for this product please contact:
T: 1 (888) 4PTGLAB (1-888-478-4522) (toll free in USA), or 1(312) 455-8498 (outside USA)
E: proteintech@ptglab.com
W: ptglab.com

This product is exclusively available under Proteintech Group brand and is not available to purchase from any other manufacturer.

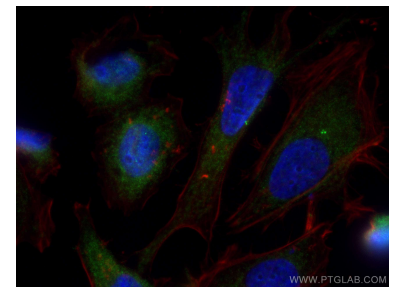
Données de validation sélectionnées



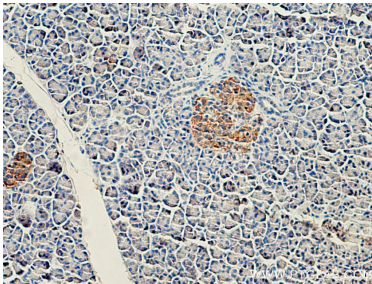
mouse lung tissue were subjected to SDS PAGE followed by western blot with 24067-1-AP (CEP120 antibody) at dilution of 1:1000 incubated at room temperature for 1.5 hours.



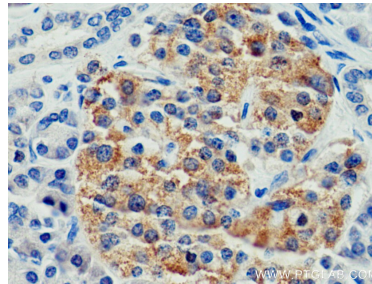
Various lysates were subjected to SDS PAGE followed by western blot with 24067-1-AP (CEP120 antibody) at dilution of 1:3000 incubated at room temperature for 1.5 hours.



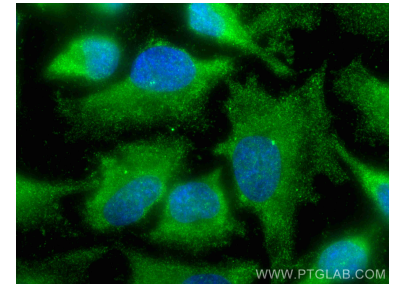
Immunofluorescent analysis of (-20°C Methanol) fixed HeLa cells using CEP120 antibody (24067-1-AP) at dilution of 1:200 and Coralite@488-Conjugated AffiniPure Goat Anti-Rabbit IgG(H+L), Coralite@594 Beta Actin antibody (CL594-66009, Clone: 2D4H5, red).



Immunohistochemical analysis of paraffin-embedded human pancreas tissue slide using 24067-1-AP (CEP120 antibody) at dilution of 1:200 (under 10x lens). Heat mediated antigen retrieval with Tris-EDTA buffer (pH 9.0).



Immunohistochemical analysis of paraffin-embedded human pancreas tissue slide using 24067-1-AP (CEP120 antibody) at dilution of 1:200 (under 40x lens). Heat mediated antigen retrieval with Tris-EDTA buffer (pH 9.0).



Immunofluorescent analysis of (-20°C Methanol) fixed HeLa cells using CEP120 antibody (24067-1-AP) at dilution of 1:200 and Coralite@488-Conjugated AffiniPure Goat Anti-Rabbit IgG(H+L).