

À des fins de recherche uniquement

Anticorps Polyclonal de lapin anti-SPRED2



Numéro de catalogue: 24091-1-AP

Phare

4 Publications

Informations de base

Numéro de catalogue: 24091-1-AP	Numéro d'acquisition GenBank: BC136334	Méthode de purification: Purifié par affinité contre l'antigène
Taille: 150ul, Concentration: 350 µg/ml by Nanodrop and 133 µg/ml by Bradford method using BSA as the standard;	Identification du gène (NCBI): 200734	Dilutions recommandées: WB 1:1000-1:6000 IHC 1:20-1:200 IF 1:50-1:500
Hôte: Lapin	Nom complet: sprouty-related, EVH1 domain containing 2	
Isotype: IgG	MW calculé: 418 aa, 48 kDa	
Immunogen Catalog Number: AG21359	MW observés: 40-48 kDa	

Applications

Applications testées:

IF, IHC, WB, ELISA

Demandes citées:

IF, IHC, WB

Spécificité de l'espèce:

Humain, rat, souris

Espèces citées:

Humain, souris

Remarque-IHC: il est suggéré de démasquer l'antigène avec un tampon de TE buffer pH 9,0; (*) A défaut, le démasquage de l'antigène peut être effectué avec un tampon citrate pH 6,0.

Contrôles positifs:

WB: cellules PC-12, cellules MCF-7, cellules T-47D, tissu cérébral de rat, tissu cérébral de souris, tissu testiculaire de rat, tissu testiculaire de souris

IHC: tissu testiculaire humain,

IF: cellules HeLa,

Informations générales

SPRED2 is a member of the SPRED family of proteins that modulate GFR signaling by inhibiting the Ras-MAPK cascade (PMID: 17094949). SPRED family members are characterized by an N-terminal Enabled/VASP homology 1 domain (EVH1), a central c-Kit binding domain (KBD) and a C-terminal Sprouty-related domain (SPR) (PMID: 17691106). Three mammalian SPREDs (SPRED1-3) have been described. In adult tissues, SPRED2 is expressed ubiquitously, but most highly expressed in glandular epithelia (PMID: 15580519; 17691106). Reduced expression level of SPRED2 has been reported in human hepatocellular carcinoma (HCC), suggesting SPRED2 may play a role in tumorigenesis (PMID: 16652141). Gene disruption of SPRED2 causes dwarfism (PMID: 15946934).

Publications notables

Autrice	Pubmed ID	Journal	Application
Shinsuke Oda	34818323	PLoS One	IHC
Hiroyasu Sakai	35908904	Biol Pharm Bull	WB
Tong Gao	36902429	Int J Mol Sci	WB

Stockage

Stockage:

Stocker à -20°C. Stable pendant un an après l'expédition.

Tampon de stockage:

PBS avec azoture de sodium à 0,02 % et glycérol à 50 % pH 7,3

L'aliquotage n'est pas nécessaire pour le stockage à -20C

*** Les 20ul contiennent 0,1% de BSA.

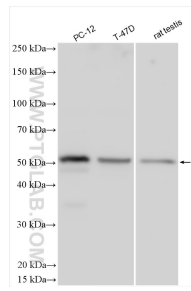
For technical support and original validation data for this product please contact:

T: 1 (888) 4PTGLAB (1-888-478-4522) (toll free in USA), or 1(312) 455-8498 (outside USA)

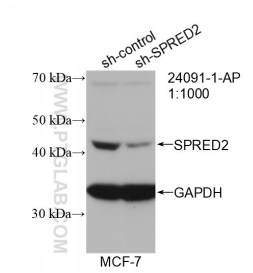
E: proteintech@ptglab.com
W: ptglab.com

This product is exclusively available under Proteintech Group brand and is not available to purchase from any other manufacturer.

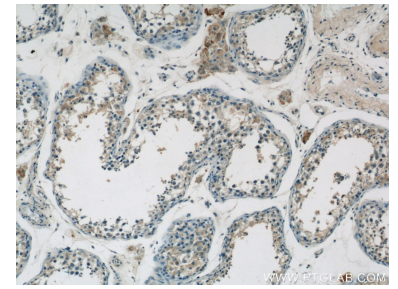
Données de validation sélectionnées



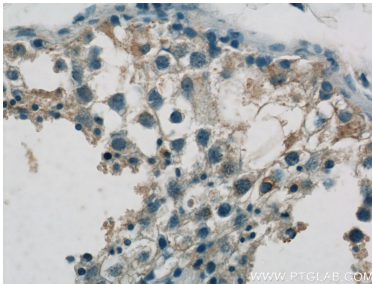
Various lysates were subjected to SDS PAGE followed by western blot with 24091-1-AP (SPRED2 antibody) at dilution of 1:3000 incubated at room temperature for 1.5 hours.



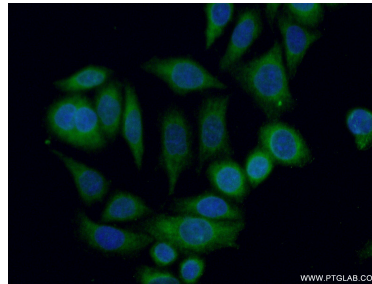
WB result of SPRED2 antibody (24091-1-AP; 1:1000; incubated at room temperature for 1.5 hours) with sh-Control and sh-SPRED2 transfected MCF-7 cells.



Immunohistochemical analysis of paraffin-embedded human testis tissue slide using 24091-1-AP (SPRED2 Antibody) at dilution of 1:50 (under 10x lens).



Immunohistochemical analysis of paraffin-embedded human testis tissue slide using 24091-1-AP (SPRED2 Antibody) at dilution of 1:50 (under 40x lens).



Immunofluorescent analysis of (-20°C Ethanol) fixed HeLa cells using 24091-1-AP (SPRED2 antibody) at dilution of 1:50 and Alexa Fluor 488-conjugated AffiniPure Goat Anti-Rabbit IgG(H+L).