

À des fins de recherche uniquement

# Anticorps Polyclonal de lapin anti-PCGF6



Numéro de catalogue: 24103-1-AP

Phare

10 Publications

## Informations de base

Numéro de catalogue:

24103-1-AP

Numéro d'acquisition GenBank:

BC010235

Méthode de purification:

Purifié par affinité contre l'antigène

Taille:

150ul, Concentration: 350 µg/ml by Nanodrop and 220 µg/ml by Bradford method using BSA as the standard;

Identification du gène (NCBI):

84108

Dilutions recommandées:

WB 1:1000-1:4800

IHC 1:150-1:600

Hôte:

Lapin

Nom complet:

polycomb group ring finger 6

MW calculé

352 aa, 39 kDa

Isotype:

IgG

MW observés:

40-50 kDa

Immunogen Catalog Number:

AG21124

## Applications

Applications testées:

IHC, WB, ELISA

Demandes citées:

ChIP, CoIP, IP, WB

Spécificité de l'espèce:

Humain, souris

Espèces citées:

Humain, souris

**Remarque-IHC: il est suggéré de démasquer l'antigène avec un tampon de TE buffer pH 9,0; (\*) A défaut, le démasquage de l'antigène peut être effectué avec un tampon citrate pH 6,0.**

Contrôles positifs:

WB : cellules HEK-293, cellules HEK-293T, cellules PC-13, tissu hépatique de souris

IHC : tissu testiculaire de souris,

## Informations générales

PCGF6, also named as MBLR or RNF134, is a 350 amino acid protein, which contains one RING-type zinc finger. PCGF6 localizes in the nucleus and is widely expressed in many tissues. PCGF6 as a transcriptional repressor may modulate the levels of histone H3K4Me3 by activating KDM5D histone demethylase.

## Publications notables

Autrice	Pubmed ID	Journal	Application
Jack-Christophe Cossec	30401455	Cell Stem Cell	
Jiatian Lin	35813477	Int J Biol Sci	WB
Bastian Stielow	33980486	Sci Adv	

## Stockage

Stockage:

Stocker à -20°C. Stable pendant un an après l'expédition.

Tampon de stockage:

PBS avec azote de sodium à 0,02 % et glycérol à 50 % pH 7,3

L'aliquotage n'est pas nécessaire pour le stockage à -20C

\*\*\* Les 20ul contiennent 0,1% de BSA.

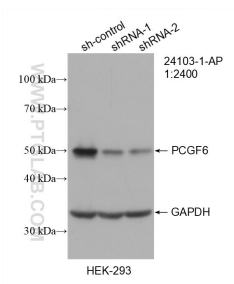
For technical support and original validation data for this product please contact:

T: 1 (888) 4PTGLAB (1-888-478-4522) (toll free in USA), or 1(312) 455-8498 (outside USA)

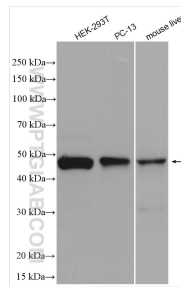
E: proteintech@ptglab.com  
W: ptglab.com

This product is exclusively available under Proteintech Group brand and is not available to purchase from any other manufacturer.

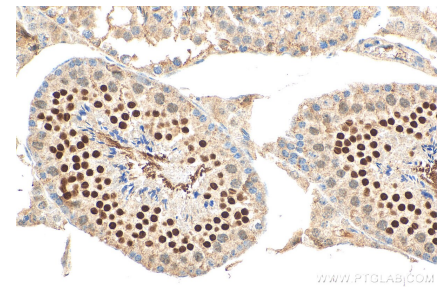
## Données de validation sélectionnées



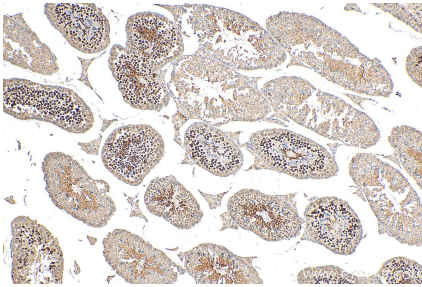
WB result of PCGF6 antibody (24103-1-AP; 1:2400; incubated at room temperature for 1.5 hours) with sh-Control and sh-PCGF6 transfected HEK-293 cells.



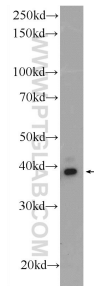
Various lysates were subjected to SDS PAGE followed by western blot with 24103-1-AP (PCGF6 antibody) at dilution of 1:1000 incubated at room temperature for 1.5 hours.



Immunohistochemical analysis of paraffin-embedded mouse testis tissue slide using 24103-1-AP (PCGF6 antibody) at dilution of 1:300 (under 40x lens). Heat mediated antigen retrieval with Tris-EDTA buffer (pH 9.0).



Immunohistochemical analysis of paraffin-embedded mouse testis tissue slide using 24103-1-AP (PCGF6 antibody) at dilution of 1:300 (under 10x lens). Heat mediated antigen retrieval with Tris-EDTA buffer (pH 9.0).



PC-13 cells were subjected to SDS PAGE followed by western blot with 24103-1-AP (PCGF6 Antibody) at dilution of 1:1500 incubated at room temperature for 1.5 hours.