

À des fins de recherche uniquement

# Anticorps Polyclonal de lapin anti-SOD2



Numéro de catalogue: 24127-1-AP

264 Publications

## Informations de base

Numéro de catalogue:

24127-1-AP

Taille:

150ul, Concentration: 700 µg/ml by Nanodrop;

Hôte:

Lapin

Isotype:

IgG

Immunogen Catalog Number:

AG21388

Numéro d'acquisition GenBank:

BC016934

Identification du gène (NCBI):

6648

Nom complet:

superoxide dismutase 2, mitochondrial

MW calculé

25 kDa

MW observés:

25 kDa

Méthode de purification:

Purification par affinité contre l'antigène

Dilutions recommandées:

WB 1:5000-1:50000

IP 0.5-4.0 µg for IP and 1:5000-1:50000 for WB

IHC 1:500-1:2000

IF 1:20-1:200

## Applications

Applications testées:

IF, IHC, IP, WB, ELISA

Demandes citées:

CoIP, ELISA, IF, IHC, IP, WB

Spécificité de l'espèce:

Humain, rat, souris

Espèces citées:

bovin, Chèvre, Humain, porc, poulet, rat, souris

**Remarque-IHC: il est suggéré de démasquer l'antigène avec un tampon de TE buffer pH 9,0; (\*) À défaut, 'le démasquage de l'antigène peut être effectué avec un tampon citrate pH 6,0.**

Contrôles positifs:

WB : cellules DU 145, cellules HEK-293, cellules HeLa, tissu cérébral de rat, tissu cérébral de souris

IP : tissu cérébral de souris,

IHC : tissu de cancer du foie humain, tissu de cancer du sein humain

IF : cellules HUVEC,

## Informations générales

SOD2(superoxide dismutase 2, mitochondrial ) is also named as IPOB, MNSOD, SODM, Mn-SOD and belongs to the iron/manganese superoxide dismutase family. It is a marker of mitochondria, which is restricted to the perinuclear area in a cell with aggregate formation of mutant SOD1(PMID:12659845). It functions as the first line of antioxidant defense against highly reactive superoxide radicals and it appears to be early predictors for survival in septic patients with MIF(PMID:20863520). It has 2 isoforms with the molecular weight of 25 kDa and 21 kDa.

## Publications notables

Autrice	Pubmed ID	Journal	Application
Huidong Wang	36249770	Front Pharmacol	IF
Dan Tang	34815154	Phytomedicine	WB
Wen Zhang	31553975	Kidney Blood Press Res	WB

## Stockage

Stockage:

Stocker à -20°C. Stable pendant un an après l'expédition.

Tampon de stockage:

PBS avec azoture de sodium à 0,02 % et glycérol à 50 % pH 7,3

L'aliquotage n'est pas nécessaire pour le stockage à -20C

\*\*\* Les 20ul contiennent 0,1% de BSA.

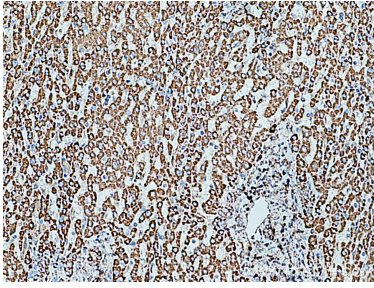
For technical support and original validation data for this product please contact:

T: 1 (888) 4PTGLAB (1-888-478-4522) (toll free in USA), or 1(312) 455-8498 (outside USA)

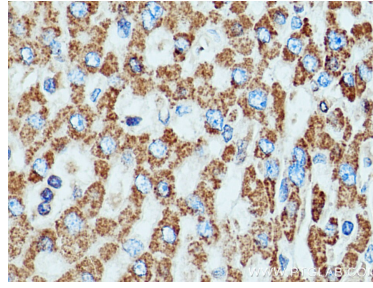
E: proteintech@ptglab.com  
W: ptglab.com

This product is exclusively available under Proteintech Group brand and is not available to purchase from any other manufacturer.

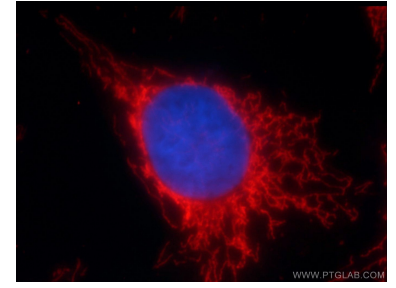
## Données de validation sélectionnées



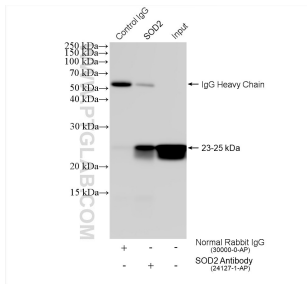
Immunohistochemical analysis of paraffin-embedded human liver cancer tissue slide using 24127-1-AP (SOD2 antibody) at dilution of 1:1000 (under 10x lens). Heat mediated antigen retrieval with Tris-EDTA buffer (pH 9.0).



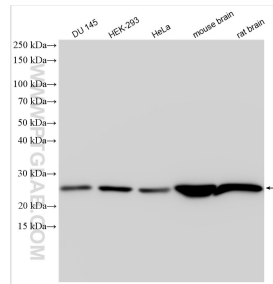
Immunohistochemical analysis of paraffin-embedded human liver cancer tissue slide using 24127-1-AP (SOD2 antibody) at dilution of 1:1000 (under 40x lens). Heat mediated antigen retrieval with Tris-EDTA buffer (pH 9.0).



Immunofluorescent analysis of HUVEC cells using 24127-1-AP (SOD2 antibody) at dilution of 1:50 and Rhodamine-Goat anti-Rabbit IgG.



IP result of anti-SOD2 (IP: 24127-1-AP, 4 $\mu$ g; Detection: 24127-1-AP 1:10000) with mouse brain tissue lysate 1280  $\mu$ g.



Various lysates were subjected to SDS PAGE followed by western blot with 24127-1-AP (SOD2 antibody) at dilution of 1:10000 incubated at room temperature for 1.5 hours.