

À des fins de recherche uniquement

# Anticorps Polyclonal de lapin anti-XBP1S/XBP1U



Numéro de catalogue: 24168-1-AP

Phare

7 Publications

## Informations de base

Numéro de catalogue: 24168-1-AP	Numéro d'acquisition GenBank: BC000938	Méthode de purification: Purifié par affinité contre l'antigène
Taille: 150ul , Concentration: 700 µg/ml by Nanodrop;	Identification du gène (NCBI): 7494	Dilutions recommandées: WB 1:1000-1:5000 IHC 1:50-1:500
Hôte: Lapin	Nom complet: X-box binding protein 1	
Isotype: IgG	MW calculé: 261 aa, 29 kDa	
Immunogen Catalog Number: AG21454	MW observés: ~32 kDa; ~60 kDa	

## Applications

### Applications testées:

FC, IHC, WB, ELISA

### Demandes citées:

WB

### Spécificité de l'espèce:

Humain, souris

### Espèces citées:

Humain, souris

### Contrôles positifs:

WB : cellules HepG2, cellules HEK-293, cellules Jurkat, cellules Raji

IHC : tissu de cancer du sein humain, tissu de cancer du côlon humain, tissu de cancer du foie humain, tissu hépatique de souris

**Remarque-IHC: il est suggéré de démasquer l'antigène avec un tampon de TE buffer pH 9,0; (\*) À défaut, 'le démasquage de l'antigène peut être effectué avec un tampon citrate pH 6,0.**

## Informations générales

XBP1 is also named as XBP2, belongs to the bZIP family. The X-box-binding protein-1 (XBP1) is a transcriptional regulator of the ER stress response that lies downstream of inositol-requiring enzyme 1 (IRE1α) activation (PMID: 14559994). IRE1α possesses both kinase and ribonuclease activity and processes XBP1 mRNA to produce an active transcription factor in response to ER stress (PMID: 11779464, 11780124). It has been found that upon accumulation of unfolded proteins in the endoplasmic reticulum, the mRNA of this gene is processed to an active form by an unconventional splicing mechanism that is mediated by the endonuclease inositol-requiring enzyme 1. The resulting loss of 26 nt from the spliced mRNA causes a frame-shift and an isoform XBP1S, which is the functionally active transcription factor. The isoform encoded by the unspliced mRNA, XBP1U, is constitutively expressed, and thought to function as a negative feedback regulator of XBP1S, which shuts off transcription of target genes during the recovery phase of ER stress (PMID: 11850408). The unspliced XBP1U isoform is composed of 261 amino acid residues, and the spliced XBP1S isoform is composed of 376 amino acid residues. The XBP1 antibody (24168-1-AP) can detect both XBP1U and XBP1S.

## Publications notables

Autrice	Pubmed ID	Journal	Application
Yanxia Huang	32967957	J Virol	WB
Xue YANG	34514754	J Zhejiang Univ Sci B	WB
Weiwei Sheng	33028359	J Exp Clin Cancer Res	WB

## Stockage

### Stockage:

Stocker à -20°C. Stable pendant un an après l'expédition.

### Tampon de stockage:

PBS avec azoture de sodium à 0,02 % et glycérol à 50 % pH 7,3

L'aliquotage n'est pas nécessaire pour le stockage à -20C

\*\*\* Les 20ul contiennent 0,1% de BSA.

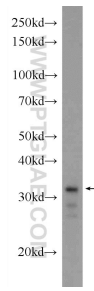
For technical support and original validation data for this product please contact:

T: 1 (888) 4PTGLAB (1-888-478-4522) (toll free in USA), or 1(312) 455-8498 (outside USA)

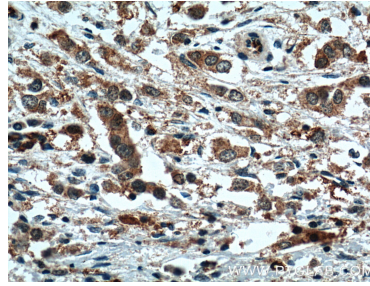
E: proteintech@ptglab.com  
W: ptglab.com

This product is exclusively available under Proteintech Group brand and is not available to purchase from any other manufacturer.

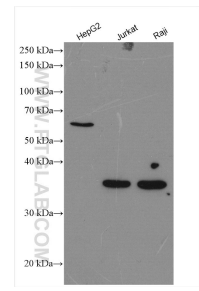
## Données de validation sélectionnées



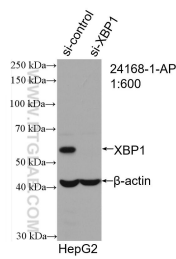
HEK-293 cells were subjected to SDS PAGE followed by western blot with 24168-1-AP (XBP1 Antibody) at dilution of 1:300 incubated at room temperature for 1.5 hours.



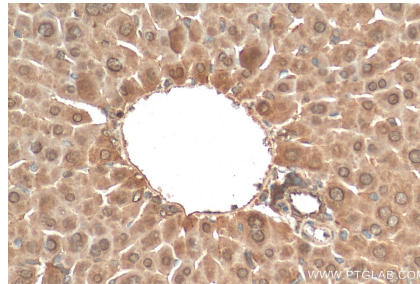
Immunohistochemical analysis of paraffin-embedded human breast cancer tissue slide using 24168-1-AP (XBP1 Antibody) at dilution of 1:200 (under 40x lens). Heat mediated antigen retrieval with Tris-EDTA buffer (pH 9.0).



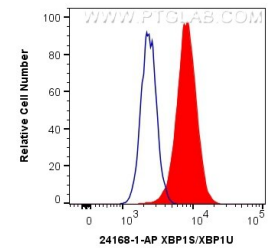
Various lysates were subjected to SDS PAGE followed by western blot with 24168-1-AP (XBP1S/XBP1U antibody) at dilution of 1:2500 incubated at room temperature for 1.5 hours.



WB result of XBP1S/XBP1U antibody (24168-1-AP; 1:600; incubated at room temperature for 1.5 hours) with sh-Control and sh-XBP1S/XBP1U transfected HepG2 cells.



Immunohistochemical analysis of paraffin-embedded mouse liver tissue slide using 24168-1-AP (XBP1S/XBP1U antibody) at dilution of 1:200 (under 40x lens). Heat mediated antigen retrieval with Tris-EDTA buffer (pH 9.0).



$1 \times 10^6$  HepG2 cells were intracellularly stained with 0.4 ug Anti-Human XBP1S/XBP1U (24168-1-AP) and CoraLite®488-Conjugated AffiniPure Goat Anti-Rabbit IgG(H+L) at dilution 1:1000 (red), or 0.4 ug Control Antibody. Cells were fixed with 4% PFA and permeabilized with Flow Cytometry Perm Buffer (PF00011-C).