

À des fins de recherche uniquement

Anticorps Polyclonal de lapin anti-LUC7L2



Numéro de catalogue: 24202-1-AP **Phare**

Informations de base

Numéro de catalogue: 24202-1-AP	Numéro d'acquisition GenBank: BC017163	Méthode de purification: Purifié par affinité contre l'antigène
Taille: 150ul , Concentration: 600 µg/ml by Nanodrop and 347 µg/ml by Bradford method using BSA as the standard;	Identification du gène (NCBI): 51631	Dilutions recommandées: WB 1:500-1:3000 IF 1:50-1:500
Hôte: Lapin	Nom complet: LUC7-like 2 (<i>S. cerevisiae</i>)	
Isotype: IgG	MW calculé: 392 aa, 47 kDa	
Immunogen Catalog Number: AG21135	MW observés: 46 kDa	

Applications

Applications testées: IF, WB, ELISA	Contrôles positifs:
Spécificité de l'espèce: Humain	WB : cellules K-562, cellules HeLa IF : cellules HeLa,

Informations générales

RNA-binding protein LUC7L2 as a negative regulator of DNA virus-triggered innate immune response. Mechanistically, LUC7L2 directly bound to intron 3 of MITA precursor messenger RNA, inhibited its splicing and promoted its nonsense-mediated decay, leading to its downregulation at protein level (PMID:34155193). Moreover, LUC7L2 as a component of the U1 snRNP capable of reprogramming cellular metabolism through changes in alternative pre-mRNA splicing (PMID:33961773).

Stockage

Stockage:
Stocker à -20°C. Stable pendant un an après l'expédition.
Tampon de stockage:
PBS avec azoture de sodium à 0,02 % et glycérol à 50 % pH 7,3
L'aliquotage n'est pas nécessaire pour le stockage à -20C

***** Les 20ul contiennent 0,1% de BSA.**

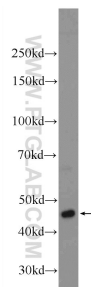
For technical support and original validation data for this product please contact:

T: 1 (888) 4PTGLAB (1-888-478-4522) (toll free in USA), or 1(312) 455-8498 (outside USA)

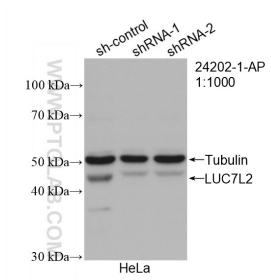
E: proteintech@ptglab.com
W: ptglab.com

This product is exclusively available under Proteintech Group brand and is not available to purchase from any other manufacturer.

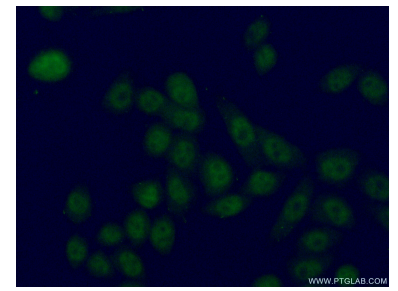
Données de validation sélectionnées



K-562 cells were subjected to SDS PAGE followed by western blot with 24202-1-AP (LUC7L2 Antibody) at dilution of 1:1500 incubated at room temperature for 1.5 hours.



WB result of LUC7L2 antibody (24202-1-AP; 1:1000; incubated at room temperature for 1.5 hours) with sh-Control and sh-LUC7L2 transfected HeLa cells.



Immunofluorescent analysis of (4% PFA) fixed HeLa cells using 24202-1-AP (LUC7L2 antibody) at dilution of 1:50 and Alexa Fluor 488-conjugated AffiniPure Goat Anti-Rabbit IgG(H+L).