

À des fins de recherche uniquement

Anticorps Polyclonal de lapin anti-TAF15



Numéro de catalogue: 24235-1-AP

1 Publications

Informations de base

Numéro de catalogue: 24235-1-AP	Numéro d'acquisition GenBank: BC046099	Méthode de purification: Purifié par affinité contre l'antigène
Taille: 150ul , Concentration: 800 µg/ml by Nanodrop;	Identification du gène (NCBI): 8148	Dilutions recommandées: WB 1:500-1:2000 IHC 1:20-1:200 IF 1:20-1:200
Hôte: Lapin	Nom complet: TAF15 RNA polymerase II, TATA box binding protein (TBP)-associated factor, 68kDa	
Isotype: IgG	MW calculé 592 aa, 62 kDa	
Immunogen Catalog Number: AG20828	MW observés: 68 kDa	

Applications

Applications testées:

IF, IHC, WB, ELISA

Demandes citées:

RIP, WB

Spécificité de l'espèce:

Humain

Espèces citées:

Humain

Remarque-IHC: il est suggéré de démasquer l'antigène avec un tampon de TE buffer pH 9,0; (*) A défaut, 'le démasquage de l'antigène peut être effectué avec un tampon citrate pH 6,0.

Contrôles positifs:

WB : cellules HEK-293,

IHC : tissu testiculaire humain, tissu rénal humain

IF : cellules HEK-293,

Informations générales

TAF15 (TAF2N or TAFII68) is a nuclear protein known to associate with a distinct subpopulation of transcription factor IID (TFIID), a multi-subunit complex that nucleates the pre-initiation complex on promoters of protein-coding genes. TAF15 harbors a transcriptional activation domain, a RNA recognition motif and many Arg-Gly-Gly repeats that participate in RNA binding. TAF15 along with FUS and EWS constitutes the FET (FUS/EWS/TAF15) protein family of heterogeneous nuclear ribonucleoproteins (hnRNPs) class of RNA binding proteins that are multifunctional proteins implicated in numerous aspects of RNA processing/functions. TAF15 is a nuclear protein that shuttle between cytoplasm-nucleus and as RNA/ssDNA-binding protein, it play specific roles during transcription initiation at distinct promoters and enter the preinitiation complex together with the RNA polymerase II. TAF15 as well as other FET member genes are frequently translocated in sarcomas and rare hematopoietic as well as epithelial cancers. Moreover, dominant mutations in genes coding for four hnRNPs (TDP-43, FUS/TLS, TAF15, and EWS) are found in familial and sporadic cases of ALS and a chromosomal aberration involving TAF15/TAF2N is found in a form of extraskeletal myxoid chondrosarcomas (EMC).

Publications notables

Autrice	Pubmed ID	Journal	Application
Dalu Wang	34868956	Front Oncol	WB, RIP

Stockage

Stockage:

Stocker à -20°C. Stable pendant un an après l'expédition.

Tampon de stockage:

PBS avec azoture de sodium à 0,02 % et glycérol à 50 % pH 7,3

L'aliquotage n'est pas nécessaire pour le stockage à -20C

*** Les 20ul contiennent 0,1% de BSA.

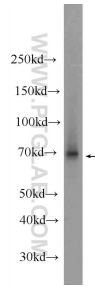
For technical support and original validation data for this product please contact:

T: 1 (888) 4PTGLAB (1-888-478-4522) (toll free in USA), or 1(312) 455-8498 (outside USA)

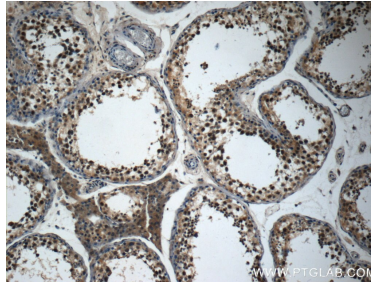
E: proteintech@ptglab.com
W: ptglab.com

This product is exclusively available under Proteintech Group brand and is not available to purchase from any other manufacturer.

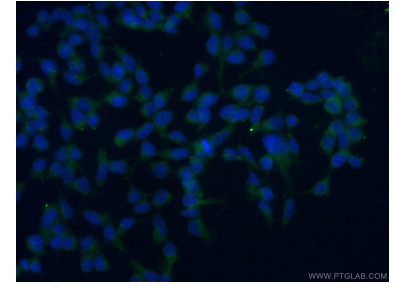
Données de validation sélectionnées



HEK-293 cells were subjected to SDS PAGE followed by western blot with 24235-1-AP (TAF15 Antibody) at dilution of 1:1000 incubated at room temperature for 1.5 hours.



Immunohistochemical analysis of paraffin-embedded human testis slide using 24235-1-AP (TAF15 Antibody) at dilution of 1:50.



Immunofluorescent analysis of (-20°C Ethanol) fixed HEK-293 cells using 24235-1-AP (TAF15 antibody) at dilution of 1:50 and Alexa Fluor 488-conjugated AffiniPure Goat Anti-Rabbit IgG(H+L).