

À des fins de recherche uniquement

Anticorps Polyclonal de lapin anti-MEFV



Numéro de catalogue: 24280-1-AP

3 Publications

Informations de base

Numéro de catalogue:

24280-1-AP

Taille:

150ul, Concentration: 500 µg/ml by Nanodrop and 493 µg/ml by Bradford method using BSA as the standard;

Hôte:

Lapin

Isotype:

IgG

Immunogen Catalog Number:

AG18000

Numéro d'acquisition GenBank:

BC101511

Identification du gène (NCBI):

4210

Nom complet:

Mediterranean fever

MW calculé

781 aa, 86 kDa

MW observés:

86 kDa

Méthode de purification:

Purification par affinité contre l'antigène

Dilutions recommandées:

WB 1:1000-1:5000

Applications

Applications testées:

FC, WB, ELISA

Demandes citées:

FC, IF, IP, WB

Spécificité de l'espèce:

Humain

Espèces citées:

Humain, rat, souris

Contrôles positifs:

WB : cellules THP-1, plasma humain

Informations générales

MEFV, a gene encoding a protein of unknown function, is the genetic cause of Familial Mediterranean fever (FMF), a recessively inherited disorder characterized by recurring attacks of fever and serositis. Recently mutation of MEFV has been reported to cause autoinflammatory disease distinct from FMF.

Publications notables

Autrice	Pubmed ID	Journal	Application
Matthew S J Mangan	36342970	PLoS Biol	FC
Xin Jin	31410136	Exp Ther Med	IF
Nivedita Hegdekar	36652438	Autophagy	WB,IP

Stockage

Stockage:

Stocker à -20°C. Stable pendant un an après l'expédition.

Tampon de stockage:

PBS avec azoture de sodium à 0,02 % et glycérol à 50 % pH 7,3

L'aliquotage n'est pas nécessaire pour le stockage à -20C

*** Les 20ul contiennent 0,1% de BSA.

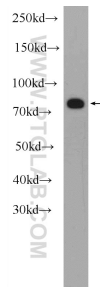
For technical support and original validation data for this product please contact:

T: 1 (888) 4PTGLAB (1-888-478-4522) (toll free in USA), or 1(312) 455-8498 (outside USA)

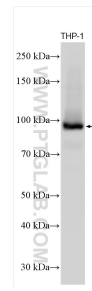
E: proteintech@ptglab.com
W: ptglab.com

This product is exclusively available under Proteintech Group brand and is not available to purchase from any other manufacturer.

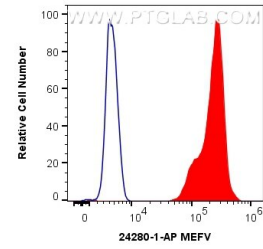
Données de validation sélectionnées



human plasma were subjected to SDS PAGE followed by western blot with 24280-1-AP (MEFV Antibody) at dilution of 1:1000 incubated at room temperature for 1.5 hours.



THP-1 cells were subjected to SDS PAGE followed by western blot with 24280-1-AP (MEFV antibody) at dilution of 1:2500 incubated at room temperature for 1.5 hours.



1X10⁶ A431 cells were intracellularly stained with 0.4 ug Anti-Human MEFV (24280-1-AP) and CoraLite@488-Conjugated AffiniPure Goat Anti-Rabbit IgG(H+L) at dilution 1:1000 (red), or 0.4 ug Isotype Control. Cells were fixed and permeabilized with Transcription Factor Staining Buffer Kit (PF00011).