

À des fins de recherche uniquement

Anticorps Polyclonal de lapin anti-FBXO28



Numéro de catalogue: 24282-1-AP

1 Publications

Informations de base

Numéro de catalogue:

24282-1-AP

Taille:

150ul, Concentration: 550 µg/ml by Nanodrop and 293 µg/ml by Bradford method using BSA as the standard;

Hôte:

Lapin

Isotype:

IgG

Immunogen Catalog Number:

AG14900

Numéro d'acquisition GenBank:

BC031576

Identification du gène (NCBI):

23219

Nom complet:

F-box protein 28

MW calculé

368 aa, 41 kDa

MW observés:

42 kDa

Méthode de purification:

Purification par affinité contre l'antigène

Dilutions recommandées:

WB 1:500-1:2000

IHC 1:20-1:200

Applications

Applications testées:

IHC, WB, ELISA

Demandes citées:

IHC

Spécificité de l'espèce:

Humain

Espèces citées:

Humain

Remarque-IHC: il est suggéré de démasquer l'antigène avec un tampon de TE buffer pH 9,0; (*) A défaut, 'le démasquage de l'antigène peut être 'effectué avec un tampon citrate pH 6,0.

Contrôles positifs:

WB : cellules HEK-293T, cellules HeLa, cellules PC-3

IHC : tissu rénal humain, tissu de cancer du sein humain

Informations générales

FBXO28 also named as F box only protein 28 is a 368 amino-acid protein, which contain 1 F-box domain and belongs to F-box protein family. FBXO28 is a critical component of SCF (Skp1-CUL-1-F-box protein) type E3 ubiquitin ligase complex and are involved in substrate recognition and recruitment for ubiquitination. FBXO28 encodes a cell cycle regulated protein with a critical function in tumor cell proliferation. FBXO28 assembles an SCF-FBXO28 ubiquitin ligase whose activity is required during progression through the cell cycle by cyclin-dependent kinase 1/2 mediated phosphorylation. FBXO28 expression and phosphorylation to be strongly associated with poor prognosis and worse overall survival in human breast cancer.

Publications notables

Autrice	Pubmed ID	Journal	Application
Xinran Qiao	37596321	Oncogene	IHC

Stockage

Stockage:

Stocker à -20°C. Stable pendant un an après l'expédition.

Tampon de stockage:

PBS avec azoture de sodium à 0,02 % et glycérol à 50 % pH 7,3

L'aliquotage n'est pas nécessaire pour le stockage à -20C

*** Les 20ul contiennent 0,1% de BSA.

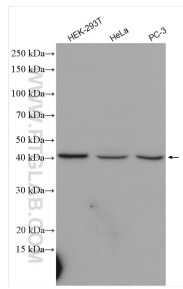
For technical support and original validation data for this product please contact:

T: 1 (888) 4PTGLAB (1-888-478-4522) (toll free in USA), or 1(312) 455-8498 (outside USA)

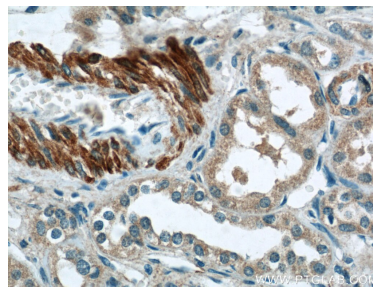
E: proteintech@ptglab.com
W: ptglab.com

This product is exclusively available under Proteintech Group brand and is not available to purchase from any other manufacturer.

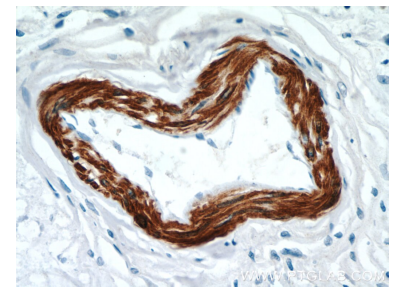
Données de validation sélectionnées



Various lysates were subjected to SDS PAGE followed by western blot with 24282-1-AP (FBXO28 antibody) at dilution of 1:1000 incubated at room temperature for 1.5 hours.



Immunohistochemical analysis of paraffin-embedded human kidney tissue slide using 24282-1-AP (FBXO28 Antibody) at dilution of 1:50 (under 40x lens).



Immunohistochemical analysis of paraffin-embedded human breast cancer tissue slide using 24282-1-AP (FBXO28 Antibody) at dilution of 1:50 (under 40x lens).