

À des fins de recherche uniquement

Anticorps Polyclonal de lapin anti-F2

Numéro de catalogue: 24295-1-AP

5 Publications



Informations de base

Numéro de catalogue:

24295-1-AP

Taille:

150ul, Concentration: 800 µg/ml by Nanodrop and 400 µg/ml by Bradford method using BSA as the standard;

Hôte:

Lapin

Isotype:

IgG

Immunogen Catalog Number:

AG18385

Numéro d'acquisition GenBank:

BC051332

Identification du gène (NCBI):

2147

Nom complet:

coagulation factor II (thrombin)

MW calculé

622 aa, 70 kDa

MW observés:

72 kDa

Méthode de purification:

Purification par affinité contre l'antigène

Dilutions recommandées:

WB 1:5000-1:50000

IP 0.5-4.0 ug for IP and 1:5000-1:50000 for WB

IF 1:50-1:500

Applications

Applications testées:

IF, IP, WB, ELISA

Demandes citées:

IF, WB

Spécificité de l'espèce:

Humain

Espèces citées:

Humain, Plasmodium falciparum

Contrôles positifs:

WB : tissu plasmatique humain,

IP : tissu plasmatique humain,

IF : cellules HUVEC,

Informations générales

Normal blood coagulation is a complex process, involving a cascade of activation of different plasma proteins, ultimately resulting in the formation of a clot, called fibrin. Factor II, or prothrombin, is one of the components of this chain of plasma proteins involved in blood coagulation. Thrombin is essential in the processes of hemostasis and thrombosis.

Publications notables

Autrice	Pubmed ID	Journal	Application
Emna Ouni	35341935	Matrix Biol	IF
Takahiro Tougan	29567995	Sci Rep	WB
Takahiro Tougan	32295584	Malar J	WB, IF

Stockage

Stockage:

Stocker à -20°C. Stable pendant un an après l'expédition.

Tampon de stockage:

PBS avec azoture de sodium à 0,02 % et glycérol à 50 % pH 7,3

L'aliquotage n'est pas nécessaire pour le stockage à -20C

*** Les 20ul contiennent 0,1% de BSA.

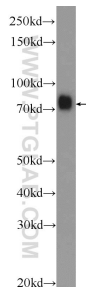
For technical support and original validation data for this product please contact:

T: 1 (888) 4PTGLAB (1-888-478-4522) (toll free in USA), or 1(312) 455-8498 (outside USA)

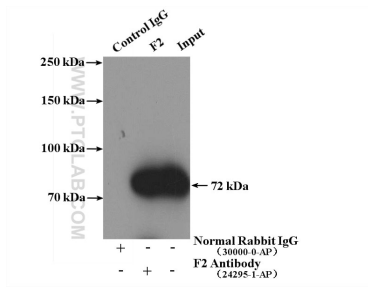
E: proteintech@ptglab.com
W: ptglab.com

This product is exclusively available under Proteintech Group brand and is not available to purchase from any other manufacturer.

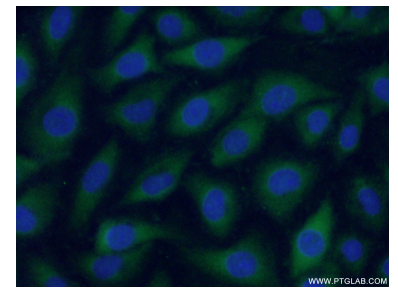
Données de validation sélectionnées



human plasma were subjected to SDS PAGE followed by western blot with 24295-1-AP (F2 Antibody) at dilution of 1:30000 incubated at room temperature for 1.5 hours.



IP Result of anti-F2 (IP:24295-1-AP, 4ug; Detection:24295-1-AP 1:10000) with human plasma lysate 4000ug.



Immunofluorescent analysis of (-20°C Ethanol) fixed HUVEC cells using 24295-1-AP (F2 antibody) at dilution of 1:50 and Alexa Fluor 488-conjugated AffiniPure Goat Anti-Rabbit IgG(H+L).