

À des fins de recherche uniquement

Anticorps Polyclonal de lapin anti-Sodium iodide symporter



Numéro de catalogue: 24324-1-AP

36 Publications

Informations de base

Numéro de catalogue:

24324-1-AP

Taille:

150ul, Concentration: 1200 µg/ml by Nanodrop and 767 µg/ml by Bradford method using BSA as the standard;

Hôte:

Lapin

Isotype:

IgG

Immunogen Catalog Number:

AG19504

Numéro d'acquisition GenBank:

BC105047

Identification du gène (NCBI):

6528

Nom complet:

solute carrier family 5 (sodium iodide symporter), member 5

MW calculé

643 aa, 69 kDa

MW observés:

50-55 kDa, 75-100 kDa

Méthode de purification:

Purification par affinité contre l'antigène

Dilutions recommandées:

WB 1:500-1:1000

IP 0.5-4.0 ug for IP and 1:500-1:1000 for WB

IHC 1:20-1:200

Applications

Applications testées:

FC, IHC, IP, WB, ELISA

Demandes citées:

ChIP, FC, IF, IHC, IP, WB

Spécificité de l'espèce:

Humain, rat, souris

Espèces citées:

Humain, rat, souris

Remarque-IHC: il est suggéré de démasquer l'antigène avec un tampon de TE buffer pH 9.0; (*) A défaut, 'le démasquage de l'antigène peut être effectué avec un tampon citrate pH 6,0.

Contrôles positifs:

WB : tissu testiculaire de souris, cellules SGC-7901, tissu d'estomac de souris

IP : tissu testiculaire de souris,

IHC : tissu de cancer de la thyroïde humaine, tissu ovarien humain

Informations générales

The sodium iodide symporter (Na⁺/I⁻ symporter, NIS), encoded by SLC5A5, is an integral plasma membrane glycoprotein that plays an important role in iodide uptake by thyroid cells. Expression of sodium iodide symporter has also been found in extra-thyroidal tissues, including gastric mucosa, lactating mammary gland and salivary glands. Increased expression of sodium iodide symporter has been found in thyroid tissue from patients with Graves' disease as well as papillary thyroid carcinomas. In addition, sodium iodide symporter was found to express in majority of breast cancer tissue but not in normal tissue. Sodium iodide symporter can be a promising diagnostic and therapeutic tool for thyroid cancer and breast cancer. This antibody recognizes the mature approximately 75-100 kDa protein and a partially glycosylated 50-55 kDa protein. (PMID: 12588808, 9525971)

Publications notables

Autrice	Pubmed ID	Journal	Application
Jun Wang	32940055	Hum Gene Ther	IF
Martin L Read	34520744	Cell Chem Biol	WB
Jianlu Song	30323976	Am J Cancer Res	WB

Stockage

Stockage:

Stocker à -20°C. Stable pendant un an après l'expédition.

Tampon de stockage:

PBS avec azoture de sodium à 0,02 % et glycérol à 50 % pH 7,3

L'aliquotage n'est pas nécessaire pour le stockage à -20C

*** Les 20ul contiennent 0,1% de BSA.

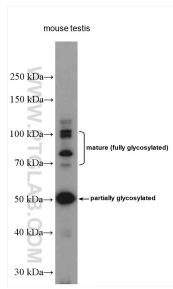
For technical support and original validation data for this product please contact:

T: 1 (888) 4PTGLAB (1-888-478-4522) (toll free in USA), or 1(312) 455-8498 (outside USA)

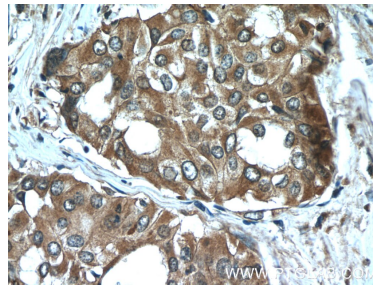
E: proteintech@ptglab.com
W: ptglab.com

This product is exclusively available under Proteintech Group brand and is not available to purchase from any other manufacturer.

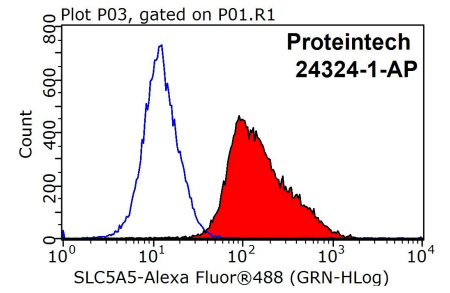
Données de validation sélectionnées



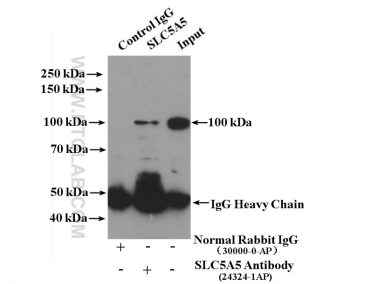
mouse testis tissue were subjected to SDS PAGE followed by western blot with 24324-1-AP (Sodium iodide symporter antibody at dilution of 1:600 incubated at room temperature for 1.5 hours.



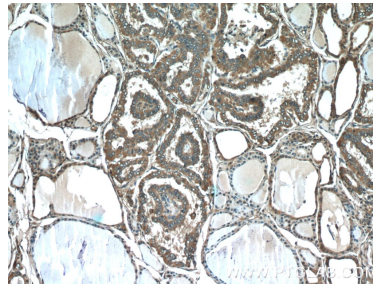
Immunohistochemical analysis of paraffin-embedded human thyroid cancer tissue slide using 24324-1-AP (Sodium iodide symporter antibody at dilution of 1:50 (under 40x lens).



1X10⁶ MCF-7 cells were stained with 0.2ug Sodium iodide symporter antibody (24324-1-AP, red) and control antibody (blue). Fixed with 90% MeOH blocked with 3% BSA (30 min). Alexa Fluor 488-conjugated AffiniPure Goat Anti-Rabbit IgG(H+L) with dilution 1:100.



IP Result of anti-Sodium iodide symporter (IP:24324-1-AP, 4ug; Detection:24324-1-AP 1:500) with mouse testis tissue lysate 4000ug.



Immunohistochemical analysis of paraffin-embedded human thyroid cancer tissue slide using 24324-1-AP (Sodium iodide symporter antibody at dilution of 1:50 (under 10x lens).