

À des fins de recherche uniquement

Anticorps Polyclonal de lapin anti-ANKRD16



Numéro de catalogue: 24334-1-AP

Informations de base

Numéro de catalogue: 24334-1-AP	Numéro d'acquisition GenBank: BC062346	Méthode de purification: Purification par affinité contre l'antigène
Taille: 150ul, Concentration: 650 µg/ml by Nanodrop and 320 µg/ml by Bradford method using BSA as the standard;	Identification du gène (NCBI): 54522	Dilutions recommandées: WB 1:500-1:1000 IF 1:50-1:500
Hôte: Lapin	Nom complet: ankyrin repeat domain 16	
Isotype: IgG	MW calculé: 361 aa, 39 kDa	
Immunogen Catalog Number: AG19369	MW observés: 39-45 kDa	

Applications

Applications testées: IF, WB, ELISA	Contrôles positifs:
Spécificité de l'espèce: Humain, souris	WB: cellules HeLa, cellules PC-3, tissu hépatique de souris IF: cellules HeLa,

Informations générales

ANKRD16, a vertebrate-specific protein that contains ankyrin repeats, binds directly to the catalytic domain of AlaRS. Serine that is misactivated by AlaRS is captured by the lysine side chains of ANKRD16, which prevents the charging of serine adenylates to tRNA^{Ala} and precludes serine misincorporation in nascent peptides. The deletion of Ankrd16 in the brains of Aarssti/sti mice causes widespread protein aggregation and neuron loss (PMID: 29769718).

Stockage

Stockage:
Stocker à -20°C. Stable pendant un an après l'expédition.
Tampon de stockage:
PBS avec azoture de sodium à 0,02 % et glycérol à 50 % pH 7,3
L'aliquotage n'est pas nécessaire pour le stockage à -20C

*** Les 20ul contiennent 0,1% de BSA.

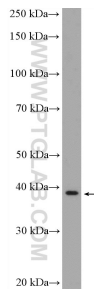
For technical support and original validation data for this product please contact:

T: 1 (888) 4PTGLAB (1-888-478-4522) (toll free in USA), or 1(312) 455-8498 (outside USA)

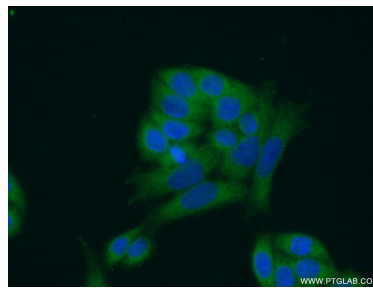
E: proteintech@ptglab.com
W: ptglab.com

This product is exclusively available under Proteintech Group brand and is not available to purchase from any other manufacturer.

Données de validation sélectionnées



HeLa cells were subjected to SDS PAGE followed by western blot with 24334-1-AP (ANKRD16 Antibody) at dilution of 1:600 incubated at room temperature for 1.5 hours.



Immunofluorescent analysis of (-20°C Ethanol) fixed HeLa cells using 24334-1-AP (ANKRD16 antibody) at dilution of 1:50 and Alexa Fluor 488-conjugated AffiniPure Goat Anti-Rabbit IgG(H+L).