

À des fins de recherche uniquement

Anticorps Polyclonal de lapin anti-SETD6



Numéro de catalogue: 24377-1-AP

Informations de base

| | | |
|--|--|--|
| Numéro de catalogue: 24377-1-AP | Numéro d'acquisition GenBank: BC022451 | Méthode de purification: Purification par affinité contre l'antigène |
| Taille: 150ul, Concentration: 1100 µg/ml by Nanodrop and 567 µg/ml by Bradford method using BSA as the standard; | Identification du gène (NCBI): 79918 | Dilutions recommandées: WB 1:500-1:1000 |
| Hôte: Lapin | Nom complet: SET domain containing 6 | |
| Isotype: IgG | MW calculé: 473 aa, 53 kDa | |
| Immunogen Catalog Number: AG19485 | MW observés: 53 kDa | |

Applications

| | |
|---|--|
| Applications testées: WB, ELISA | Contrôles positifs: WB : cellules RAW 264.7, |
| Spécificité de l'espèce: Humain, souris | |

Informations générales

SETD6 also named as SET domain containing 6 is a 473 amino-acid protein, which localizes in the Nucleus. The molecular weight of SETD6 is 53kDa. SETD6 consists of 1 SET domain and belongs to the class V-like SAM-binding methyltransferase superfamily. SETD6 as a protein-lysine N-methyltransferase that specifically monomethylates at Lysine 310 of the RE1A subunit of NF-kappa-B complex, leading to down-regulate NF-kappa-B transcription factor activity.

Stockage

Stockage:
Stocker à -20°C. Stable pendant un an après l'expédition.
Tampon de stockage:
PBS avec azoture de sodium à 0,02 % et glycérol à 50 % pH 7,3
L'aliquotage n'est pas nécessaire pour le stockage à -20C

*** Les 20ul contiennent 0,1% de BSA.

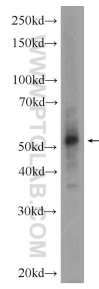
For technical support and original validation data for this product please contact:

T: 1 (888) 4PTGLAB (1-888-478-4522) (toll free in USA), or 1(312) 455-8498 (outside USA)

E: proteintech@ptglab.com
W: ptglab.com

This product is exclusively available under Proteintech Group brand and is not available to purchase from any other manufacturer.

Données de validation sélectionnées



RAW 264.7 cells were subjected to SDS PAGE followed by western blot with 24377-1-AP (SETD6 Antibody) at dilution of 1:600 incubated at room temperature for 1.5 hours.