

À des fins de recherche uniquement

Anticorps Polyclonal de lapin anti-MLK4



Numéro de catalogue: 24395-1-AP

Informations de base

Numéro de catalogue: 24395-1-AP	Numéro d'acquisition GenBank: BC136649	Méthode de purification: Purification par affinité contre l'antigène
Taille: 150ul , Concentration: 400 µg/ml by Nanodrop and 247 µg/ml by Bradford method using BSA as the standard;	Identification du gène (NCBI): 84451	Dilutions recommandées: WB 1:500-1:2000 IF 1:10-1:100
Hôte: Lapin	Nom complet: mixed lineage kinase 4	
Isotype: IgG	MW calculé 1036 aa, 114 kDa	
Immunogen Catalog Number: AG18904	MW observés: 53 kDa	

Applications

Applications testées: IF, WB, ELISA	Contrôles positifs: WB : cellules HeLa, IF : cellules C6,
Spécificité de l'espèce: Humain, rat, souris	

Informations générales

MLK4 belongs to the MAP kinase kinase kinase subfamily. The MLK family members are characterized by the presence of signature sequences of Ser/Thr and Tyr kinases within their catalytic domain. The MLK1-4 contains an aminoterminal Src-Homology (SH3) domain, followed by the kinase domain, a leucine-zipper region, and a Cdc42/Rac-interactive binding (CRIB) motif. MLK4 expressed in two splicing variants, MLK4 α and MLK4 β . The difference of these two isoforms is located in their C-terminal portion. The negative effect of MLK4 on LPS-induced ERK and JNK activation could be very important in controlling the level of cytokine expression, and thus maintaining the balance of inflammatory responses. (PMID:21602844). This protein has 3 isoforms produced by alternative splicing with the molecular weight of 63 kDa, 113 kDa, 53 kDa.

Stockage

Stockage:
Stocker à -20°C. Stable pendant un an après l'expédition.
Tampon de stockage:
PBS avec azoture de sodium à 0,02 % et glycérol à 50 % pH 7,3
L'aliquotage n'est pas nécessaire pour le stockage à -20C

*** Les 20ul contiennent 0,1% de BSA.

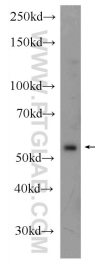
For technical support and original validation data for this product please contact:

T: 1 (888) 4PTGLAB (1-888-478-4522) (toll free in USA), or 1(312) 455-8498 (outside USA)

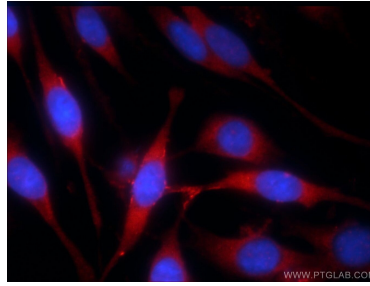
E: proteintech@ptglab.com
W: ptglab.com

This product is exclusively available under Proteintech Group brand and is not available to purchase from any other manufacturer.

Données de validation sélectionnées



HeLa cells were subjected to SDS PAGE followed by western blot with 24395-1-AP (MLK4 antibody) at dilution of 1:1000 incubated at room temperature for 1.5 hours.



Immunofluorescent analysis of C6 cells using 24395-1-AP (MLK4 antibody) at dilution of 1:25 and Rhodamine-Goat anti-Rabbit IgG.