

À des fins de recherche uniquement

Anticorps Polyclonal de lapin anti-TALPID3



Numéro de catalogue: 24421-1-AP

Phare

9 Publications

Informations de base

Numéro de catalogue:

24421-1-AP

Numéro d'acquisition GenBank:

BC066647

Méthode de purification:

Purification par affinité contre l'antigène

Taille:

150ul, Concentration: 450 µg/ml by Nanodrop and 413 µg/ml by Bradford method using BSA as the standard;

Identification du gène (NCBI):

9786

Dilutions recommandées:

IHC 1:50-1:500
IF 1:1000-1:4000

Hôte:

Lapin

Nom complet:

KIAA0586

MW calculé

1533 aa, 169 kDa

Isotype:

IgG

Immunogen Catalog Number:

AG19813

Applications

Applications testées:

IF, IHC, ELISA

Contrôles positifs:

IHC : tissu cérébral humain,

IF : cellules MDCK,

Demandes citées:

CoIP, IF, WB

Spécificité de l'espèce:

canin, Humain, souris

Espèces citées:

Humain, souris, Caenorhabditis elegans

Remarque-IHC: il est suggéré de démasquer l'antigène avec un tampon de TE buffer pH 9,0; (*) A défaut, le démasquage de l'antigène peut être effectué avec un tampon citrate pH 6,0.

Informations générales

KIAA0586 also named as Talpid3 is a 1472 amino-acid protein, which belongs to Talpid3 family. Talpid3 is a gene essential for vertebrate development. Studies in chicken, mouse, zebrafish and human have shown that TALPID3 is a centrosomal protein, mutants null for TALPID3 fail to produce cilia, resulting in far reaching signalling defects such as polydactyly, dorsalised neural tube, craniofacial and vascular defects often due to abnormalities in Hedgehog signal transduction. Talpid3 is absolutely required for the function of both Gli repressor and activator in the intracellular Hedgehog pathway and ciliogenesis. TALPID3 may be identified as a subcellular marker of centrosome and needed to further studied.

Publications notables

Autrice	Pubmed ID	Journal	Application
Louise A Stephen	26386247	Elife	IF
Eleni Petsouki	34518642	Commun Biol	WB
Hao Yan	32366837	Nat Commun	WB,IF,CoIP

Stockage

Stockage:

Stocker à -20°C. Stable pendant un an après l'expédition.

Tampon de stockage:

PBS avec azoture de sodium à 0,02 % et glycérol à 50 % pH 7,3

L'aliquotage n'est pas nécessaire pour le stockage à -20C

*** Les 20ul contiennent 0,1% de BSA.

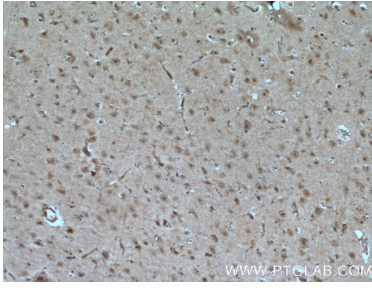
For technical support and original validation data for this product please contact:

T: 1 (888) 4PTGLAB (1-888-478-4522) (toll free in USA), or 1(312) 455-8498 (outside USA)

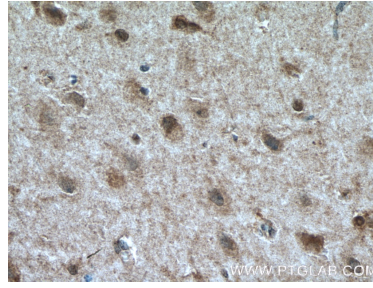
E: proteintech@ptglab.com
W: ptglab.com

This product is exclusively available under Proteintech Group brand and is not available to purchase from any other manufacturer.

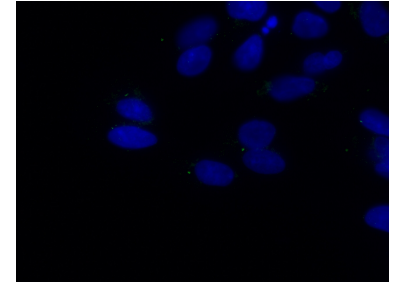
Données de validation sélectionnées



Immunohistochemical analysis of paraffin-embedded human brain tissue slide using 24421-1-AP (TALPID3 antibody) at dilution of 1:200 (under 10x lens). Heat mediated antigen retrieval with Tris-EDTA buffer (pH 9.0).



Immunohistochemical analysis of paraffin-embedded human brain tissue slide using 24421-1-AP (TALPID3 antibody) at dilution of 1:200 (under 40x lens). Heat mediated antigen retrieval with Tris-EDTA buffer (pH 9.0).



Immunofluorescent analysis of (-20°C Methanol) fixed MDCK cells using TALPID3 antibody (24421-1-AP) at dilution of 1:2000 and CoraLite®488-Conjugated AffiniPure Goat Anti-Rabbit IgG(H+L).