

À des fins de recherche uniquement

Anticorps Polyclonal de lapin anti-C1QBP



Numéro de catalogue: 24474-1-AP

Phare

7 Publications

Informations de base

Numéro de catalogue:

24474-1-AP

Taille:

150ul, Concentration: 500 µg/ml by Nanodrop and 293 µg/ml by Bradford method using BSA as the standard;

Hôte:

Lapin

Isotype:

IgG

Immunogen Catalog Number:

AG19773

Numéro d'acquisition GenBank:

BC013731

Identification du gène (NCBI):

708

Nom complet:

complement component 1, q subcomponent binding protein

MW calculé

282 aa, 31 kDa

MW observés:

32 kDa

Méthode de purification:

Purification par affinité contre l'antigène

Dilutions recommandées:

WB 1:5000-1:50000

IHC 1:50-1:500

IF 1:20-1:200

Applications

Applications testées:

FC, IF, IHC, WB, ELISA

Demandes citées:

IF, WB

Spécificité de l'espèce:

Humain, rat, souris

Espèces citées:

Humain, rat, souris

Remarque-IHC: il est suggéré de démasquer l'antigène avec un tampon de TE buffer pH 9,0; (*) A défaut, le démasquage de l'antigène peut être effectué avec un tampon citrate pH 6,0.

Contrôles positifs:

WB : cellules C2C12, cellules HCT 116, cellules HeLa, cellules K-562, cellules NIH/3T3, cellules PC-12, cellules RAW 264.7

IHC : tissu d'amygdalite humaine, tissu de cancer du sein humain

IF : cellules NIH/3T3,

Informations générales

C1QBP, also named as gC1q receptor (gC1qR), p32, p33, and hyaluronan-binding protein 1 (HABP1), is a protein initially copurified with splicing factor SF2 (PMID: 1830244). The protein is synthesized as a pro-protein of 282 amino acids (aa) that is post-translationally processed by removal of the initial 73 aa to a mature protein of 209 aa (PMID: 8262387). C1QBP is an evolutionary conserved and ubiquitously expressed multifunctional protein and has been reported to be a predominantly mitochondrial matrix protein involved in inflammation and infection processes, mitochondrial ribosome biogenesis, regulation of apoptosis and nuclear transcription, and pre-mRNA splicing (PMID: 28942965).

Publications notables

Autrice	Pubmed ID	Journal	Application
Jianyu Ma	31635221	Int J Mol Sci	WB, IF
Jiang Ni	33069744	J Control Release	WB
Yue-Hua Jiang	29984733	Biol Pharm Bull	WB

Stockage

Stockage:

Stocker à -20°C. Stable pendant un an après l'expédition.

Tampon de stockage:

PBS avec azoture de sodium à 0,02 % et glycérol à 50 % pH 7,3

L'aliquoteage n'est pas nécessaire pour le stockage à -20C

*** Les 20ul contiennent 0,1% de BSA.

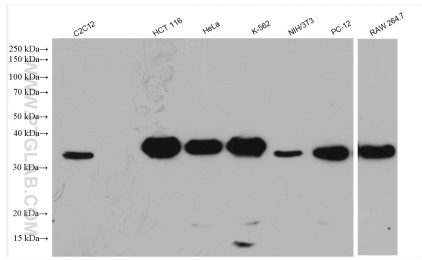
For technical support and original validation data for this product please contact:

T: 1 (888) 4PTGLAB (1-888-478-4522) (toll free in USA), or 1(312) 455-8498 (outside USA)

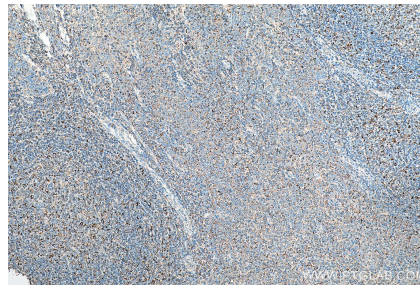
E: proteintech@ptglab.com
W: ptglab.com

This product is exclusively available under Proteintech Group brand and is not available to purchase from any other manufacturer.

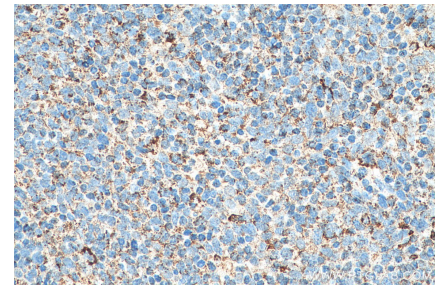
Données de validation sélectionnées



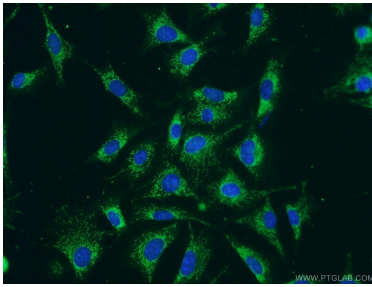
Various lysates were subjected to SDS PAGE followed by western blot with 24474-1-AP (C1QBP antibody) at dilution of 1:10000 incubated at room temperature for 1.5 hours.



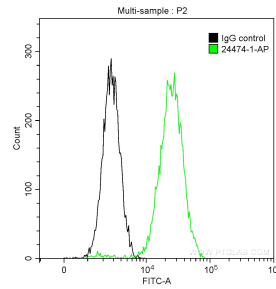
Immunohistochemical analysis of paraffin-embedded human tonsillitis tissue slide using 24474-1-AP (C1QBP antibody) at dilution of 1:200 (under 10x lens). Heat mediated antigen retrieval with Tris-EDTA buffer (pH 9.0).



Immunohistochemical analysis of paraffin-embedded human tonsillitis tissue slide using 24474-1-AP (C1QBP antibody) at dilution of 1:200 (under 40x lens). Heat mediated antigen retrieval with Tris-EDTA buffer (pH 9.0).



Immunofluorescent analysis of NIH/3T3 cells using 24474-1-AP (C1QBP antibody) at dilution of 1:50 and Alexa Fluor 488-conjugated AffiniPure Goat Anti-Rabbit IgG(H+L).



1×10^6 HeLa cells were intracellularly stained with 0.2 ug Anti-Human C1QBP (24474-1-AP) and CoraLite®488-Conjugated AffiniPure Goat Anti-Rabbit IgG(H+L) at dilution 1:1000 (green), and 0.2 ug Control Antibody. Cells were fixed with 90% MeOH.