

À des fins de recherche uniquement

Anticorps Polyclonal de lapin anti-HPSE



Numéro de catalogue: 24529-1-AP

6 Publications

Informations de base

Numéro de catalogue:

24529-1-AP

Taille:

150ul, Concentration: 750 µg/ml by Nanodrop and 360 µg/ml by Bradford method using BSA as the standard;

Hôte:

Lapin

Isotype:

IgG

Immunogen Catalog Number:

AG21479

Numéro d'acquisition GenBank:

BC051321

Identification du gène (NCBI):

10855

Nom complet:

heparanase

MW calculé

543 aa, 61 kDa

MW observés:

60 kDa

Méthode de purification:

Purification par affinité contre l'antigène

Dilutions recommandées:

WB 1:500-1:2000

IHC 1:20-1:200

IF 1:10-1:100

Applications

Applications testées:

IF, IHC, WB, ELISA

Demandes citées:

IHC, WB

Spécificité de l'espèce:

Humain, souris

Espèces citées:

Humain, rat, souris

Contrôles positifs:

WB : cellules Jurkat,

IHC : tissu de cancer du foie humain, tissu placentaire humain

IF : cellules HeLa, cellules HepG2

Remarque-IHC: il est suggéré de démasquer l'antigène avec un tampon de TE buffer pH 9,0; (*) A défaut, le démasquage de l'antigène peut être effectué avec un tampon citrate pH 6,0.

Informations générales

HPSE(Heparanase) is also named as HEP, HPA, HPA1, HPR1, HPSE1, HSE1 and belongs to the glycosyl hydrolase 79 family. It is a endoglycosidase that cleaves heparan sulfate proteoglycans (HSPGs) into heparan sulfate side chains and core proteoglycans. HPSE is essential in the disassembly of the extracellular matrix (ECM) by invading cells. It has 3 isoforms produced by alternative splicing with the molecular weight of 61 kDa, 55 kDa and 53 kDa. The full length protein has six glycosylation sites. The cleavage of the 65 kDa form leads to the generation of a linker peptide, and 8 kDa and 50 kDa products. The active form, the 8/50 kDa heterodimer, is resistant to degradation and glycosylation of the 50 kDa subunit appears to be essential for its solubility.

Publications notables

Autrice	Pubmed ID	Journal	Application
X Wang	25321193	Br J Cancer	
Guang Xu	28081450	Diabetes Res Clin Pract	WB
Yawei Li	28794202	EMBO Rep	WB,IHC

Stockage

Stockage:

Stocker à -20°C. Stable pendant un an après l'expédition.

Tampon de stockage:

PBS avec azoture de sodium à 0,02 % et glycérol à 50 % pH 7,3

L'aliquotage n'est pas nécessaire pour le stockage à -20C

*** Les 20ul contiennent 0,1% de BSA.

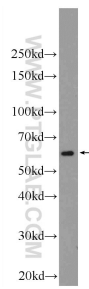
For technical support and original validation data for this product please contact:

T: 1 (888) 4PTGLAB (1-888-478-4522) (toll free in USA), or 1(312) 455-8498 (outside USA)

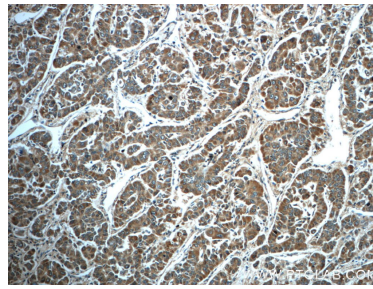
E: proteintech@ptglab.com
W: ptglab.com

This product is exclusively available under Proteintech Group brand and is not available to purchase from any other manufacturer.

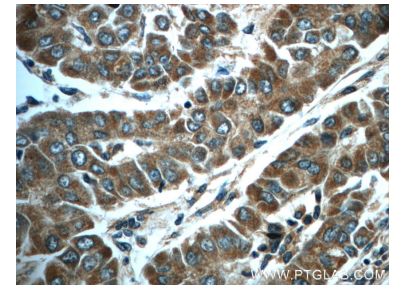
Données de validation sélectionnées



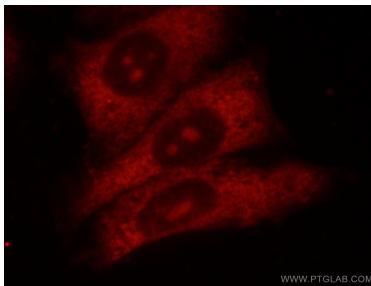
Jurkat cells were subjected to SDS PAGE followed by western blot with 24529-1-AP (HPSE Antibody) at dilution of 1:1000 incubated at room temperature for 1.5 hours.



Immunohistochemical analysis of paraffin-embedded human liver cancer slide using 24529-1-AP (HPSE Antibody) at dilution of 1:50.



Immunohistochemical analysis of paraffin-embedded human liver cancer slide using 24529-1-AP (HPSE Antibody) at dilution of 1:50.



Immunofluorescent analysis of HeLa cells using 24529-1-AP (HPSE antibody) at dilution of 1:25 and Rhodamine-Goat anti-Rabbit IgG.