

À des fins de recherche uniquement

# Anticorps Polyclonal de lapin anti-IGFALS



Numéro de catalogue: 24545-1-AP

## Informations de base

<b>Numéro de catalogue:</b> 24545-1-AP	<b>Numéro d'acquisition GenBank:</b> BC025681	<b>Méthode de purification:</b> Purification par affinité contre l'antigène
<b>Taille:</b> 150ul, Concentration: 350 µg/ml by Nanodrop;	<b>Identification du gène (NCBI):</b> 3483	<b>Dilutions recommandées:</b> WB 1:500-1:3000
<b>Hôte:</b> Lapin	<b>Nom complet:</b> insulin-like growth factor binding protein, acid labile subunit	
<b>Isotype:</b> IgG	<b>MW calculé:</b> 605 aa, 66 kDa	
<b>Immunogen Catalog Number:</b> AG21696	<b>MW observés:</b> 85 kDa	

## Applications

<b>Applications testées:</b> WB, ELISA	<b>Contrôles positifs:</b> WB : plasma humain,
<b>Spécificité de l'espèce:</b> Humain	

## Informations générales

THE ACID-LABILE SUBUNIT (ALS), a liver-derived, GH-dependent, 85-kD glycoprotein, is a key component of the 150-kD IGF circulating ternary complex (PMID: 17726072). The protein encoded by this gene is a serum protein that binds insulin-like growth factors, increasing their half-life and their vascular localization. Production of the encoded protein, which contains twenty leucine-rich repeats, is stimulated by growth hormone. Defects in this gene are a cause of acid-labile subunit deficiency, which manifests itself in a delayed and slow puberty.

## Stockage

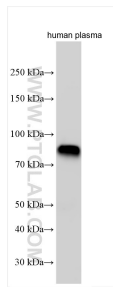
**Stockage:**  
Stocker à -20°C. Stable pendant un an après l'expédition.  
**Tampon de stockage:**  
PBS avec azoture de sodium à 0,02 % et glycérol à 50 % pH 7,3  
L'aliquotage n'est pas nécessaire pour le stockage à -20C

**\*\*\* Les 20ul contiennent 0,1% de BSA.**

For technical support and original validation data for this product please contact:  
T: 1 (888) 4PTGLAB (1-888-478-4522) (toll free in USA), or 1(312) 455-8498 (outside USA) E: proteintech@ptglab.com W: ptglab.com

This product is exclusively available under Proteintech Group brand and is not available to purchase from any other manufacturer.

## Données de validation sélectionnées



Various lysates were subjected to SDS PAGE followed by western blot with 24545-1-AP (IGFALS antibody) at dilution of 1:1500 incubated at room temperature for 1.5 hours.