

À des fins de recherche uniquement

# Anticorps Polyclonal de lapin anti-PTPN6



Numéro de catalogue: 24546-1-AP

12 Publications

## Informations de base

Numéro de catalogue:

24546-1-AP

Taille:

150ul, Concentration: 800 µg/ml by Nanodrop;

Hôte:

Lapin

Isotype:

IgG

Immunogen Catalog Number:

AG21415

Numéro d'acquisition GenBank:

BC002523

Identification du gène (NCBI):

5777

Nom complet:

protein tyrosine phosphatase, non-receptor type 6

MW calculé

597 aa, 68 kDa

MW observés:

63 kDa

Méthode de purification:

Purification par affinité contre l'antigène

Dilutions recommandées:

WB 1:2000-1:8000

IP 0.5-4.0 ug for IP and 1:500-1:1000 for WB

IHC 1:200-1:1000

IF 1:50-1:500

## Applications

Applications testées:

FC, IF, IHC, IP, WB, ELISA

Demandes citées:

CoIP, IF, IHC, IP, WB

Spécificité de l'espèce:

Humain

Espèces citées:

Humain, souris

Contrôles positifs:

WB : cellules Jurkat, cellules A431, cellules HuH-7, cellules Raji

IP : cellules Jurkat,

IHC : tissu de cancer du sein humain,

IF : cellules MCF-7, cellules A431

**Remarque-IHC: il est suggéré de démasquer l'antigène avec un tampon de TE buffer pH 9,0; (\*) À défaut, le démasquage de l'antigène peut être effectué avec un tampon citrate pH 6,0.**

## Informations générales

PTPN6 (Tyrosine-protein phosphatase non-receptor type 6) is also named as HCP, PTP1C and belongs to the protein-tyrosine phosphatase family. It regulates muscle INS action in a cell-autonomous manner, further suggesting that the PTPase negatively modulates INS action through down-regulation of both INS signaling to AKT1 and SLC2A4 translocation, as well as SLC2A4 expression (PMID:21952243). It has 4 isoforms produced by alternative splicing.

## Publications notables

Autrice	Pubmed ID	Journal	Application
Ying Ren	31645658	Acta Pharmacol Sin	WB
Xiaofei Shen	31594861	J Biol Chem	WB
Ighodaro Igbe	29371942	Oncotarget	WB

## Stockage

Stockage:

Stocker à -20°C. Stable pendant un an après l'expédition.

Tampon de stockage:

PBS avec azoture de sodium à 0,02 % et glycérol à 50 % pH 7,3

L'aliquotage n'est pas nécessaire pour le stockage à -20C

\*\*\* Les 20ul contiennent 0,1% de BSA.

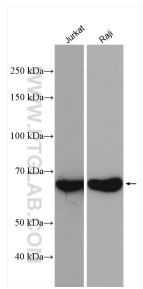
For technical support and original validation data for this product please contact:

T: 1 (888) 4PTGLAB (1-888-478-4522) (toll free in USA), or 1(312) 455-8498 (outside USA)

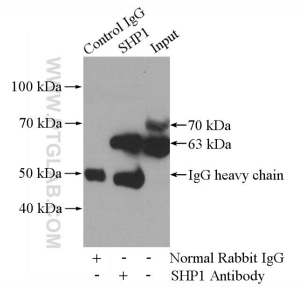
E: proteintech@ptglab.com  
W: ptglab.com

This product is exclusively available under Proteintech Group brand and is not available to purchase from any other manufacturer.

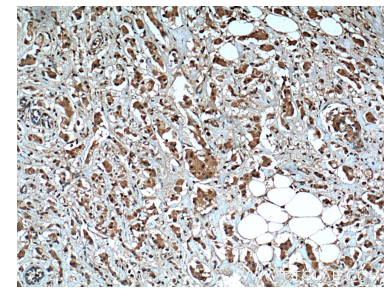
## Données de validation sélectionnées



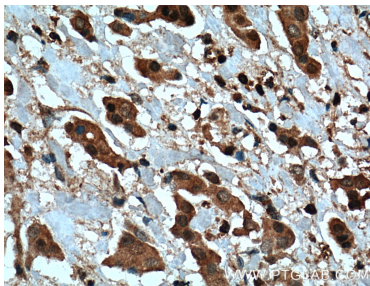
Various lysates were subjected to SDS PAGE followed by western blot with 24546-1-AP (SHP1 antibody) at dilution of 1:5000 incubated at room temperature for 1.5 hours.



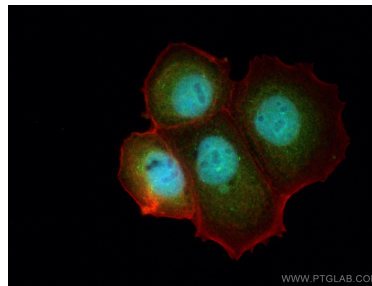
IP Result of anti-SHP1 (IP:24546-1-AP, 4ug; Detection:24546-1-AP 1:600) with Jurkat cells lysate 3600ug.



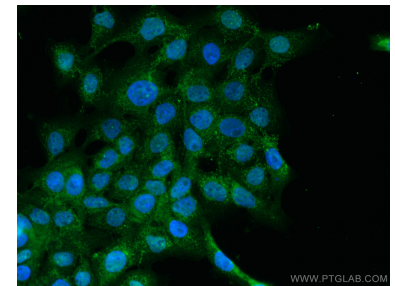
Immunohistochemical analysis of paraffin-embedded human breast cancer tissue slide using 24546-1-AP (SHP1 antibody at dilution of 1:200 (under 10x lens). Heat mediated antigen retrieval with Tris-EDTA buffer (pH 9.0).



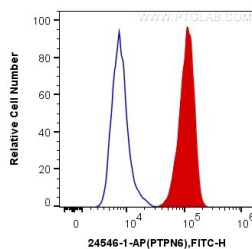
Immunohistochemical analysis of paraffin-embedded human breast cancer tissue slide using 24546-1-AP (SHP1 antibody at dilution of 1:200 (under 40x lens). Heat mediated antigen retrieval with Tris-EDTA buffer (pH 9.0).



Immunofluorescent analysis of (4% PFA) fixed MCF-7 cells using PTPN6 antibody (24546-1-AP) at dilution of 1:200 and Coralite@488-Conjugated AffiniPure Goat Anti-Rabbit IgG(H+L), CL594-Phalloidin (red).



Immunofluorescent analysis of (4% PFA) fixed A431 cells using PTPN6 antibody (24546-1-AP) at dilution of 1:200 and Coralite@488-Conjugated AffiniPure Goat Anti-Rabbit IgG(H+L).



1X10<sup>6</sup> MCF-7 cells were intracellularly stained with 0.2 ug Anti-Human PTPN6 (24546-1-AP) and Coralite@488-Conjugated AffiniPure Goat Anti-Rabbit IgG(H+L) at dilution 1:1000 (red), or 0.2 ug Control Antibody. Cells were fixed and permeabilized with Transcription Factor Staining Buffer Kit (PF00011).