

À des fins de recherche uniquement

Anticorps Polyclonal de lapin anti-SLC37A1



Numéro de catalogue: 24582-1-AP

Informations de base

Numéro de catalogue: 24582-1-AP	Numéro d'acquisition GenBank: BC152997	Méthode de purification: Purification par affinité contre l'antigène
Taille: 150ul, Concentration: 500 µg/ml by Nanodrop and 313 µg/ml by Bradford method using BSA as the standard;	Identification du gène (NCBI): 54020	Dilutions recommandées: WB 1:500-1:1000 IF 1:10-1:100
Hôte: Lapin	Nom complet: solute carrier family 37 (glycerol-3-phosphate transporter), member 1	
Isotype: IgG	MW calculé: 533 aa, 58 kDa	
Immunogen Catalog Number: AG20180	MW observés: 60-66 kDa	

Applications

Applications testées: IF, WB, ELISA	Contrôles positifs: WB : tissu rénal de souris, cellules MCF-7, tissu rénal de rat IF : cellules MCF-7,
Spécificité de l'espèce: Humain, rat, souris	

Informations générales

SLC37A1 (also known as SPX1) is one of the SLC37 family members, localized in the endoplasmic reticulum (ER) membrane (PMID:29719821). The SLC37A1 protein also shares 30% sequence identity to GlpT, suggesting that SLC37A1 could be a mammalian glycerol-3-phosphate transporter. The SLC37A1 gene is widely expressed, with the highest transcript levels in adult kidney, bone marrow, intestine, spleen, and liver (PMID:24745989). In addition, the SLC37A1 protein shares 59% homology to SLC37A2, 35% homology to SLC37A3, and 22% homology to SLC37A4 (PMID:23506893). SLC37A1 is a 533 amino-acid protein with a calculated molecular weight of 58 kDa and observed molecular weight 60-66kDa.

Stockage

Stockage:
Stocker à -20°C. Stable pendant un an après l'expédition.
Tampon de stockage:
PBS avec azoture de sodium à 0,02 % et glycérol à 50 % pH 7,3
L'aliquotage n'est pas nécessaire pour le stockage à -20C

*** Les 20ul contiennent 0,1% de BSA.

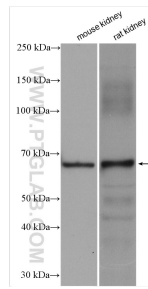
For technical support and original validation data for this product please contact:

T: 1 (888) 4PTGLAB (1-888-478-4522) (toll free in USA), or 1(312) 455-8498 (outside USA)

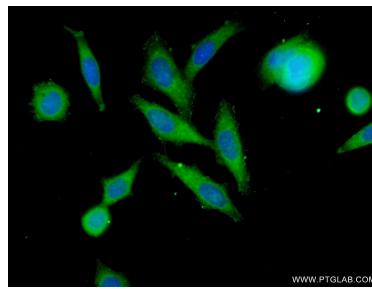
E: proteintech@ptglab.com
W: ptglab.com

This product is exclusively available under Proteintech Group brand and is not available to purchase from any other manufacturer.

Données de validation sélectionnées



mouse kidney tissue were subjected to SDS PAGE followed by western blot with 24582-1-AP (SLC37A1 antibody) at dilution of 1:500 incubated at room temperature for 1.5 hours.



Immunofluorescent analysis of (-20°C Ethanol) fixed MCF-7 cells using 24582-1-AP (SLC37A1 antibody) at dilution of 1:25 and Alexa Fluor 488-conjugated AffiniPure Goat Anti-Rabbit IgG(H+L).