

À des fins de recherche uniquement

Anticorps Polyclonal de lapin anti-TOP2A



Numéro de catalogue: 24641-1-AP

Phare

9 Publications

Informations de base

Numéro de catalogue:

24641-1-AP

Numéro d'acquisition GenBank:

BC140791

Méthode de purification:

Purification par affinité contre l'antigène

Taille:

150ul, Concentration: 1000 µg/ml by Nanodrop and 527 µg/ml by Bradford method using BSA as the standard;

Identification du gène (NCBI):

7153

Dilutions recommandées:

WB 1:2000-1:16000

Hôte:

Lapin

Nom complet:

topoisomerase (DNA) II alpha 170kDa

IP 0.5-4.0 ug for IP and 1:500-1:2000 for WB

Isotype:

IgG

MW calculé

1531 aa, 174 kDa

IHC 1:50-1:500

IF 1:10-1:100

Immunogen Catalog Number:

AG19551

MW observés:

174 kDa

Applications

Applications testées:

IF, IHC, IP, WB, ELISA

Contrôles positifs:

WB : cellules HEK-293T, cellules HeLa, cellules HepG2, cellules MDA-MB-231

Demandes citées:

IF, IHC, IP, WB

IP : cellules HeLa,

Spécificité de l'espèce:

Humain, souris

IHC : tissu de cancer du pancréas humain, tissu de cancer du sein humain

Espèces citées:

Humain, souris

IF : cellules A431,

Remarque-IHC: il est suggéré de démasquer l'antigène avec un tampon de TE buffer pH 9.0; (*) A défaut, 'le démasquage de l'antigène peut être 'effectué avec un tampon citrate pH 6,0.

Informations générales

TOP2A, also named as TOP2, belongs to the type II topoisomerase family. Topoisomerase II makes double-strand breaks. TOP2 control the topological states of DNA by transient breakage and subsequent rejoining of DNA strands. TOP2A may play a role in regulating the period length of ARNTL/BMAL1 transcriptional oscillation. DNA topoisomerase IIa (170 kDa, TOP2a/170) is essential in proliferating cells by resolving DNA topological entanglements during chromosome condensation, replication, and segregation.

Publications notables

Autrice	Pubmed ID	Journal	Application
Jun-Song Liu	25333415	Oncol Rep	
Jingjun Wu	26612655	Chem Biol Interact	WB
Li Wang	33236014	bioRxiv	WB

Stockage

Stockage:

Stocker à -20°C. Stable pendant un an après l'expédition.

Tampon de stockage:

PBS avec azoture de sodium à 0,02 % et glycérol à 50 % pH 7,3

L'aliquotage n'est pas nécessaire pour le stockage à -20C

*** Les 20ul contiennent 0,1% de BSA.

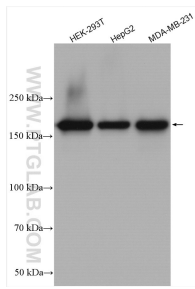
For technical support and original validation data for this product please contact:

T: 1 (888) 4PTGLAB (1-888-478-4522) (toll free in USA), or 1(312) 455-8498 (outside USA)

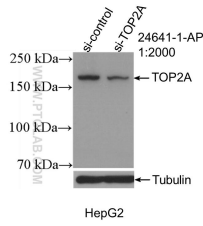
E: proteintech@ptglab.com
W: ptglab.com

This product is exclusively available under Proteintech Group brand and is not available to purchase from any other manufacturer.

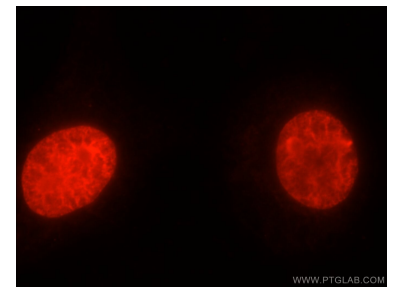
Données de validation sélectionnées



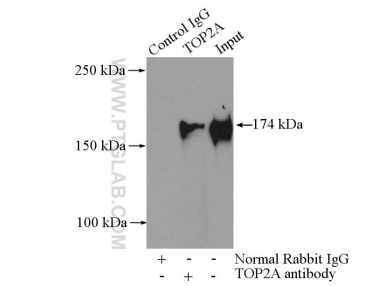
Various lysates were subjected to SDS PAGE followed by western blot with 24641-1-AP (TOP2A antibody) at dilution of 1:8000 incubated at room temperature for 1.5 hours.



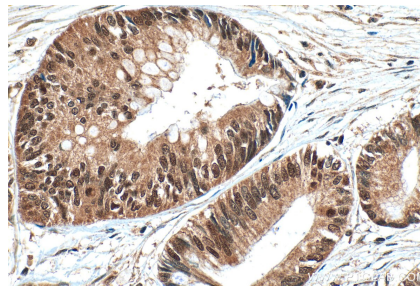
WB result of TOP2A antibody (24641-1-AP; 1:2000; incubated at room temperature for 1.5 hours) with sh-Control and sh-TOP2A transfected HepG2 cells.



Immunofluorescent analysis of A431 cells using 24641-1-AP (TOP2A antibody) at dilution of 1:25 and Rhodamine-Goat anti-Rabbit IgG.



IP Result of anti-TOP2A (IP:24641-1-AP, 4ug; Detection:24641-1-AP 1:1000) with HeLa cells lysate 2000ug.



Immunohistochemical analysis of paraffin-embedded human pancreas cancer tissue slide using 24641-1-AP (TOP2A antibody) at dilution of 1:200 (under 40x lens). Heat mediated antigen retrieval with Tris-EDTA buffer (pH 9.0).