

À des fins de recherche uniquement

# Anticorps Polyclonal de lapin anti-SRA1



Numéro de catalogue: 24655-1-AP

7 Publications

## Informations de base

Numéro de catalogue: 24655-1-AP	Numéro d'acquisition GenBank: BC067895	Méthode de purification: Purification par affinité contre l'antigène
Taille: 150ul , Concentration: 1200 µg/ml by Nanodrop and 513 µg/ml by Bradford method using BSA as the standard;	Identification du gène (NCBI): 10011	Dilutions recommandées: WB 1:2000-1:10000 IHC 1:20-1:200 IF 1:50-1:500
Hôte: Lapin	Nom complet: steroid receptor RNA activator 1	
Isotype: IgG	MW calculé 26 kDa	
Immunogen Catalog Number: AG20082	MW observés: 30 kDa, 33 kDa	

## Applications

Applications testées:  
FC, IF, IHC, WB, ELISA

Demandes citées:  
IHC, WB

Spécificité de l'espèce:  
Humain

Espèces citées:  
Humain, souris

**Remarque-IHC: il est suggéré de démasquer l'antigène avec un tampon de TE buffer pH 9,0; (\*) A défaut, 'le démasquage de l'antigène peut être 'effectué avec un tampon citrate pH 6,0.**

Contrôles positifs:

WB : cellules A2780, cellules HEK-293

IHC : tissu de cancer du sein humain, tissu testiculaire de souris

IF : cellules MCF-7,

## Informations générales

Steroid receptor RNA activator 1 (SRA1), also known as steroid receptor RNA activator protein (SRAP) or SRA, is involved in modulating the activity of multiple transcription factors including the estrogen receptor (ER) (PMID: 20398657). It may play a role in tumorigenesis (PMID: 16152589). The SRA1 gene encodes both SRA1 protein and a non-coding functional RNA that functions as part of a ribonucleoprotein complex activating steroid receptor induced transcription. This polyclonal antibody recognizes endogenous SRA1 isoforms which migrate as a doublet on SDS-PAGE gels (PMID: 12565891; 23907597).

## Publications notables

Autrice	Pubmed ID	Journal	Application
Wenchao Li,	33242606	Free Radic Biol Med	WB
Xin-Nong Chen	33945857	J Ethnopharmacol	WB
Junhan Zhou	35424752	RSC Adv	WB,IHC

## Stockage

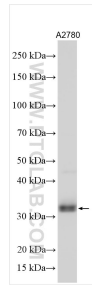
Stockage:  
Stocker à -20°C. Stable pendant un an après l'expédition.  
Tampon de stockage:  
PBS avec azoture de sodium à 0,02 % et glycérol à 50 % pH 7,3  
L'aliquotage n'est pas nécessaire pour le stockage à -20C

\*\*\* Les 20ul contiennent 0,1% de BSA.

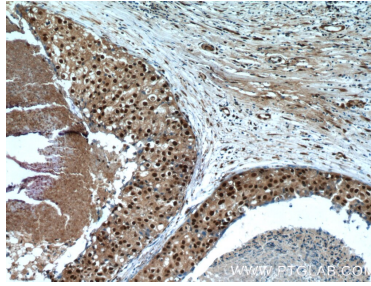
For technical support and original validation data for this product please contact:  
T: 1 (888) 4PTGLAB (1-888-478-4522) (toll free in USA), or 1(312) 455-8498 (outside USA)  
E: proteintech@ptglab.com  
W: ptglab.com

This product is exclusively available under Proteintech Group brand and is not available to purchase from any other manufacturer.

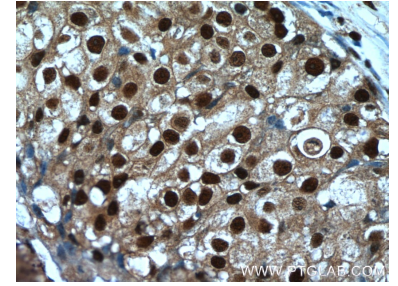
## Données de validation sélectionnées



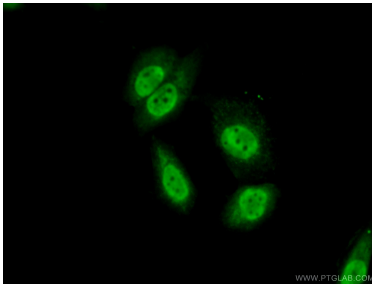
A2780 cells were subjected to SDS PAGE followed by western blot with 24655-1-AP (SRA1 antibody) at dilution of 1:5000 incubated at room temperature for 1.5 hours.



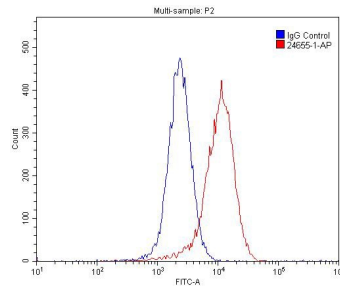
Immunohistochemical analysis of paraffin-embedded human breast cancer tissue slide using 24655-1-AP (SRA1 Antibody) at dilution of 1:50 (under 10x lens).



Immunohistochemical analysis of paraffin-embedded human breast cancer tissue slide using 24655-1-AP (SRA1 Antibody) at dilution of 1:50 (under 40x lens).



Immunofluorescent analysis of (10% Formaldehyde) fixed MCF-7 cells using 24655-1-AP (SRA1 antibody) at dilution of 1:50 and Alexa Fluor 488-conjugated AffiniPure Goat Anti-Rabbit IgG(H+L).



$1 \times 10^6$  MCF-7 cells were stained with 0.2ug SRA1 antibody (24655-1-AP, red) and control antibody (blue). Cells were fixed with 4% PFA and permeabilized with 0.1% Triton X-100. Alexa Fluor 488-conjugated AffiniPure Goat Anti-Rabbit IgG(H+L) with dilution 1:1500.