

À des fins de recherche uniquement

Anticorps Polyclonal de lapin anti-LRSAM1



Numéro de catalogue: 24666-1-AP

Phare

3 Publications

Informations de base

Numéro de catalogue: 24666-1-AP	Numéro d'acquisition GenBank: BC009239	Méthode de purification: Purification par affinité contre l'antigène
Taille: 150ul , Concentration: 1000 µg/ml by Nanodrop and 493 µg/ml by Bradford method using BSA as the standard;	Identification du gène (NCBI): 90678	Dilutions recommandées: WB 1:500-1:2000 IHC 1:20-1:200 IF 1:10-1:100
Hôte: Lapin	Nom complet: leucine rich repeat and sterile alpha motif containing 1	
Isotype: IgG	MW calculé: 723 aa, 84 kDa	
Immunogen Catalog Number: AG20415	MW observés: 84 kDa	

Applications

Applications testées:

IF, IHC, WB, ELISA

Demandes citées:

IF, WB

Spécificité de l'espèce:

Humain, souris

Espèces citées:

Humain, souris

Remarque-IHC: il est suggéré de démasquer l'antigène avec un tampon de TE buffer pH 9,0; (*) A défaut, 'le démasquage de l'antigène peut être effectué avec un tampon citrate pH 6,0.

Contrôles positifs:

WB : cellules Jurkat, cellules HepG2, tissu hépatique de souris

IHC : tissu de muscle squelettique humain,

IF : cellules A431,

Informations générales

LRSAM1 also named as hTAL, RIFLE or Tsg101 associated ligase is a 723 amino acid protein, which contains 6 LRR repeats, 1 Ring-type zinc finger and 1 SAM domain. LRSAM1 is localized in cytoplasm and highly expressed in adult spinal cord motoneurons as well as in fetal spinal cord and muscle tissue. As a E3 ubiquitin protein ligase, LRSAM1 mediates monoubiquitination of TSG101 at multiple sites, leading to inactivate the ability of TSG101 to sort endocytic and exocytic cargos, LRSAM1 gene mutation has an association with Charcot Mairre Tooth disease 2P.

Publications notables

Autrice	Pubmed ID	Journal	Application
Lili Pian	31592239	Cancer Cell Int	WB
Chang Woo Chae	37357416	Autophagy	WB, IF
Qinqin Cui	36738734	Cell	IF

Stockage

Stockage:

Stocker à -20°C. Stable pendant un an après l'expédition.

Tampon de stockage:

PBS avec azoture de sodium à 0,02 % et glycérol à 50 % pH 7,3

L'aliquotage n'est pas nécessaire pour le stockage à -20C

*** Les 20ul contiennent 0,1% de BSA.

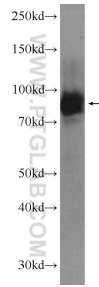
For technical support and original validation data for this product please contact:

T: 1 (888) 4PTGLAB (1-888-478-4522) (toll free in USA), or 1(312) 455-8498 (outside USA)

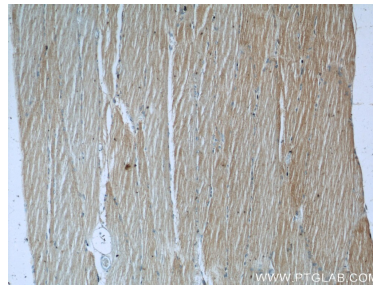
E: proteintech@ptglab.com
W: ptglab.com

This product is exclusively available under Proteintech Group brand and is not available to purchase from any other manufacturer.

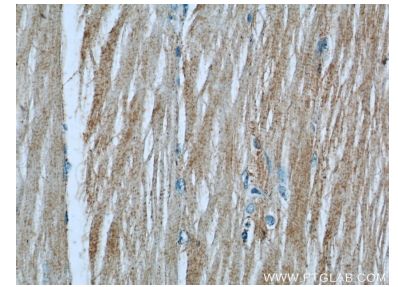
Données de validation sélectionnées



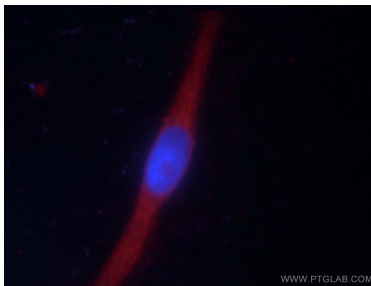
Jurkat cells were subjected to SDS PAGE followed by western blot with 24666-1-AP (LRSAM1 Antibody) at dilution of 1:1000 incubated at room temperature for 1.5 hours.



Immunohistochemical analysis of paraffin-embedded human skeletal muscle slide using 24666-1-AP (LRSAM1 Antibody) at dilution of 1:50.



Immunohistochemical analysis of paraffin-embedded human skeletal muscle slide using 24666-1-AP (LRSAM1 Antibody) at dilution of 1:50.



Immunofluorescent analysis of A431 cells using 24666-1-AP (LRSAM1 antibody) at dilution of 1:25 and Rhodamine-Goat anti-Rabbit IgG.