

À des fins de recherche uniquement

Anticorps Polyclonal de lapin anti-POLR3G



Numéro de catalogue: 24701-1-AP

Informations de base

Numéro de catalogue:

24701-1-AP

Taille:

150ul, Concentration: 1200 µg/ml by Nanodrop and 627 µg/ml by Bradford method using BSA as the standard;

Hôte:

Lapin

Isotype:

IgG

Immunogen Catalog Number:

AG19872

Numéro d'acquisition GenBank:

BC141649

Identification du gène (NCBI):

10622

Nom complet:

polymerase (RNA) III (DNA directed) polypeptide G (32kD)

MW calculé

223 aa, 26 kDa

MW observés:

26-30 kDa

Méthode de purification:

Purification par affinité contre l'antigène

Dilutions recommandées:

WB 1:500-1:2000

IP 0.5-4.0 ug for IP and 1:500-1:1000 for WB

Applications

Applications testées:

IP, WB, ELISA

Spécificité de l'espèce:

Humain

Contrôles positifs:

WB : cellules HeLa, cellules HEK-293, cellules K-562

IP : cellules HeLa,

Informations générales

POLR3G also named as RNA polymerase III subunit C7 is a 223 amino acid protein, which belongs to eukaryotic RPC7 RNA polymerase subunit family. The molecular weight of POLR3G is 26 kDa. POLR3G localizes in the nucleus and is a component of the RNA polymerase III complex, which may be involved either in the recruitment and stabilization of the subcomplex within RNA polymerase III, or in stimulating catalytic functions of other subunits during initiation.

Stockage

Stockage:

Stocker à -20°C. Stable pendant un an après l'expédition.

Tampon de stockage:

PBS avec azoture de sodium à 0,02 % et glycérol à 50 % pH 7,3

L'aliquotage n'est pas nécessaire pour le stockage à -20C

***** Les 20ul contiennent 0,1% de BSA.**

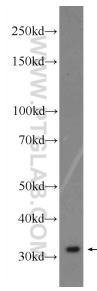
For technical support and original validation data for this product please contact:

T: 1 (888) 4PTGLAB (1-888-478-4522) (toll free in USA), or 1(312) 455-8498 (outside USA)

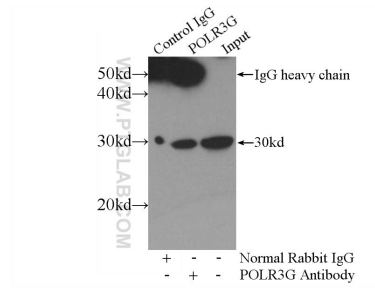
E: proteintech@ptglab.com
W: ptglab.com

This product is exclusively available under Proteintech Group brand and is not available to purchase from any other manufacturer.

Données de validation sélectionnées



HeLa cells were subjected to SDS PAGE followed by western blot with 24701-1-AP (POLR3G Antibody) at dilution of 1:1000 incubated at room temperature for 1.5 hours.



IP Result of anti-POLR3G (IP:24701-1-AP, 3ug; Detection:24701-1-AP 1:500) with HeLa cells lysate 2800ug.