

À des fins de recherche uniquement

Anticorps Polyclonal de lapin anti-FAM172A



Numéro de catalogue: 24732-1-AP

Informations de base

| | | |
|---|---|---|
| Numéro de catalogue: 24732-1-AP | Numéro d'acquisition GenBank: BC020584 | Méthode de purification: Purification par affinité contre l'antigène |
| Taille: 150ul, Concentration: 700 µg/ml by Nanodrop; | Identification du gène (NCBI): 83989 | Dilutions recommandées: WB 1:1000-1:6000 IHC 1:50-1:500 |
| Hôte: Lapin | Nom complet: family with sequence similarity 172, member A | |
| Isotype: IgG | MW calculé: 416 aa, 48 kDa | |
| Immunogen Catalog Number: AG20437 | MW observés: 50-55 kDa | |

Applications

Applications testées:
IHC, WB, ELISA

Spécificité de l'espèce:
Humain, rat, souris

Remarque-IHC: il est suggéré de démasquer l'antigène avec un tampon de TE buffer pH 9,0; (*) À défaut, 'le démasquage de l'antigène peut être effectué avec un tampon citrate pH 6,0.

Contrôles positifs:

WB : tissu de côlon de souris, tissu de côlon de rat
IHC : tissu hépatique humain,

Informations générales

Family with sequence similarity 172 member A (FAM172A), cloned from human aortic tissues, is subsequently observed in human endothelial and vascular smooth muscle cells, and macrophages. As the imbalance of the cell cycle and apoptosis is closely related to the key characteristics of malignant tumors, FAM172A dysregulation is a potential contributing factor in cell transformation. Recently, FAM172A has been reported to take part in the development of several cancers, such as human liver, colorectal and papillary thyroid cancers. Moreover, FAM172A was upregulated by high glucose in a concentration- and time-dependent manner which indicated that FAM172A may be involved in the pathogenesis of diabetic related diseases. FAM172A has 4 isoforms with the molecular mass of 34-36, 43 and 48 kDa. This antibody was detected at 50-55 kDa on SDS-PAGE. (PMID: 31988090, 26637224)

Stockage

Stockage:
Stocker à -20°C. Stable pendant un an après l'expédition.
Tampon de stockage:
PBS avec azotate de sodium à 0,02 % et glycérol à 50 % pH 7,3
L'aliquotage n'est pas nécessaire pour le stockage à -20C

*** Les 20ul contiennent 0,1% de BSA.

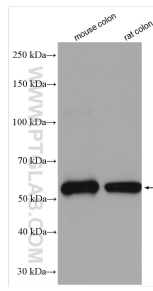
For technical support and original validation data for this product please contact:

T: 1 (888) 4PTGLAB (1-888-478-4522) (toll free in USA), or 1(312) 455-8498 (outside USA)

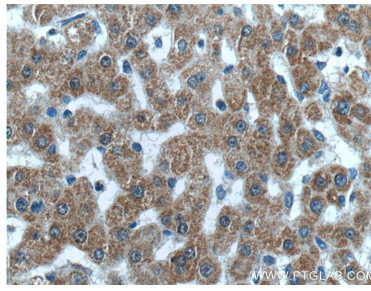
E: proteintech@ptglab.com
W: ptglab.com

This product is exclusively available under Proteintech Group brand and is not available to purchase from any other manufacturer.

Données de validation sélectionnées



Various lysates were subjected to SDS PAGE followed by western blot with 24732-1-AP (FAM172A antibody) at dilution of 1:3000 incubated at room temperature for 1.5 hours.



Immunohistochemical analysis of paraffin-embedded human liver tissue slide using 24732-1-AP (FAM172A Antibody) at dilution of 1:200 (under 40x lens).