

À des fins de recherche uniquement

Anticorps Polyclonal de lapin anti-ACE



Numéro de catalogue: 24743-1-AP

14 Publications

Informations de base

Numéro de catalogue:

24743-1-AP

Taille:

150ul, Concentration: 600 µg/ml by Nanodrop and 360 µg/ml by Bradford method using BSA as the standard;

Hôte:

Lapin

Isotype:

IgG

Immunogen Catalog Number:

AG20654

Numéro d'acquisition GenBank:

BC036375

Identification du gène (NCBI):

1636

Nom complet:

angiotensin I converting enzyme (peptidyl-dipeptidase A) 1

MW calculé

150 kDa

MW observés:

170 kDa

Méthode de purification:

Purification par affinité contre l'antigène

Dilutions recommandées:

WB 1:500-1:2000

IP 0.5-4.0 ug for IP and 1:500-1:2000 for WB

IHC 1:50-1:500

Applications

Applications testées:

IHC, IP, WB, ELISA

Demandes citées:

IF, IHC, WB

Spécificité de l'espèce:

Humain, rat, souris

Espèces citées:

bovin, Humain, rat, souris

Remarque-IHC: il est suggéré de démasquer l'antigène avec un tampon de TE buffer pH 9,0; (*) A défaut, 'le démasquage de l'antigène peut être effectué avec un tampon citrate pH 6,0.

Contrôles positifs:

WB : tissu cardiaque de souris,

IP : tissu cardiaque de souris,

IHC : tissu pulmonaire humain, tissu pulmonaire de souris

Informations générales

ACE (Angiotensin-converting enzyme) is also named as DCP, DCP1 and belongs to the peptidase M2 family. It is involved in catalyzing the conversion of angiotensin I into a physiologically active peptide angiotensin II. ACE also has a glycosidase activity which releases GPI-anchored proteins from the membrane by cleaving the mannose linkage in the GPI moiety. It has 4 isoforms produced by alternative splicing. The full length protein has 15 glycosylation sites and it can show a molecular weight of 170 kDa (PMID:16804085).

Publications notables

Autrice	Pubmed ID	Journal	Application
Boyu Yuan	36306919	Arch Biochem Biophys	WB
Donatella Treppiedi	35712238	Front Endocrinol (Lausanne)	IF
Nan Wu	32121598	Antioxidants (Basel)	WB

Stockage

Stockage:

Stocker à -20°C. Stable pendant un an après l'expédition.

Tampon de stockage:

PBS avec azoture de sodium à 0,02 % et glycérol à 50 % pH 7,3

L'aliquotage n'est pas nécessaire pour le stockage à -20C

*** Les 20ul contiennent 0,1% de BSA.

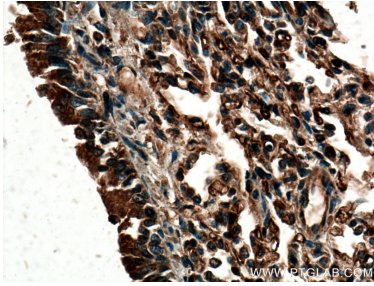
For technical support and original validation data for this product please contact:

T: 1 (888) 4PTGLAB (1-888-478-4522) (toll free in USA), or 1(312) 455-8498 (outside USA)

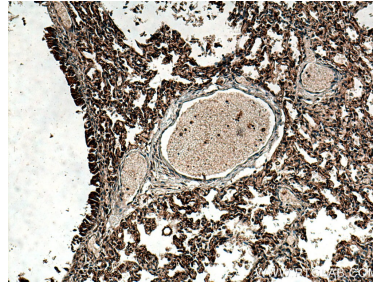
E: proteintech@ptglab.com
W: ptglab.com

This product is exclusively available under Proteintech Group brand and is not available to purchase from any other manufacturer.

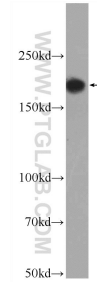
Données de validation sélectionnées



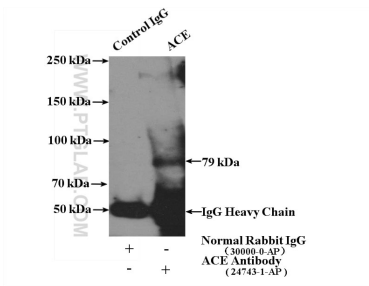
Immunohistochemical analysis of paraffin-embedded human lung tissue slide using 24743-1-AP (ACE antibody) at dilution of 1:200 (under 40x lens). Heat mediated antigen retrieval with Tris-EDTA buffer (pH 9.0).



Immunohistochemical analysis of paraffin-embedded human lung tissue slide using 24743-1-AP (ACE antibody) at dilution of 1:200 (under 10x lens). Heat mediated antigen retrieval with Tris-EDTA buffer (pH 9.0).



mouse heart tissue were subjected to SDS PAGE followed by western blot with 24743-1-AP (ACE Antibody) at dilution of 1:1000 incubated at room temperature for 1.5 hours.



IP Result of anti-ACE (IP:24743-1-AP, 4ug; Detection:24743-1-AP 1:1000) with mouse heart tissue lysate 4000ug.