

À des fins de recherche uniquement

Anticorps Polyclonal de lapin anti-YTHDF2



Numéro de catalogue: 24744-1-AP

Phare

212 Publications

Informations de base

Numéro de catalogue:

24744-1-AP

Taille:

150ul, Concentration: 500 µg/ml by Nanodrop;

Hôte:

Lapin

Isotype:

IgG

Immunogen Catalog Number:

AG5922

Numéro d'acquisition GenBank:

BC002559

Identification du gène (NCBI):

51441

Nom complet:

YTH domain family, member 2

MW calculé

62 kDa

MW observés:

62 kDa

Méthode de purification:

Purification par affinité contre l'antigène

Dilutions recommandées:

WB 1:2000-1:12000

IP 0.5-4.0 ug for IP and 1:500-1:1000 for WB

IF 1:50-1:500

Applications

Applications testées:

IF, IP, WB, ELISA

Demandes citées:

ChIP, CLIP, CoIP, FC, IF, IHC, IP, RIP, WB

Spécificité de l'espèce:

Humain, rat, souris

Espèces citées:

Humain, porc, poulet, rat, singe, souris

Contrôles positifs:

WB : cellules HEK-293, cellules C6, cellules HeLa, cellules Jurkat, cellules MOLT-4, cellules NIH/3T3, cellules Raji

IP : cellules Jurkat,

IF : tissu cérébral de souris, cellules HeLa, cellules U2OS

Informations générales

YTHDF2 also named as CLL associated antigen KW 14 or HGRG8 is a 579 amino acid protein, which contains one YTH domain and exists as two alternatively spliced isoforms. YTHDF2 is expressed in in pancreas, testis and placenta. YTHDF2 may play a role in human longevity.

Publications notables

Autrice	Pubmed ID	Journal	Application
Menghui Xu	36290677	Antioxidants (Basel)	WB
Fanpeng Zhao	34593014	Mol Neurodegener	WB
Kusuma Suphakhong	36183833	J Biol Chem	WB

Stockage

Stockage:

Stocker à -20°C. Stable pendant un an après l'expédition.

Tampon de stockage:

PBS avec azoture de sodium à 0,02 % et glycérol à 50 % pH 7,3

L'aliquotage n'est pas nécessaire pour le stockage à -20C

*** Les 20ul contiennent 0,1% de BSA.

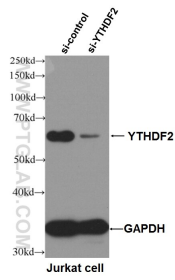
For technical support and original validation data for this product please contact:

T: 1 (888) 4PTGLAB (1-888-478-4522) (toll free in USA), or 1(312) 455-8498 (outside USA)

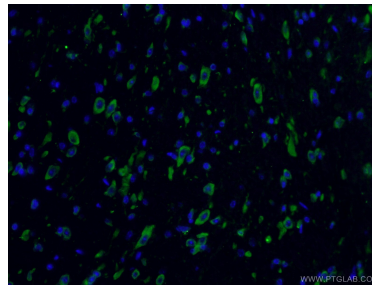
E: proteintech@ptglab.com
W: ptglab.com

This product is exclusively available under Proteintech Group brand and is not available to purchase from any other manufacturer.

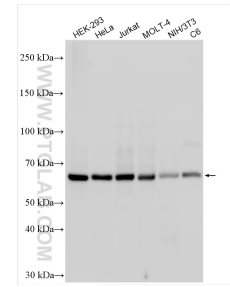
Données de validation sélectionnées



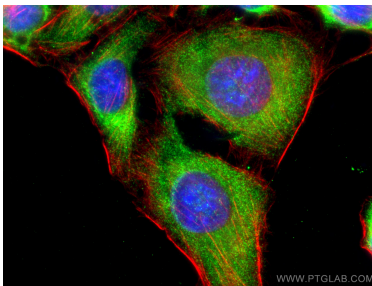
WB result of YTHDF2 antibody (24744-1-AP, 1:4000) with si-control and si-YTHDF2 transfected Jurkat cells.



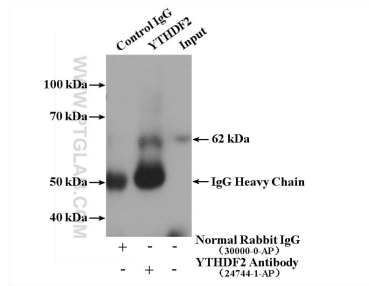
Immunofluorescent analysis of (4% PFA) fixed mouse brain tissue using 24744-1-AP (YTHDF2 antibody) at dilution of 1:50 and Alexa Fluor 488-conjugated AffiniPure Goat Anti-Rabbit IgG(H+L).



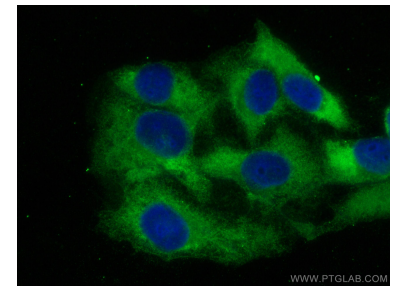
Various lysates were subjected to SDS PAGE followed by western blot with 24744-1-AP (YTHDF2 antibody) at dilution of 1:6000 incubated at room temperature for 1.5 hours.



Immunofluorescent analysis of (-20°C Ethanol) fixed U2OS cells using YTHDF2 antibody (24744-1-AP) at dilution of 1:200 and CoraLite@488-Conjugated AffiniPure Goat Anti-Rabbit IgG(H+L), CL594-Phalloidin (red).



IP Result of anti-YTHDF2 (IP:24744-1-AP, 4ug; Detection:24744-1-AP 1:600) with Jurkat cells lysate 2000ug.



Immunofluorescent analysis of (-20°C Ethanol) fixed U2OS cells using YTHDF2 antibody (24744-1-AP) at dilution of 1:400 and CoraLite@488-Conjugated AffiniPure Goat Anti-Rabbit IgG(H+L).