

À des fins de recherche uniquement

Anticorps Polyclonal de lapin anti-KLHL31



Numéro de catalogue: 24781-1-AP **Phare**

Informations de base

Numéro de catalogue:

24781-1-AP

Taille:

150ul, Concentration: 800 µg/ml by Nanodrop and 407 µg/ml by Bradford method using BSA as the standard;

Hôte:

Lapin

Isotype:

IgG

Immunogen Catalog Number:

AG20462

Numéro d'acquisition GenBank:

BC137267

Identification du gène (NCBI):

401265

Nom complet:

kelch-like 31 (Drosophila)

MW calculé

634 aa, 70 kDa

MW observés:

60-70 kDa

Méthode de purification:

Purification par affinité contre l'antigène

Dilutions recommandées:

WB 1:500-1:2000

IHC 1:50-1:500

IF 1:20-1:200

Applications

Applications testées:

IF, IHC, WB, ELISA

Spécificité de l'espèce:

Humain, souris

Remarque-IHC: il est suggéré de démasquer l'antigène avec un tampon de TE buffer pH 9,0; (*) À défaut, le démasquage de l'antigène peut être effectué avec un tampon citrate pH 6,0.

Contrôles positifs:

WB : tissu embryonnaire de souris, cellules Jurkat

IHC : tissu de muscle squelettique de souris, tissu de cancer du côlon humain

IF : cellules HepG2,

Informations générales

KLHL31 also named as BKLHD6, KBTBD1, or Kelch like protein 31 is a 634 amino acid protein, which contains one 1 BACK domain, one BTB domain and six Kelch repeats. KLHL31 as a transcription repressor in MAPK/JNK signaling pathway to regulate cellular functions. KLHL31 is strongly expressed in skeletal muscle and weakly in heart.

Stockage

Stockage:

Stocker à -20°C. Stable pendant un an après l'expédition.

Tampon de stockage:

PBS avec azoture de sodium à 0,02 % et glycérol à 50 % pH 7,3

L'aliquotage n'est pas nécessaire pour le stockage à -20C

***** Les 20ul contiennent 0,1% de BSA.**

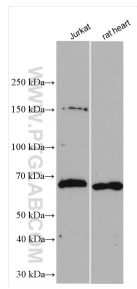
For technical support and original validation data for this product please contact:

T: 1 (888) 4PTGLAB (1-888-478-4522) (toll free in USA), or 1(312) 455-8498 (outside USA)

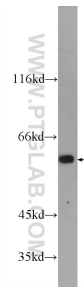
E: proteintech@ptglab.com
W: ptglab.com

This product is exclusively available under Proteintech Group brand and is not available to purchase from any other manufacturer.

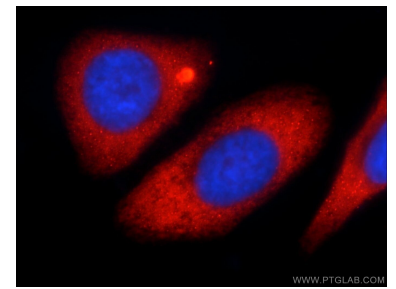
Données de validation sélectionnées



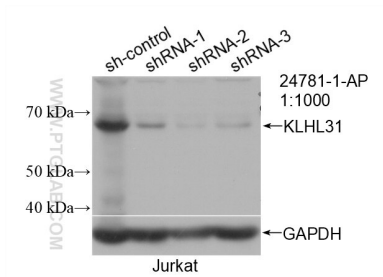
Various lysates were subjected to SDS PAGE followed by western blot with 24781-1-AP (KLHL31 antibody) at dilution of 1:2000 incubated at room temperature for 1.5 hours.



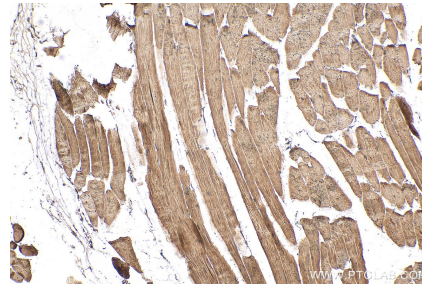
mouse embryo tissue were subjected to SDS PAGE followed by western blot with 24781-1-AP (KLHL31 Antibody) at dilution of 1:1000 incubated at room temperature for 1.5 hours.



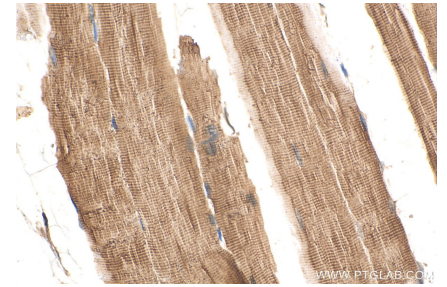
Immunofluorescent analysis of HepG2 cells using 24781-1-AP (KLHL31 antibody) at dilution of 1:50 and Rhodamine-Goat anti-Rabbit IgG.



WB result of KLHL31 antibody (24781-1-AP; 1:1000; incubated at room temperature for 1.5 hours) with sh-Control and sh-KLHL31 transfected Jurkat cells.



Immunohistochemical analysis of paraffin-embedded mouse skeletal muscle tissue slide using 24781-1-AP (KLHL31 antibody) at dilution of 1:200 (under 10x lens). Heat mediated antigen retrieval with Tris-EDTA buffer (pH 9.0).



Immunohistochemical analysis of paraffin-embedded mouse skeletal muscle tissue slide using 24781-1-AP (KLHL31 antibody) at dilution of 1:200 (under 40x lens). Heat mediated antigen retrieval with Tris-EDTA buffer (pH 9.0).