

À des fins de recherche uniquement

Anticorps Polyclonal de lapin anti-C1RL



Numéro de catalogue: 24820-1-AP

Informations de base

Numéro de catalogue: 24820-1-AP	Numéro d'acquisition GenBank: BC156780	Méthode de purification: Purification par affinité contre l'antigène
Taille: 150ul , Concentration: 700 µg/ml by Nanodrop and 353 µg/ml by Bradford method using BSA as the standard;	Identification du gène (NCBI): 51279	Dilutions recommandées: WB 1:500-1:3000
Hôte: Lapin	Nom complet: complement component 1, r subcomponent-like	
Isotype: IgG	MW calculé 487 aa, 53 kDa	
Immunogen Catalog Number: AG20324	MW observés: 70 kDa	

Applications

Applications testées: WB, ELISA	Contrôles positifs: WB : plasma humain,
Spécificité de l'espèce: Humain	

Informations générales

C1r-like serine protease analog protein (CLSPa), also named as C1RL contains a CUB domain and a serine protease domain, possessing characteristic catalytic triad. C1RL is upregulated in glioblastoma (GBM) and has been proved to be a prognostic marker in hepatocellular carcinoma and renal cell cancer (PMID: 32993564). C1RL has a calculated molecular weight of 53 kDa, and this antibody can detect a band at 70 kDa due to possible N-glycosylation (PMID: 15358180).

Stockage

Stockage:
Stocker à -20°C. Stable pendant un an après l'expédition.
Tampon de stockage:
PBS avec azoture de sodium à 0,02 % et glycérol à 50 % pH 7,3
L'aliquotage n'est pas nécessaire pour le stockage à -20C

***** Les 20ul contiennent 0,1% de BSA.**

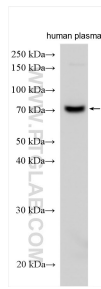
For technical support and original validation data for this product please contact:

T: 1 (888) 4PTGLAB (1-888-478-4522) (toll free in USA), or 1(312) 455-8498 (outside USA)

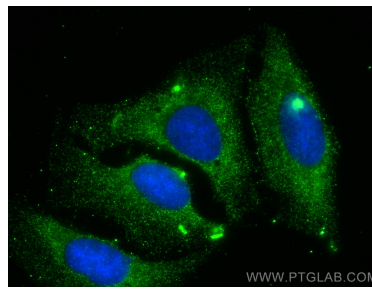
E: proteintech@ptglab.com
W: ptglab.com

This product is exclusively available under Proteintech Group brand and is not available to purchase from any other manufacturer.

Données de validation sélectionnées



Various lysates were subjected to SDS PAGE followed by western blot with 24820-1-AP (C1RL antibody) at dilution of 1:1500 incubated at room temperature for 1.5 hours.



Immunofluorescent analysis of (-20°C Methanol) fixed U2OS cells using C1RL antibody (24820-1-AP) at dilution of 1:400 and CoraLite® 488-Conjugated AffiniPure Goat Anti-Rabbit IgG(H+L).