

À des fins de recherche uniquement

# Anticorps Polyclonal de lapin anti-ATXN2L



Numéro de catalogue: 24822-1-AP

Phare

8 Publications

## Informations de base

Numéro de catalogue:

24822-1-AP

Taille:

150ul, Concentration: 550 µg/ml by Nanodrop;

Hôte:

Lapin

Isotype:

IgG

Immunogen Catalog Number:

AG20581

Numéro d'acquisition GenBank:

BC082760

Identification du gène (NCBI):

11273

Nom complet:

ataxin 2-like

MW calculé

1062 aa, 112 kDa

MW observés:

~140 kDa

Méthode de purification:

Purification par affinité contre l'antigène

Dilutions recommandées:

WB 1:1000-1:8000

IP 0.5-4.0 µg for IP and 1:1000-1:4000 for WB

IHC 1:50-1:500

## Applications

Applications testées:

IHC, IP, WB, ELISA

Demandes citées:

CoIP, IF, WB

Spécificité de l'espèce:

Humain, souris

Espèces citées:

Humain, rat, souris

Contrôles positifs:

WB : cellules Jurkat, cellules HeLa, cellules MKN-45

IP : cellules HeLa,

IHC : tissu d'amygdalite humaine, tissu de cancer de l'estomac humain

**Remarque-IHC: il est suggéré de démasquer l'antigène avec un tampon de TE buffer pH 9,0; (\*) À défaut, le démasquage de l'antigène peut être effectué avec un tampon citrate pH 6,0.**

## Informations générales

ATXN2L is a paralog of Ataxin-2 (ATXN2) but without abnormal polyQ expanded track, which is conserved in most of the ATXNs and drives the pathogenesis of neurodegeneration. It was reported that ATXN2L was widely expressed in immortalized cell lines, and ATXN2L-JAK2 fusion was found in CD4-positive T-cell lymphoma.

## Publications notables

Autrice	Pubmed ID	Journal	Application
Luam E Araya	34553588	ACS Chem Biol	WB
Xiaobao Gong	36218239	Phytother Res	WB
Jana Key	32698485	Int J Mol Sci	WB

## Stockage

Stockage:

Stocker à -20°C. Stable pendant un an après l'expédition.

Tampon de stockage:

PBS avec azoture de sodium à 0,02 % et glycérol à 50 % pH 7,3

L'aliquotage n'est pas nécessaire pour le stockage à -20C

\*\*\* Les 20ul contiennent 0,1% de BSA.

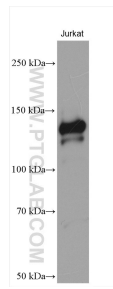
For technical support and original validation data for this product please contact:

T: 1 (888) 4PTGLAB (1-888-478-4522) (toll free in USA), or 1(312) 455-8498 (outside USA)

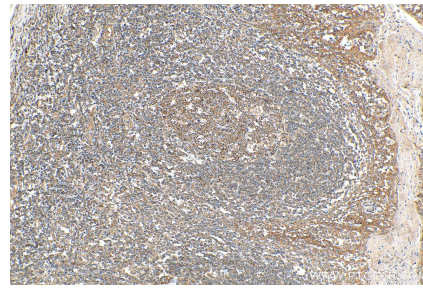
E: proteintech@ptglab.com  
W: ptglab.com

This product is exclusively available under Proteintech Group brand and is not available to purchase from any other manufacturer.

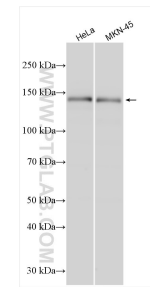
## Données de validation sélectionnées



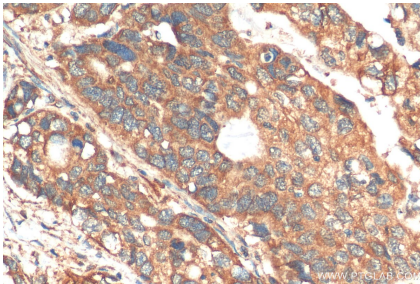
Jurkat cells were subjected to SDS PAGE followed by western blot with 24822-1-AP (ATXN2L antibody) at dilution of 1:4000 incubated at room temperature for 1.5 hours.



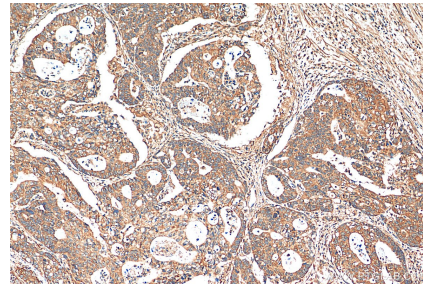
Immunohistochemical analysis of paraffin-embedded human tonsillitis tissue slide using 24822-1-AP (ATXN2L antibody) at dilution of 1:200 (under 10x lens). Heat mediated antigen retrieval with Tris-EDTA buffer (pH 9.0).



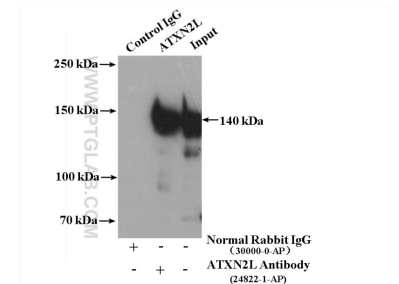
Various lysates were subjected to SDS PAGE followed by western blot with 24822-1-AP (ATXN2L antibody) at dilution of 1:5000 incubated at room temperature for 1.5 hours.



Immunohistochemical analysis of paraffin-embedded human stomach cancer tissue slide using 24822-1-AP (ATXN2L antibody) at dilution of 1:200 (under 40x lens). Heat mediated antigen retrieval with Tris-EDTA buffer (pH 9.0).



Immunohistochemical analysis of paraffin-embedded human stomach cancer tissue slide using 24822-1-AP (ATXN2L antibody) at dilution of 1:200 (under 10x lens). Heat mediated antigen retrieval with Tris-EDTA buffer (pH 9.0).



IP Result of anti-ATXN2L (IP:24822-1-AP, 4ug; Detection:24822-1-AP 1:2000) with HeLa cells lysate 2400ug.