

À des fins de recherche uniquement

# Anticorps Polyclonal de lapin anti-CD20



Numéro de catalogue: 24828-1-AP

4 Publications

## Informations de base

Numéro de catalogue:

24828-1-AP

Taille:

150ul, Concentration: 250 µg/ml by Nanodrop and 253 µg/ml by Bradford method using BSA as the standard;

Hôte:

Lapin

Isotype:

IgG

Immunogen Catalog Number:

AG17309

Numéro d'acquisition GenBank:

BC002807

Identification du gène (NCBI):

931

Nom complet:

membrane-spanning 4-domains, subfamily A, member 1

MW calculé

297 aa, 33 kDa

MW observés:

35 kDa

Méthode de purification:

Purification par affinité contre l'antigène

Dilutions recommandées:

WB 1:1000-1:8000

IP 0.5-4.0 ug for IP and 1:500-1:1000 for WB

IHC 1:500-1:2000

IF 1:50-1:500

## Applications

Applications testées:

FC, IF, IHC, IP, WB, ELISA

Demandes citées:

IHC, WB

Spécificité de l'espèce:

Humain

Espèces citées:

Humain

Contrôles positifs:

WB : cellules Daudi, cellules Raji, cellules Ramos

IP : cellules Raji,

IHC : tissu d'amygdalite humain, tissu de cancer du côlon humain, tissu de cancer du sein humain, tissu de lymphome humain

IF : tissu d'amygdalite humaine, cellules Raji

**Remarque-IHC: il est suggéré de démasquer l'antigène avec un tampon de TE buffer pH 9,0; (\*) A défaut, 'le démasquage de l'antigène peut être 'effectué avec un tampon citrate pH 6,0.**

## Informations générales

CD20 is a 33-37 kDa transmembrane phosphoprotein. CD20 is a B-lymphocyte surface molecule that is widely expressed during B-cell ontogeny, from early pre-B-cell developmental stages until final differentiation into plasma cells. CD20 functions as calcium-permeable cation channel. It is involved in the regulation of B-cell activation and proliferation. CD20 serves as a useful target for antibody-mediated therapeutic depletion of B-cells.

## Publications notables

Autrice	Pubmed ID	Journal	Application
A Zietzer	27770498	Acta Physiol (Oxf)	WB
Sirui Qian	35020842	Clin Exp Immunol	IHC
Chen Su	37629071	Int J Mol Sci	IHC

## Stockage

Stockage:

Stocker à -20°C. Stable pendant un an après l'expédition.

Tampon de stockage:

PBS avec azoture de sodium à 0,02 % et glycérol à 50 % pH 7,3

L'aliquotage n'est pas nécessaire pour le stockage à -20C

\*\*\* Les 20ul contiennent 0,1% de BSA.

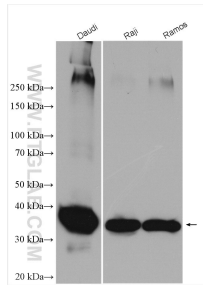
For technical support and original validation data for this product please contact:

T: 1 (888) 4PTGLAB (1-888-478-4522) (toll free in USA), or 1(312) 455-8498 (outside USA)

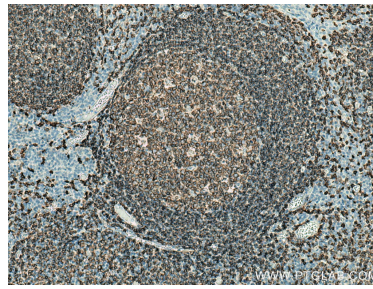
E: proteintech@ptglab.com  
W: ptglab.com

This product is exclusively available under Proteintech Group brand and is not available to purchase from any other manufacturer.

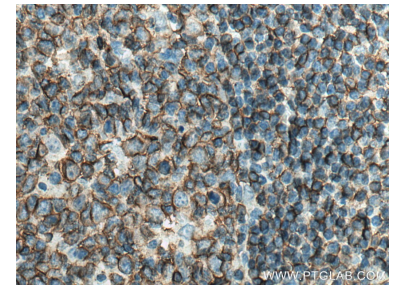
## Données de validation sélectionnées



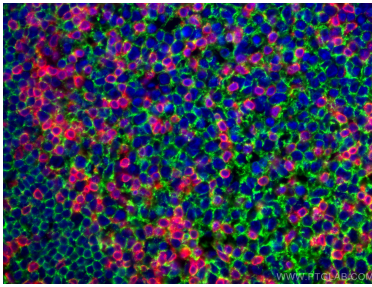
Various lysates were subjected to SDS PAGE followed by western blot with 24828-1-AP (CD20 antibody) at dilution of 1:4000 incubated at room temperature for 1.5 hours.



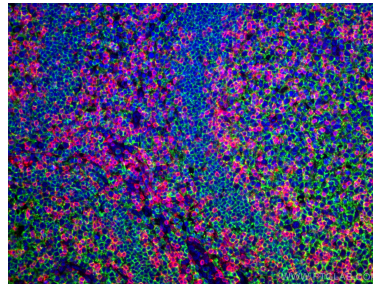
Immunohistochemical analysis of paraffin-embedded human tonsillitis tissue slide using 24828-1-AP (CD20 antibody) at dilution of 1:1000 (under 10x lens). Heat mediated antigen retrieval with Tris-EDTA buffer (pH 9.0).



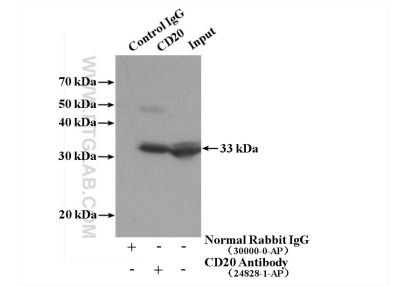
Immunohistochemical analysis of paraffin-embedded human tonsillitis tissue slide using 24828-1-AP (CD20 antibody) at dilution of 1:1000 (under 40x lens). Heat mediated antigen retrieval with Tris-EDTA buffer (pH 9.0).



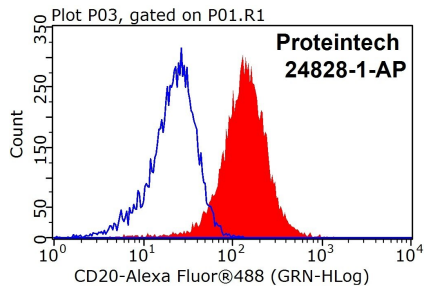
Immunofluorescent analysis of (4% PFA) fixed human tonsillitis tissue using CD20 antibody (24828-1-AP) at dilution of 1:200 and CoraLite@488-Conjugated AffiniPure Goat Anti-Rabbit IgG(H+L), CD3 antibody (60181-1-Ig, Clone: 3F3A1, red).



Immunofluorescent analysis of (4% PFA) fixed human tonsillitis tissue using CD20 antibody (24828-1-AP) at dilution of 1:200 and CoraLite@488-Conjugated AffiniPure Goat Anti-Rabbit IgG(H+L), CD3 antibody (60181-1-Ig, Clone: 3F3A1, red).



IP Result of anti-CD20 (IP:24828-1-AP, 4ug; Detection:24828-1-AP 1:600) with Raji cells lysate 1440ug.



1X10<sup>6</sup> Raji cells were stained with 0.2ug MS4A1, CD20 antibody (24828-1-AP, red) and control antibody (blue). Fixed with 4% PFA blocked with 3% BSA (30 min). Alexa Fluor 488-Goat anti-Rabbit IgG with dilution 1:100.