

À des fins de recherche uniquement

Anticorps Polyclonal de lapin anti-XBP1S-specific



Numéro de catalogue: 24868-1-AP

Phare

53 Publications

Informations de base

Numéro de catalogue: 24868-1-AP	Numéro d'acquisition GenBank: BC000938	Méthode de purification: Purification par affinité contre l'antigène
Taille: 150ul, Concentration: 600 µg/ml by Nanodrop;	Identification du gène (NCBI): 7494	Dilutions recommandées: WB 1:1000-1:6000 IHC 1:50-1:500
Hôte: Lapin	Nom complet: X-box binding protein 1	
Isotype: IgG	MW calculé: 261 aa, 29 kDa	
Immunogen Catalog Number: AG21703	MW observés: 55-65 kDa	

Applications

Applications testées:

FC, IHC, WB, ELISA

Demandes citées:

IF, IHC, WB

Spécificité de l'espèce:

Humain, rat, souris

Espèces citées:

Humain, rat, souris

Contrôles positifs:

WB : cellules HEK-293T, cellules MCF-7, tissu hépatique de rat, tissu hépatique de souris

IHC : tissu de cancer du sein humain, tissu de cancer du côlon humain, tissu de cancer du foie humain, tissu hépatique de souris

Remarque-IHC: il est suggéré de démasquer l'antigène avec un tampon de TE buffer pH 9,0; (*) À défaut, le démasquage de l'antigène peut être effectué avec un tampon citrate pH 6,0.

Informations générales

XBP1, also named as XBP2, belongs to the bZIP family. The X-box-binding protein-1 (XBP1) is a transcriptional regulator of the ER stress response that lies downstream of inositol-requiring enzyme 1 (IRE1α) activation (PMID: 14559994). XBP1 localizes in the nucleus. As a transcription factor, it is essential for hepatocyte growth, the differentiation of plasma cells, the immunoglobulin secretion, and the unfolded protein response. XBP1 has an association with major affective disorder. The unspliced XBP1U isoform is composed of 261 amino acid residues, and the spliced XBP1S isoform is composed of 376 amino acid residues. The calculated molecular weight of protein generated from the unspliced XBP1 isoform XBP1U mRNA is 33 kDa, and protein generated from spliced XBP1 isoform XBP1S mRNA is 54 kDa. This antibody specially recognizes the XBP1S isoform.

Publications notables

Autrice	Pubmed ID	Journal	Application
Guoqing Jing	36171629	J Neuroinflammation	WB
Jing Sun	34650437	Front Pharmacol	WB
Yu Chen	34592660	Cell Calcium	WB

Stockage

Stockage:

Stocker à -20°C. Stable pendant un an après l'expédition.

Tampon de stockage:

PBS avec azoture de sodium à 0,02 % et glycérol à 50 % pH 7,3

L'aliquotage n'est pas nécessaire pour le stockage à -20C

*** Les 20ul contiennent 0,1% de BSA.

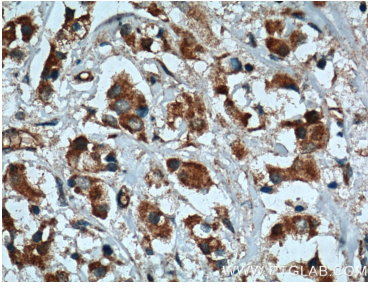
For technical support and original validation data for this product please contact:

T: 1 (888) 4PTGLAB (1-888-478-4522) (toll free in USA), or 1(312) 455-8498 (outside USA)

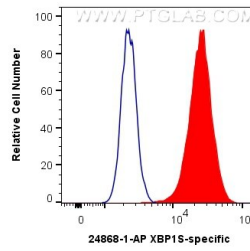
E: proteintech@ptglab.com
W: ptglab.com

This product is exclusively available under Proteintech Group brand and is not available to purchase from any other manufacturer.

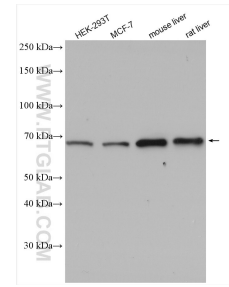
Données de validation sélectionnées



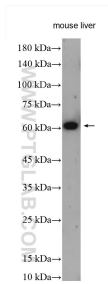
Immunohistochemical analysis of paraffin-embedded human breast cancer tissue slide using 24868-1-AP (XBP1S antibody at dilution of 1:200 (under 40x lens). Heat mediated antigen retrieval with Tris-EDTA buffer (pH 9.0).



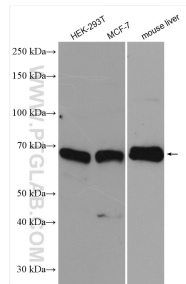
1X10⁶ HepG2 cells were intracellularly stained with 0.4 ug Anti-Human XBP1S-specific (24868-1-AP) and CoraLite®488-Conjugated AffiniPure Goat Anti-Rabbit IgG(H+L) at dilution 1:1000 (red), or 0.4 ug Control Antibody. Cells were fixed with 90% MeOH and permeabilized with Flow Cytometry Perm Buffer (PF00011-C).



Various lysates were subjected to SDS PAGE followed by western blot with 24868-1-AP (XBP1S-specific antibody) at dilution of 1:2000 incubated at room temperature for 1.5 hours.



mouse liver tissue were subjected to SDS PAGE followed by western blot with 24868-1-AP (XBP1S-specific antibody) at dilution of 1:500 incubated at room temperature for 1.5 hours.



Various lysates were subjected to SDS PAGE followed by western blot with 24868-1-AP (XBP1S-specific antibody) at dilution of 1:3000 incubated at room temperature for 1.5 hours.