

À des fins de recherche uniquement

Anticorps Polyclonal de lapin anti-LALBA



Numéro de catalogue: 24871-1-AP

Informations de base

Numéro de catalogue:
24871-1-AP

Taille:
150ul , Concentration: 350 µg/ml by
Nanodrop and 267 µg/ml by Bradford
method using BSA as the standard;

Hôte:
Lapin

Isotype:
IgG

Immunogen Catalog Number:
AG21630

Numéro d'acquisition GenBank:
BC112316

Identification du gène (NCBI):
3906

Nom complet:
lactalbumin, alpha-

MW calculé
142 aa, 16 kDa

MW observés:
13-16 kDa

Méthode de purification:
Purification par affinité contre
l'antigène

Dilutions recommandées:
WB 1:1000-1:4000

Applications

Applications testées:
WB, ELISA

Spécificité de l'espèce:
Humain

Contrôles positifs:

WB : lait humain, salive humaine, salive humaine

Informations générales

LALBA encodes alpha-lactalbumin which is secreted calcium metalloprotein, a principal protein of milk. As a monomer, LALBA strongly binds calcium and zinc ions and may possess bactericidal or antitumor activity. LALBA also could form a complex with the the beta 1,4-galactosyltransferase to produce the enzyme lactose synthase, participating in the biosynthesis of lactose. Moreover, these proteins enable lactose synthase to produce lactose by transferring galactose moieties to glucose. Studies have demonstrated that LALBA-null transgenic mice showed lacking lactose in the milk and inadequate for feeding the pups (PMID:26304038; PMID:12216958).

Stockage

Stockage:

Stocker à -20°C. Stable pendant un an après l'expédition.

Tampon de stockage:

PBS avec azoture de sodium à 0,02 % et glycérol à 50 % pH 7,3

L'aliquotage n'est pas nécessaire pour le stockage à -20C

*** Les 20ul contiennent 0,1% de BSA.

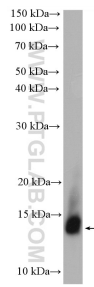
For technical support and original validation data for this product please contact:

T: 1 (888) 4PTGLAB (1-888-478-4522) (toll free
in USA), or 1(312) 455-8498 (outside USA)

E: proteintech@ptglab.com
W: ptglab.com

This product is exclusively available under Proteintech Group brand and is not available to purchase from any other manufacturer.

Données de validation sélectionnées



human saliva were subjected to SDS PAGE followed by western blot with 24871-1-AP (LALBA antibody) at dilution of 1:600 incubated at room temperature for 1.5 hours.



human milk lysates were subjected to SDS PAGE followed by western blot with 24871-1-AP (LALBA antibody) at dilution of 1:2000 incubated at room temperature for 1.5 hours.