

À des fins de recherche uniquement

Anticorps Polyclonal de lapin anti-TREX1



Numéro de catalogue: 24876-1-AP

Phare

2 Publications

Informations de base

Numéro de catalogue:
24876-1-AP

Taille:
150ul, Concentration: 750 µg/ml by Nanodrop and 347 µg/ml by Bradford method using BSA as the standard;

Hôte:
Lapin

Isotype:
IgG

Immunogen Catalog Number:
AG18325

Numéro d'acquisition GenBank:
BC023630

Identification du gène (NCBI):
11277

Nom complet:
three prime repair exonuclease 1

MW calculé
369 aa, 39 kDa

MW observés:
32-39 kDa

Méthode de purification:
Purification par affinité contre l'antigène

Dilutions recommandées:
WB 1:500-1:3000
IP 0.5-4.0 ug for IP and 1:200-1:1000 for WB

Applications

Applications testées:
IP, WB, ELISA

Demandes citées:
WB

Spécificité de l'espèce:
Humain

Espèces citées:
Humain

Contrôles positifs:

WB : cellules HeLa, cellules HepG2

IP : cellules HeLa,

Informations générales

TREX1 (three prime repair exonuclease 1), also known as trophoblast expressed 1, CRV, AGS1, AGS5, DRN3, HERN3 or DNase III, is a member of the exonuclease superfamily and belongs to the TREX family. TREX1 may play a role in DNA repair. TREX1 is expressed in thymus, spleen, liver, brain, heart, small intestine and colon. Mutations or defects in the gene encoding TREX1 have been associated with a variety of diseases, including systemic lupus erythematosus, chilblain lupus (CHBL), Aicardi-Goutieres syndrome type 1 (AGS1) and type 5 (AGS5).

Publications notables

Autrice	Pubmed ID	Journal	Application
Rie Saito	30561700	J Neuropathol Exp Neurol	
Cason R King	36798235	bioRxiv	WB

Stockage

Stockage:

Stocker à -20°C. Stable pendant un an après l'expédition.

Tampon de stockage:

PBS avec azoture de sodium à 0,02 % et glycérol à 50 % pH 7,3

L'aliquotage n'est pas nécessaire pour le stockage à -20C

*** Les 20ul contiennent 0,1% de BSA.

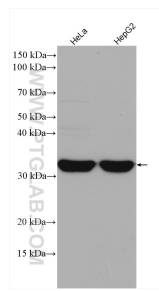
For technical support and original validation data for this product please contact:

T: 1 (888) 4PTGLAB (1-888-478-4522) (toll free in USA), or 1(312) 455-8498 (outside USA)

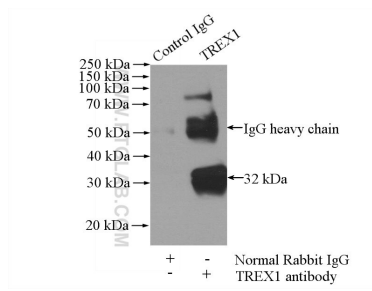
E: proteintech@ptglab.com
W: ptglab.com

This product is exclusively available under Proteintech Group brand and is not available to purchase from any other manufacturer.

Données de validation sélectionnées



Various lysates were subjected to SDS PAGE followed by western blot with 24876-1-AP (TREX1 antibody) at dilution of 1:1500 incubated at room temperature for 1.5 hours.



IP Result of anti-TREX1 (IP:24876-1-AP, 4ug; Detection:24876-1-AP 1:300) with HeLa cells lysate 1200ug.